



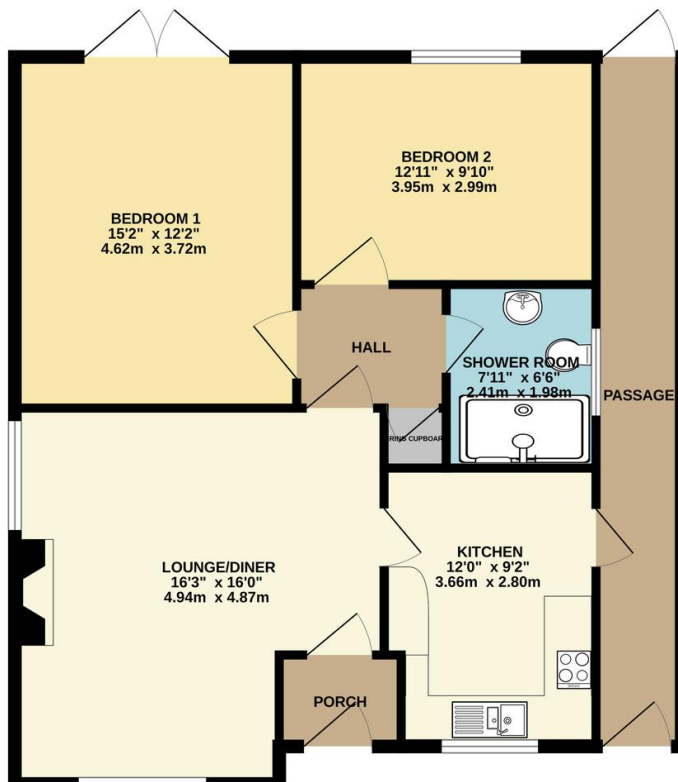
FOR SALE

2 Bed Detached Bungalow in Fir Tree Close, Wigston LE18 1JD
£325,000

Situated within a quiet cul-de-sac in a highly popular part of Wigston, this well-presented two bedroom detached modern bungalow is offered to the market chain free. The property boasts spacious accommodation in neat decorative order throughout, together with beautifully maintained mature gardens, off-road parking, and a garage. Conveniently positioned close to local amenities and transport links, this attractive home is ideal for those seeking peaceful single-storey living in a desirable residential location. Contact Phillips George to arrange your viewing.



GROUND FLOOR
871 sq.ft. (80.9 sq.m.) approx.



TOTAL FLOOR AREA : 871 sq.ft. (80.9 sq.m.) approx.
Whilst every attempt has been made to ensure the accuracy of the floorplan contained here, measurements of doors, windows, rooms and any other items are approximate and no responsibility is taken for any error.

EPC Ordered

- Detached Modern Bungalow
- Quiet Cul-De-Sac Location
- Offered To The Market Chain Free
- Highly Popular Area Of Wigston
- Two Well-Proportioned Bedrooms
- Spacious Lounge Diner
- Neat Decorative Order Throughout
- Mature Front And Rear Gardens

Agents Note: Whilst every care has been taken to prepare these sales particulars, they are for guidance purposes only. All measurements are approximate are for general guidance purposes only and whilst every care has been taken to ensure their accuracy, they should not be relied upon and potential buyers are advised to recheck the measurements.

