



**Connells**

Milton Road  
Harrow



### Property Description

Shared Ownership Homes in Harrow  
Introducing a BRAND-NEW COLLECTION of 24 stylish one and two-bedroom apartments on Milton Road, Harrow available through SHARED OWNERSHIP. This is an ideal opportunity for FIRST-TIME BUYERS to step onto the property ladder in a vibrant North West London neighbourhood.

These superb new homes at Milton Road have been designed for a modern lifestyle offering an open plan living space and stylish kitchen making it perfect for entertaining or relaxing. The bathrooms have been finished with high-end fixtures and fittings that add a touch of luxury to everyday living and the apartments also come with underfloor heating, ensuring a comfortable living space.

Each apartment comes with a private balcony providing a space to enjoy fresh air and outdoor space. The development also has a communal garden that will be beautifully landscaped providing a peaceful area for residents to enjoy with family and friends.

Milton Road is a great opportunity for those looking to get on the property ladder. With a range of shared ownership options available from as little as 10%, it's an affordable way to own a home in this desirable development. Price advertised is representative of a 25% share.

If you're interested in registering for these apartments and becoming part of this new community, please contact us today.

### Milton Road Details:

#### Kitchen

Modern kitchen gloss units with a 'stone effect' laminate worktop with glass splashback along with pelmet lighting  
BEKO ceramic hob and electric oven

BEKO extractor cooker hood  
BEKO integrated Fridge Freezer 70/30 Split  
BEKO integrated dishwasher  
Integrated kitchen bin  
Washing machine (hallway cupboard)

#### Bathroom

Contemporary stylish part tiled bathroom  
Ideal Standard sanitaryware and fittings  
White bath with chrome mixer tap, wall mounted shower and glass bath screen  
Back to wall WC  
Polished chrome ladder towel rail  
Ceramic floor and wall tiling  
Mirrored bathroom cabinet

#### Interior Finishes

Grey Amtico vinyl flooring to bedrooms, hallway, living, kitchen area & bathroom  
Contemporary white internal doors with polished chrome door furniture  
Underfloor heating throughout apartments (except bathroom)  
Triple glazed windows  
Generous Storage provision  
Vent - Axia NVHR ventilation system  
Sprinklers system to flat

#### External And Communal Areas

Private Balcony  
Private audio & video entry to all apartments  
Smoke & heat detectors

Bin and recycling zone  
Secure bicycle storage  
Fob access  
Landscape communal garden

## For Peace Of Mind

Ten year LABC new build warranty  
990 year lease

## Location

Milton Road is perfectly positioned in the heart of Harrow with everything you need on your doorstep. Harrow & Wealdstone Station is just a 5-minute walk away, offering excellent connectivity via the Bakerloo Line, London Overground, and National Rail services. This location ensures excellent connectivity to central London and beyond.

St George's Shopping Centre and St Ann's Shopping Centre are both just a 7-minute walk away, offering high-street fashion, electronics, home goods, supermarkets, and a Vue cinema.

The area is full of vibrant local cafés, bakeries, and a range of international cuisines, with popular chains like Nando's, Wagamama, Starbucks, and Pret A Manger nearby.

Whether you're grabbing a quick bite to eat, meeting friends for a coffee, popping to the gym or enjoying an evening out, there is plenty to choose from.

Everyday essentials are easily accessible, with a Tesco Superstore located at Station Road, just minutes away, offering a wide selection of groceries and household goods.

## Superb Transport Links

- London Euston - 13 minutes via National Rail from Harrow & Wealdstone  
- MShepherd's Bush (Westfield London) - approx. 20 minutes via London Overground

- Clapham Junction - direct Overground link with connections to Gatwick Airport and the South Coast  
- Harrow-on-the-Hill Station - Metropolitan and Chiltern Line services for fast access to London Marylebone  
- Wembley Park - easily accessible for entertainment, sports, shopping, and socialising  
- Local bus routes: 140, 182, 258, and H9 - connecting to Harrow Town Centre, Wembley, Northolt, and Heathrow Airport

## Local Schools And Education

Families will appreciate the proximity to a number of excellent schools and nurseries:

- Marlborough Primary School - 300m (Ofsted "Good")  
- St Jerome Church of England Bilingual School - 600m (Ofsted "Good")  
- Norbury School - within walking distance (Ofsted "Good")  
- Sacred Heart Language College - girls' secondary school nearby  
- Salvatorian Roman Catholic College - boys' secondary school, approx. 1.1 km away  
- Several local nurseries and early years centres are also within easy reach

## Parks And Green Spaces

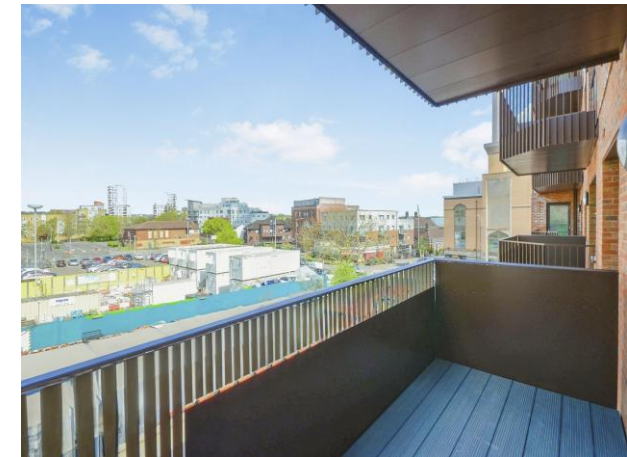
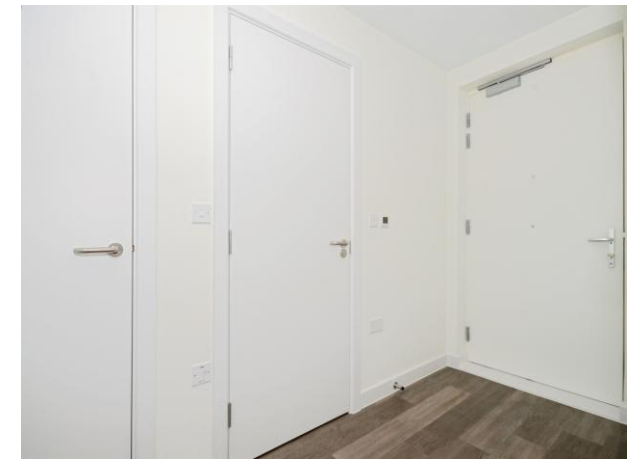
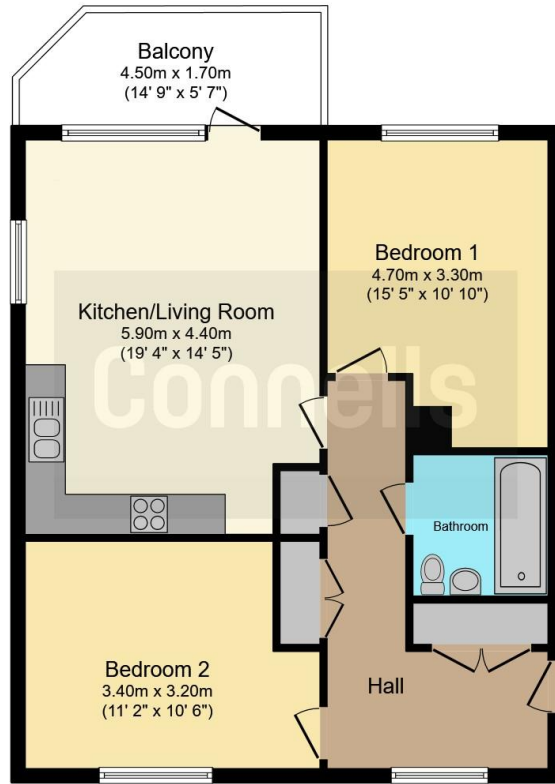
Milton Road is close to several beautiful parks and outdoor areas, ideal for relaxation, exercise, or family time:

- Headstone Manor Park - open spaces, museum, walking trails, and playgrounds  
- Harrow Recreation Ground - sports pitches, play areas, and open lawns  
- Additional local parks offer further space for leisure and social activities

## Places Of Worship

Milton Road is surrounded by a range of places of worship catering to a diverse local





This floor plan is for illustrative purposes only. It is not drawn to scale. Any measurements, floor areas (including any total floor area), openings and orientation are approximate. No details are guaranteed, they cannot be relied upon for any purpose and they do not form part of any agreement. No liability is taken for any error, omission or misstatement. A party must rely upon its own inspection(s). Powered by [www.focalagent.com](http://www.focalagent.com)

To view this property please contact Connells on

**T 020 8427 4321**  
**E [harrow@connells.co.uk](mailto:harrow@connells.co.uk)**

182 Station Road  
HARROW HA1 2RH

EPC Rating:  
Exempt

Service Charge: Ask  
Agent

Ground Rent:  
Ask Agent

Tenure: Leasehold

**view this property online [connells.co.uk/Property/HRW312916](http://connells.co.uk/Property/HRW312916)**

This is a Leasehold property. We are awaiting further details about the Term of the lease. For further information please contact the branch. Please note additional fees could be incurred for items such as Leasehold packs.



1. MONEY LAUNDERING REGULATIONS Intending purchasers will be asked to produce identification documentation at a later stage and we would ask for your co-operation in order that there will be no delay in agreeing the sale. 2. These particulars do not constitute part or all of an offer or contract. 3. The measurements indicated are supplied for guidance only and as such must be considered incorrect. Potential buyers are advised to recheck measurements before committing to any expense. 4. We have not tested any apparatus, equipment, fixtures, fittings or services and it is in the buyers interest to check the working condition of any appliances.

Connells Residential is registered in England and Wales under company number 1489613, Registered Office is Cumbria House, 16-20 Hockliffe Street, Leighton Buzzard, Bedfordshire, LU7 1GN. VAT Registration Number is 500 2481 05.

**See all our properties at [www.connells.co.uk](http://www.connells.co.uk) | [www.rightmove.co.uk](http://www.rightmove.co.uk) | [www.zoopla.co.uk](http://www.zoopla.co.uk)**

Property Ref: HRW312916 - 0002