

Fletcher & Company

35 Trent Avenue, Willington, DE65 6DN

Offers Over £380,000

Freehold



- Superbly Appointed Throughout
- Spacious & Well Proportioned
- Entrance Hall & Well-Appointed Bathroom
- Large Lounge
- Separate Open Plan Dining Kitchen
- Three Bedrooms, Principal with En-Suite Shower Room
- Most Useful Converted Attic Room/Study
- Gated Driveway & Attached Garage
- Private Lawned Rear Garden with Feature Patio
- Viewing Highly Recommended





Summary

A most impressive, spacious, extended, three bedroom, detached bungalow occupying an impressive plot in the sought after village of Willington.

This is a particularly impressive, extended detached bungalow occupying a quiet cul-de-sac location in Willington. The property has been completely remodelled by the current vendors to now provide extremely well-appointed living accommodation, ideal for a range of discerning purchasers.

The property is double glazed and gas central heated with spacious entrance hall, large living room with bifold doors garden, open plan dining kitchen again with bifold doors to rear garden, principal bedroom with en-suite shower room, two further bedrooms and a well-appointed principal bathroom. The property has the additional benefit of a converted attic room/study.

Outside, the property occupies a private plot set behind remote controlled gates leading to an extensive driveway providing off-road parking for multiple vehicles and access to an attached garage. To the rear of the property is an extremely private garden garden featuring lawn and patio area.

F&C

The Location

Willington is a very popular South Derbyshire village noted for its pleasant position close to the Trent and Mersey canal and open countryside. The village itself benefits from a highly regarded primary school, train station, selection of shops, cafes, pubs and restaurants. There is easy access to neighbouring Repton with a further range of amenities. Willington is highly convenient for road networks being close to the A50 and A38 as well as major employers in the area.

Accommodation

Entrance Hall

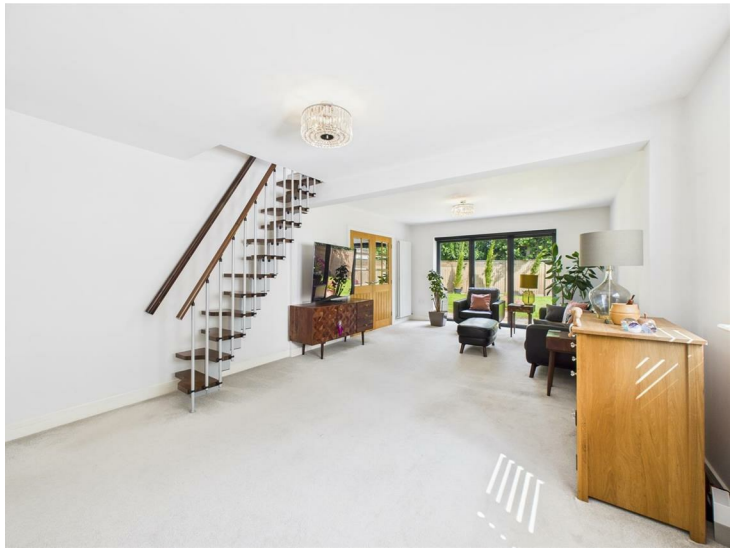
16'7" x 3'10" (5.06 x 1.17)

A panelled and glazed entrance door provides access to a good sized hallway with central heating radiator, recessed ceiling spotlighting, useful storage cupboard and panelled and glazed door to very spacious lounge.

Spacious Lounge

24'1" x 12'11" (7.35 x 3.94)

Having two central heating radiators, TV aerial point, double glazed window to side with bespoke shutters, impressive double glazed bifold doors to garden, staircase to most useful converted attic room/office and twin panelled and multi-paned doors to dining kitchen.



Open Plan Dining Kitchen
19'10" x 12'2" (6.06 x 3.73)



Dining Area

Comprising central heating radiator and double glazed bifold doors to garde.



Fitted Kitchen

Comprising granite effect preparation surfaces with matching upstands extending to breakfast bar, inset stainless steel sink unit with mixer tap, fitted base cupboards and drawers, further wall mounted cupboards with underlighting, inset induction hob with splashback and extractor hood over, built-in oven and microwave, integrated dishwasher, appliance space suitable for freestanding American style fridge freezer, recessed ceiling spotlighting and double glazed window to side with bespoke shutters.



Bedroom One

12'2" x 11'0" (3.72 x 3.37)

With stylish floor to ceiling central heating radiator, double glazed bow bay window with bespoke shutters and door to en-suite shower room.



En-Suite Shower Room

9'2" x 2'11" (2.80 x 0.89)

Appointed with a low flush WC, vanity unit with wash handbasin and storage beneath, shower cubicle, chrome towel radiator, recessed ceiling spotlighting and double glazed window to side.



Bedroom Two

9'11" x 8'9" (3.03 x 2.69)

Having a central heating radiator and double glazed window to front with bespoke shutters.



Bedroom Three

8'9" x 8'9" (2.69 x 2.67)

With central heating radiator and double glazed window to side with bespoke shutters.

Bathroom

9'0" x 6'5" (2.76 x 1.96)

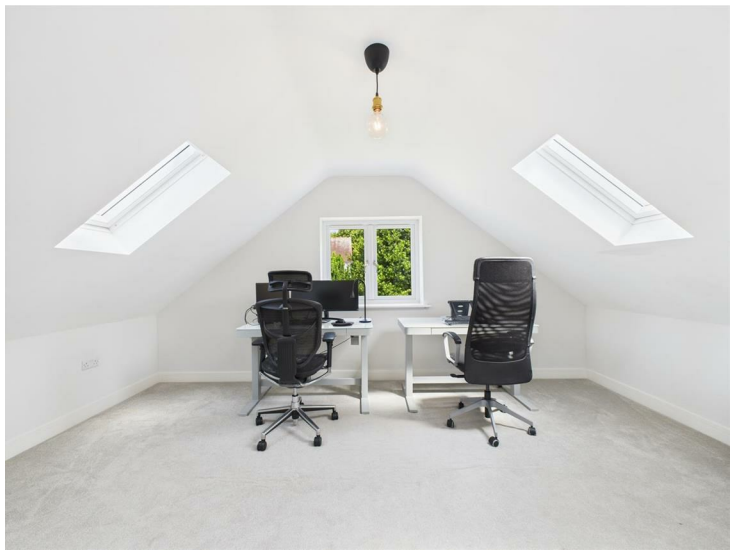
Superbly appointed with a white suite comprising low flush WC, vanity unit with wash handbasin, tiled surrounds and drawers beneath, panelled bath, separate shower cubicle, chrome towel radiator, recessed ceiling spotlighting and double glazed window to side.



First Floor Accommodation

16'2" x 12'9" (4.93 x 3.91)

To the first floor, accessed via a staircase from the lounge, is the most useful converted attic space ideal for use as a study. Having a sealed unit double glazed Velux window to either side elevations and double glazed window overlooking garden.



Outside

The property is tucked away at the end of Trent Avenue on a private plot accessed via remote control gates which lead to an extensive driveway providing ample off-road parking and access to an attached garage. The garden is a true feature of the sale with a high degree of privacy with extensive stone patio/terrace, good size lawn, wood edged border containing plants and shrubs, attractive timber fencing with decorative trellis work, mixed hedging, ornamental lighting, cold water outdoor host tap and access to the front of the property via a gate to the side.

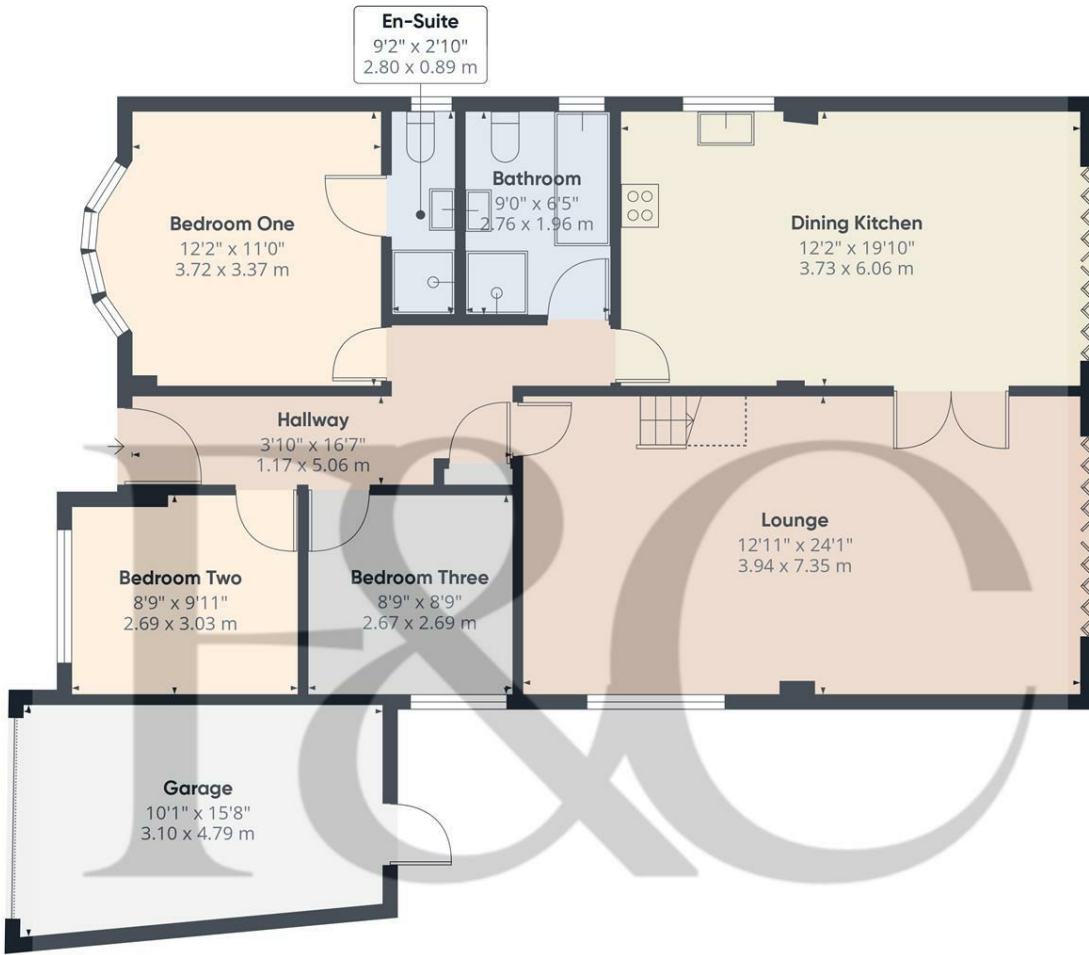


Garage

15'8" x 10'2" (4.79 x 3.10)

With rear pedestrian door and housing the gas fired boiler.

Council Tax Band C



Floor 0

Approximate total area⁽¹⁾

1209 ft²
112.3 m²

Reduced headroom

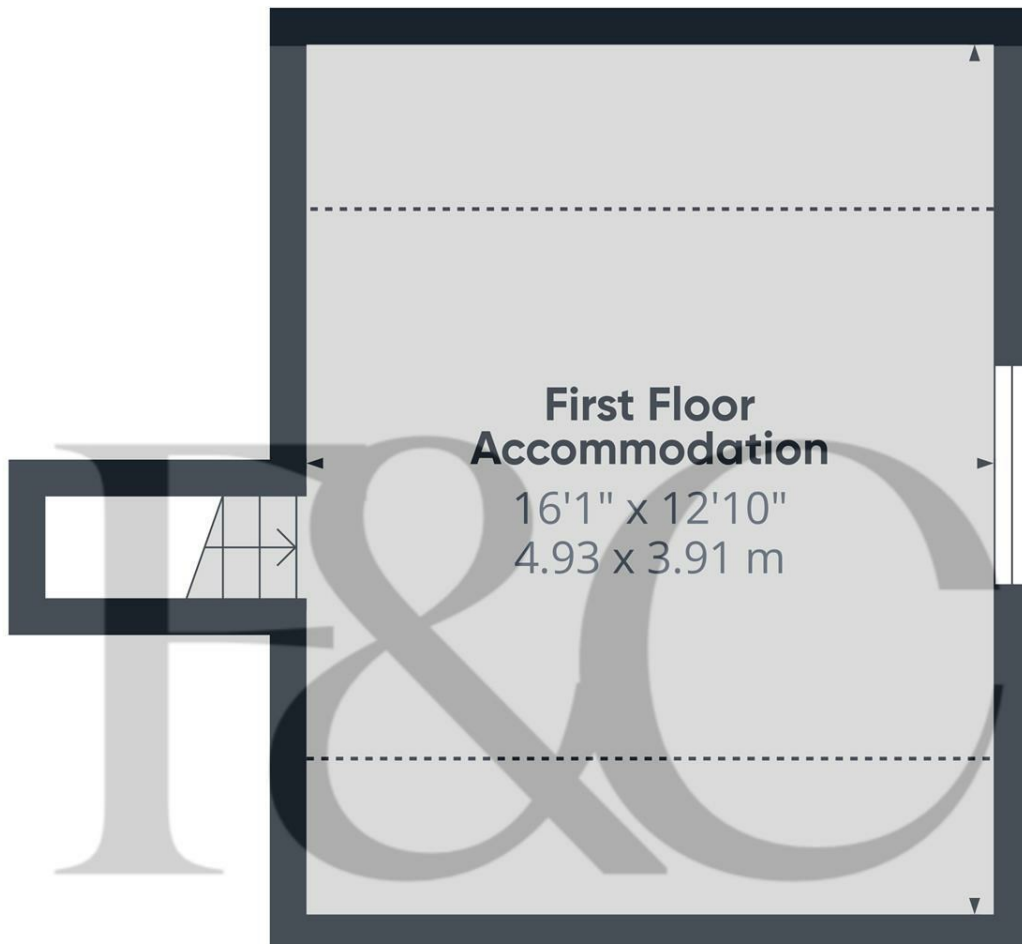
7 ft²
0.7 m²

(1) Excluding balconies and terraces

Reduced headroom
----- Below 5 ft/1.5 m

Calculations reference the RICS IPMS 3C standard. Measurements are approximate and not to scale. This floor plan is intended for illustration only.

GIRAFFE360



Floor 1

Approximate total area⁽¹⁾

207 ft²
19.2 m²

Reduced headroom

73 ft²
6.8 m²

(1) Excluding balconies and terraces

Reduced headroom
----- Below 5 ft/1.5 m

Calculations reference the RICS IPMS 3C standard. Measurements are approximate and not to scale. This floor plan is intended for illustration only.

GIRAFFE360



Duffield Office

Duffield House
Town Street
Duffield
Derbyshire
DE56 4GD

01332 843390
duffield@fletcherandcompany.co.uk

Derby Office

15 Melbourne Court
Millennium Way
Pride Park
Derby
DE24 8LZ

01332 300558
derby@fletcherandcompany.co.uk

Willington Office

3 The Boardwalk
Mercia Marina
Findern Lane
Willington
Derbyshire
DE65 6DW

01283 241500
willington@fletcherandcompany.co.uk

35 Trent Avenue
Willington
DE65 6DN

Council Tax Band: C
Tenure: Freehold



Energy Efficiency Rating

	Current	Potential
Very energy efficient - lower running costs		
(92 plus) A		
(81-91) B		
(69-80) C		79
(55-68) D	68	
(39-54) E		
(21-38) F		
(1-20) G		
Not energy efficient - higher running costs		
England & Wales	EU Directive 2002/91/EC	