



36 George Street, Skipton, BD23 2PN

Asking Price £199,950

- CHARMING TWO BED TERRACE
- PRIVATE ENCLOSED REAR YARD
- CONTEMPORARY FITTED KITCHEN
- STYLISH LIVING ROOM
- CHAIN FREE
- ADDITIONAL LOFT ROOM
- MOVE IN READY
- SPACIOUS HOUSE BATHROOM
- CLOSE TO AMENITIES
- VIEWING A MUST

36 George Street, Skipton BD23 2PN

Beautifully renovated and impeccably presented throughout, this charming, two bedroom, stone-built terraced home offers surprisingly spacious accommodation arranged over three floors, seamlessly blending character, contemporary style and everyday practicality in a highly desirable location just moments from Skipton town centre.



Council Tax Band: A



PROPERTY DETAILS

Beautifully renovated and impeccably presented throughout, this charming, two bedroom, stone-built terraced home offers surprisingly spacious accommodation arranged over three floors, seamlessly blending character, contemporary style and everyday practicality in a highly desirable location just moments from Skipton town centre.

Significantly enhanced by the current owners, the property benefits from gas central heating, UPVC double glazing and stylish modern décor throughout, creating a turnkey home ready to be enjoyed from day one.

The accommodation opens with an entrance vestibule leading into a welcoming living room, featuring a striking focal wall that creates a warm and inviting atmosphere. To the rear, the contemporary kitchen has been thoughtfully designed with a range of modern units and ample space for cooking, dining and everyday living.

On the first floor, a landing with useful built-in storage provides access to two generous double bedrooms and a spacious, beautifully appointed house bathroom. A staircase from the second bedroom leads to a versatile loft room with Velux windows, currently used as an additional bedroom, offering excellent flexibility as a guest room, home office or hobby space.

Externally, the property enjoys a private enclosed rear yard, providing an attractive and low-maintenance outdoor area ideal for relaxing or entertaining.

Occupying a sought-after position on the upper section of George Street, the property is within easy walking distance of Skipton's vibrant town centre. Widely regarded as one of the most desirable places to live in the UK, Skipton boasts an exceptional range of amenities, including highly regarded schools, independent shops, cafés, bars and restaurants, alongside its bustling market, historic castle and the picturesque Leeds and Liverpool Canal. Excellent rail connections provide regular services to Leeds and Bradford, while the breathtaking landscapes of the Yorkshire Dales National Park are just a short drive away.

Offering broad appeal to first-time buyers, investors, downsizers and anyone seeking a stylish, low-maintenance home in a convenient and thriving location, this outstanding property must be viewed to be fully appreciated.



Viewings

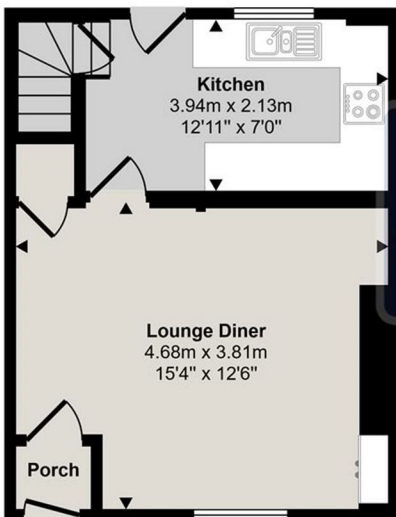
Viewings by arrangement only. Call 01756 753341 to make an appointment.

EPC Rating:

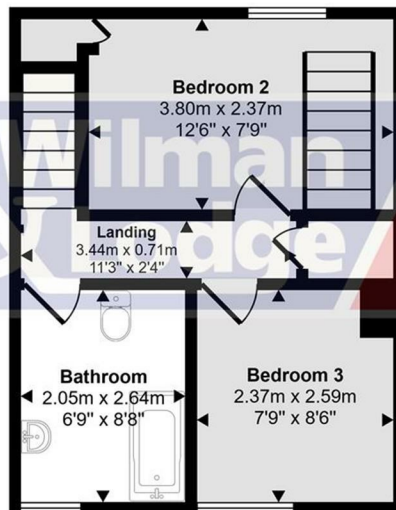
C

Energy Efficiency Rating		Current	Potential
Very energy efficient - lower running costs			
(92 plus) A			
(81-91) B			
(69-80) C		74	78
(55-68) D			
(39-54) E			
(21-38) F			
(1-20) G			
Not energy efficient - higher running costs			
England & Wales		EU Directive 2002/91/EC	

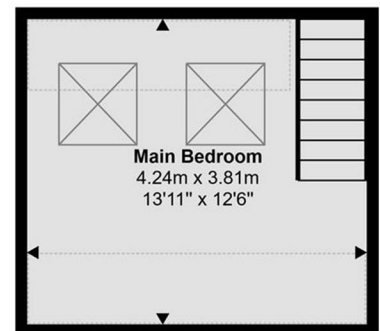
Approx Gross Internal Area
72 sq m / 777 sq ft



Ground Floor
Approx 28 sq m / 305 sq ft



First Floor
Approx 28 sq m / 298 sq ft



Second Floor
Approx 16 sq m / 174 sq ft

Denotes head height below 1.5m

This floorplan is only for illustrative purposes and is not to scale. Measurements of rooms, doors, windows, and any items are approximate and no responsibility is taken for any error, omission or mis-statement. Icons of items such as bathroom suites are representations only and may not look like the real items. Made with Made Snappy 360.