



ESTATE AGENTS

www.cwestateagents.co.uk



## 25 Drillfield Road, Northwich CW9 5HU

Offers in excess of £230,000

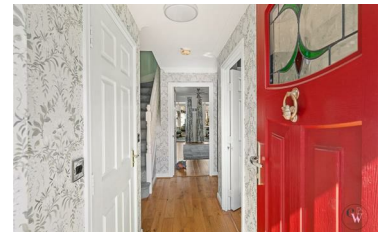


A beautifully presented, three-storey townhouse offered to the market with no onward chain, ideally located on the ever-popular Drillfield Road in Northwich.

The property enjoys a highly convenient position close to a wide range of local amenities, including shops, supermarkets, cafés and leisure facilities, all within easy reach. Well-regarded primary and secondary schools are nearby, making this an excellent choice for families. Northwich town centre, with its thriving bars, restaurants and marina, is just a short distance away, while excellent transport links provide straightforward access to the A556, A49 and M6 motorway network, along with regular rail services to Chester, Manchester and beyond.

Externally, the home is immaculately maintained and offers off-road parking to the front, with a private, low-maintenance garden to the rear—perfect for

- A beautifully presented, three-storey townhouse
- Convenient position close to the town centre
- Off road parking and enclosed garden
- Offered to the market with no onward chain
- Modern kitchen and bathrooms throughout
- Conservatory



01606 514 152
 info@cwestateagents.co.uk  
 @CWestateAgent
 @CWestateAgents