

City Road, London EC1V
£1,250,000 Leasehold







Description

Situated on the 35th floor, this generously proportioned two-bedroom residence offers approximately 985 square feet of sophisticated living space, furnished to an exceptional standard throughout. The apartment features an expansive open-plan living and dining area seamlessly connected to a fully integrated kitchen, complemented by a wraparound outdoor space comprising a large balcony and additional terrace accessible from all rooms.

Spectacular south and west-facing vistas encompass the City skyline, London Eye, and the western London panorama, creating an impressive backdrop to daily life. The residence is completed with two luxury bathrooms, guest cloakroom, ample integrated storage, and the added convenience of secure underground parking, delivering both style and practical functionality in one of the capital's most sought-after developments.

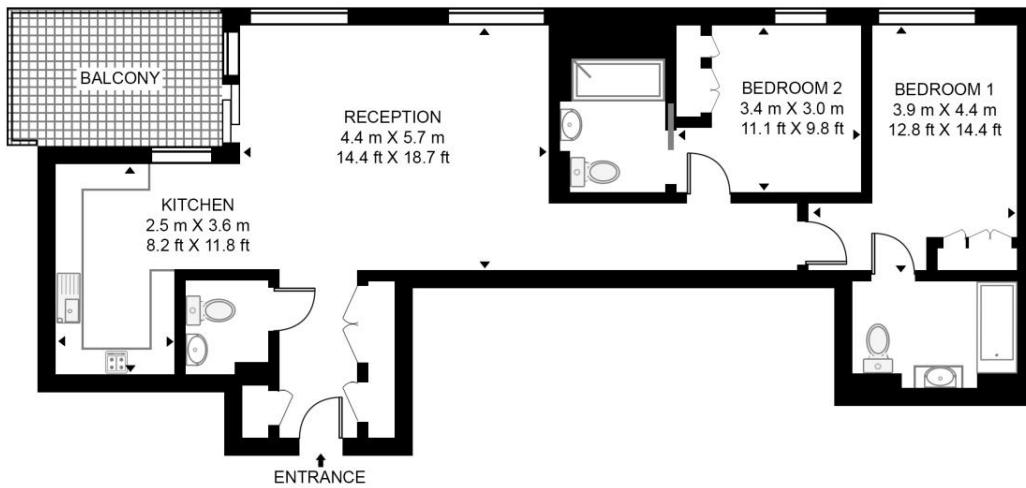
- 2 Bedrooms
- 2 Bathrooms plus guest cloakroom
- Underground Parking
- 35th Floor
- Private balcony
- On-site leisure facilities including pool, spa and cinema
- 24 hour concierge
- 0.1 miles from Old Street Station
- Approx 985 Sq Ft (91.5 sq m)
- EPC: B

Floorplan

985 sq ft | 92 sq m

ATLAS BUILDING, 145 CITY ROAD

APPROXIMATE GROSS INTERNAL FLOOR AREA 985 SQ.FT (91.5 SQ.M)



THIRTY FIFTH FLOOR



This floor plan has been defined by the RICS Code of Measurement. This floor plan and all others are for approximate representative purposes only and upon usage is agreed to as such by the client.
WWW: hdvirtualart.com | TEL: 0203.974.1567 | EMAIL: info@hdvirtualart.com

City
25 Walbrook The Walbrook
Building,
London EC4N 8AF
+4420 7337 4000

Urban living, your way.

jll.co.uk/residential

© 2019 Jones Lang LaSalle IP, Inc. All rights reserved. All information contained herein is from sources deemed reliable; however, no representation or warranty is made to the accuracy thereof.

