



**1 Bed
Apartment
located in Balham**

£2,100 PCM

ORLANDO REID



ORLANDO REID
LONDON



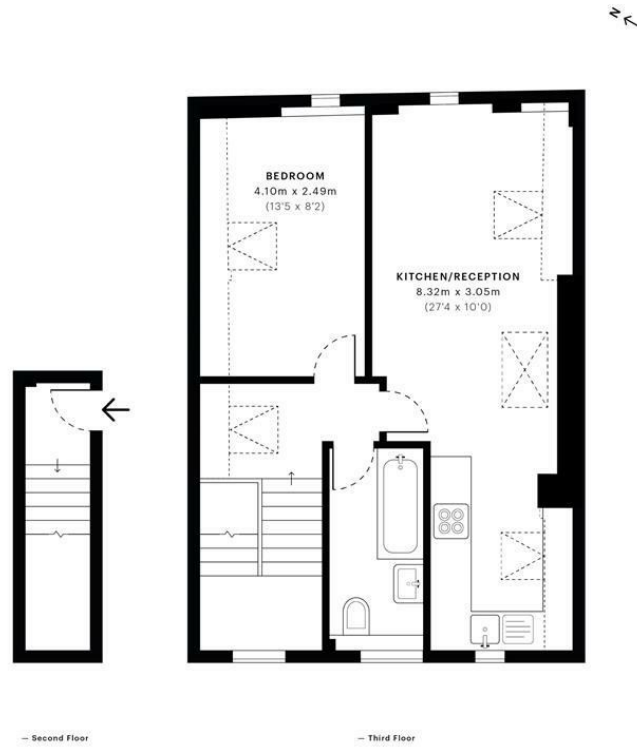
Bedford Hill, SW12

CAPTURE DATE: 30/11/2020 LASER SCAN POINTS: 1,212,216

GROSS INTERNAL AREA

50.92 sqm / 548.10 sqft

DIRECTIONS



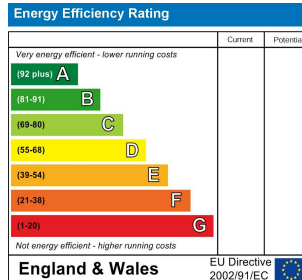
	GROSS INTERNAL AREA (GIA) The footprint of the property 50.92 sqm / 548.10 sqft		NET INTERNAL AREA (NIA) Excludes walls and structural features Includes windows, restricted head height 42.82 sqm / 460.91 sqft		EXTERNAL STRUCTURAL FEATURES Balconies, terraces, verandas etc. 0.00 sqm / 0.00 sqft		RESTRICTED HEAD HEIGHT Limited one area under 1.8m 4.59 sqm / 49.41 sqft
--	--	--	---	--	---	--	---



Spec Verified floor plans are produced in accordance with Royal Institution of Chartered Surveyors' Property Measurement Standards. Plots and gardens are illustrative only and excluded from all area calculations. Due to rounding, numbers may not add up precisely. All measurements shown for the individual room lengths and widths are the maximum points of measurements captured in the scan.

IPWS 3B RESIDENTIAL: 43.05 sqm / 463.02 sqft
IPWS 3C RESIDENTIAL: 42.82 sqm / 460.91 sqft

spec id: 5f6e351f64c0d95c63ec2



CONTACT

1-3 Old Town
Clapham
London
SW4 0JT

E: lettings@orlandoreid.co.uk
T: 020 7627 3197
www.orlandoreid.co.uk