



Ullswater Crescent, SW15

£1,695,000

This impressive five bedroom detached residence offers over 2,600 sq ft of accommodation across three floors, providing exceptional space for family living and home working alike. Complementing the generous interior is off-street parking for multiple vehicles and a beautifully established rear garden with an impressive pergola.

Ullswater Crescent is situated in a highly sought-after residential location, approximately two miles from both Wimbledon and Kingston town centres. Just 500 yards away is Robin Hood Gate, offering direct access to the vast open green spaces of Richmond Park.

Features

- Detached Family House
- Five Bedrooms
- Three Bathrooms
- Open Plan Living Area
- Over 2,600 sq.ft
- Large Garden Pergola



Ullswater Crescent, SW15

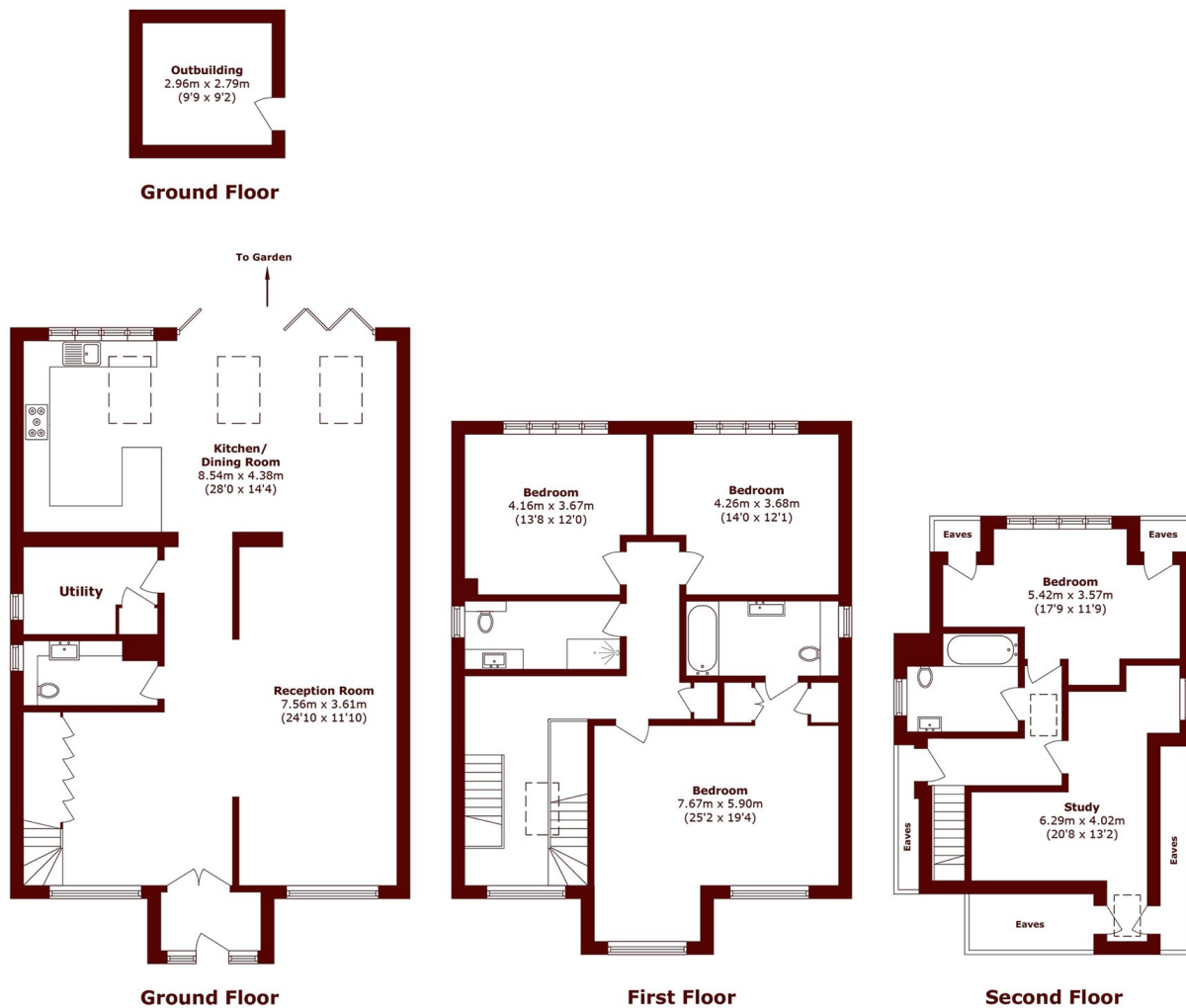
The ground floor is centred around a truly impressive open plan living area, incorporating distinct sitting, dining and kitchen zones. This exceptional room is flooded with natural light from windows to both the front and rear, as well as large skylights above the extended kitchen and dining area. The sleek modern kitchen features integrated appliances and a breakfast bar that subtly separates the dining space. Completing the ground floor are a convenient utility room and guest WC.

On the first floor is the principal bedroom suite, a generous double bedroom with a dressing area and en-suite bathroom. There are also two further double bedrooms and a family bathroom. On the top floor are two additional double bedrooms, one of which is currently utilised as a home office, together with a third bathroom.

Outside, to the front is off-street parking for multiple vehicles, while to the rear is a large garden with a lawn, raised pergola and storage shed. A wonderful space for relaxing and entertaining during the summer months, with potential to create a substantial garden room, subject to the usual consents.



Ullswater Crescent, London, SW15



Total area (approx.): 243.9 sq. m (2625.3 sq. ft)
(Excluding Eaves)

Outbuilding area (approx.): 8.2 sq. m (88.2 sq. ft)