

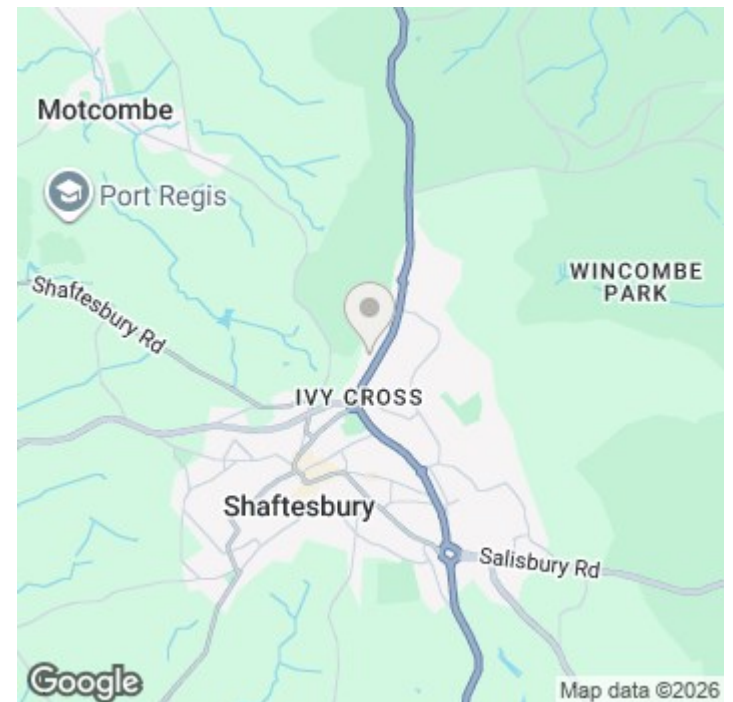


Gable Cottage, Luke Street, Berwick St John, Shaftesbury, Dorset, SP7 0HQ

£1,850 PCM

About The Property

- Lovely character cottage
- Elevated village setting
- Includes traditional Shepherd's hut
- Fully double glazed
- Oil fired central heating
- Sunny, private garden
- Driveway parking and turning
- Great views towards the downs
- Popular village with pub
- Furnished or unfurnished

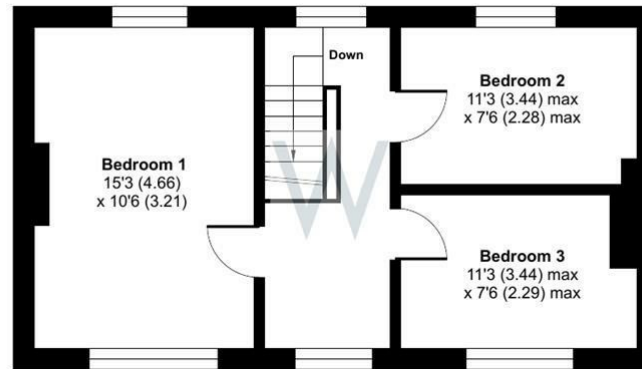
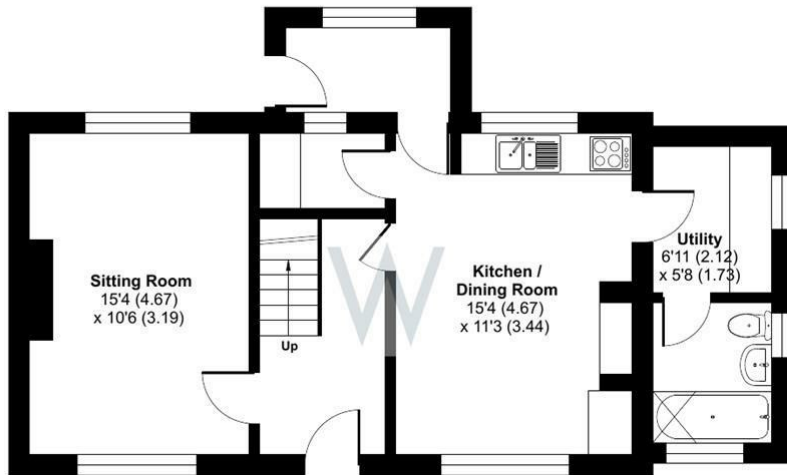




Luke Street, Berwick St. John, Shaftesbury, SP7

Approximate Area = 1013 sq ft / 94.1 sq m

For identification only - Not to scale



Floor plan produced in accordance with RICS Property Measurement Standards incorporating International Property Measurement Standards (IPMS2 Residential). © nchecom 2026. Produced for H W White Ltd. REF: 1429614



Further Information

Let available date: 10th April 2026
 NB: This date is provisional and will only be confirmed once referencing has been successfully completed.

Property type: Cottage

Furnish type: Furnished/unfurnished

Deposit: £2,130

Local authority:

Council Tax: Band

EPC: D(58)

Energy Efficiency Rating

	Current	Potential
Very energy efficient - lower running costs		
(92 plus) A		
(81-91) B		
(69-80) C		
(55-68) D	58	69
(39-54) E		
(21-38) F		
(1-20) G		
Not energy efficient - higher running costs		
England & Wales	EU Directive 2002/91/EC	