

NEW KIRK GATE

BEARSDEN



- 01 | WELCOME
- 02 | SPECIFICATIONS
- 03 | BEARSDEN
- 04 | SITE PLAN
- 05 | FLOOR PLANS



A NEW CHAPTER IN URBAN LIVING

New Kirk Gate is an exclusive development of eight luxury apartments including two penthouses with roof terraces. Set to launch in Bearsden in 2026 and occupying the landmark site of the former Old Halls at Bearsden Cross.

Thoughtfully designed to complement its prime village setting, the development comprises a limited collection of spacious three bedroom apartments and two bedroom penthouses, each created with a clear focus on quality, longevity, and modern living. Interiors are finished to a high-calibre specification throughout.

Designer kitchens by Silverbirch form the heart of each home, paired with bespoke storage solutions to hallways. Bathrooms and en suites are appointed by Scope, delivering a contemporary, spa-inspired finish that balances clean design with everyday comfort.

Every apartment enjoys a private balcony or terrace, with ground-through-third floors finished with a distinctive timber-clad exterior that adds warmth and texture to the building's architecture.

Practical considerations are equally well addressed, with allocated parking for each residence, fully landscaped communal grounds, secure video entry systems, and lift access serving all floors.

Perfectly positioned at Bearsden Cross, New Kirk Gate offers a rare opportunity to secure a modern, design-led home in one of Bearsden's most established and convenient locations, combining village life, connectivity, and understated luxury in equal measure.



The Kitchens

- The Silver Birch Collection includes 8 door ranges with over 30 colours and countless combinations to choose from
- A vast handle range is available, with handles installed horizontally centred on door fronts. All wall units will be handleless
- Carcass includes soft close doors/drawers as standard. Carcass options of Crystal White or Titanium, with colour coordinating front edge to match door
- Worktops are 20mm Silestone Quartz with matching 100mm upstand. 25mm Laminate worktop in utility (Penthouse only)
- Blanco branded sinks and taps are included within the design
- Accessories include Sensio LED strip lighting below wall units/shelving and cutlery tray to suit drawer width
- Appliances include;
 - SIEMENS**
 - Built-in Combi Microwave
 - Built-in Single Oven
 - Induction Hob
 - BOSCH**
 - Integrated Washer Dryer
 - Integrated Dishwasher
 - Integrated Fridge Freezer

The Bathrooms

- Designer sanitaryware by Villeroy & Boch
- Luxury fixtures and fittings by Hansgrohe
- Half height wall tiling as standard
Upgrade to full height available
- Thermostatic shower system with chrome fixtures in en-suite
- Matching polished chrome shower and bath screens with matching fixtures and fittings
- Illuminated mirror with demister and shaver socket



Flooring

- Carpeted bedrooms
Upgrade available for LVT
- A choice of LVT in all other rooms
Upgrade available for tiled floors in bathrooms and en-suites

Heating & Electric

- High performance electric heating
- Dedicated solar panels
- Underfloor heating throughout

Lighting

- Centre lights on ceiling in lounge and bedrooms
- Centre lights and spotlights in kitchen
- Wall mounted spotlights on balconies and terraces

Interior Features

- Fibre optic broadband
- Fitted wardrobes
Upgrades available
- Double glazed windows and balcony/terrace doors
- Secure video entry system

Building & Exterior

- Communal lift to all floors
- Each plot has its own parking space with an EV charger
- Bike storage area
- Communal drying space





CULTURE, CONVENIENCE, COMMUNITY

Set in one of the most desirable residential suburbs of the Greater Glasgow area, Bearsden combines leafy tranquillity with excellent everyday convenience offering the perfect balance between suburban peace and vibrant community life.

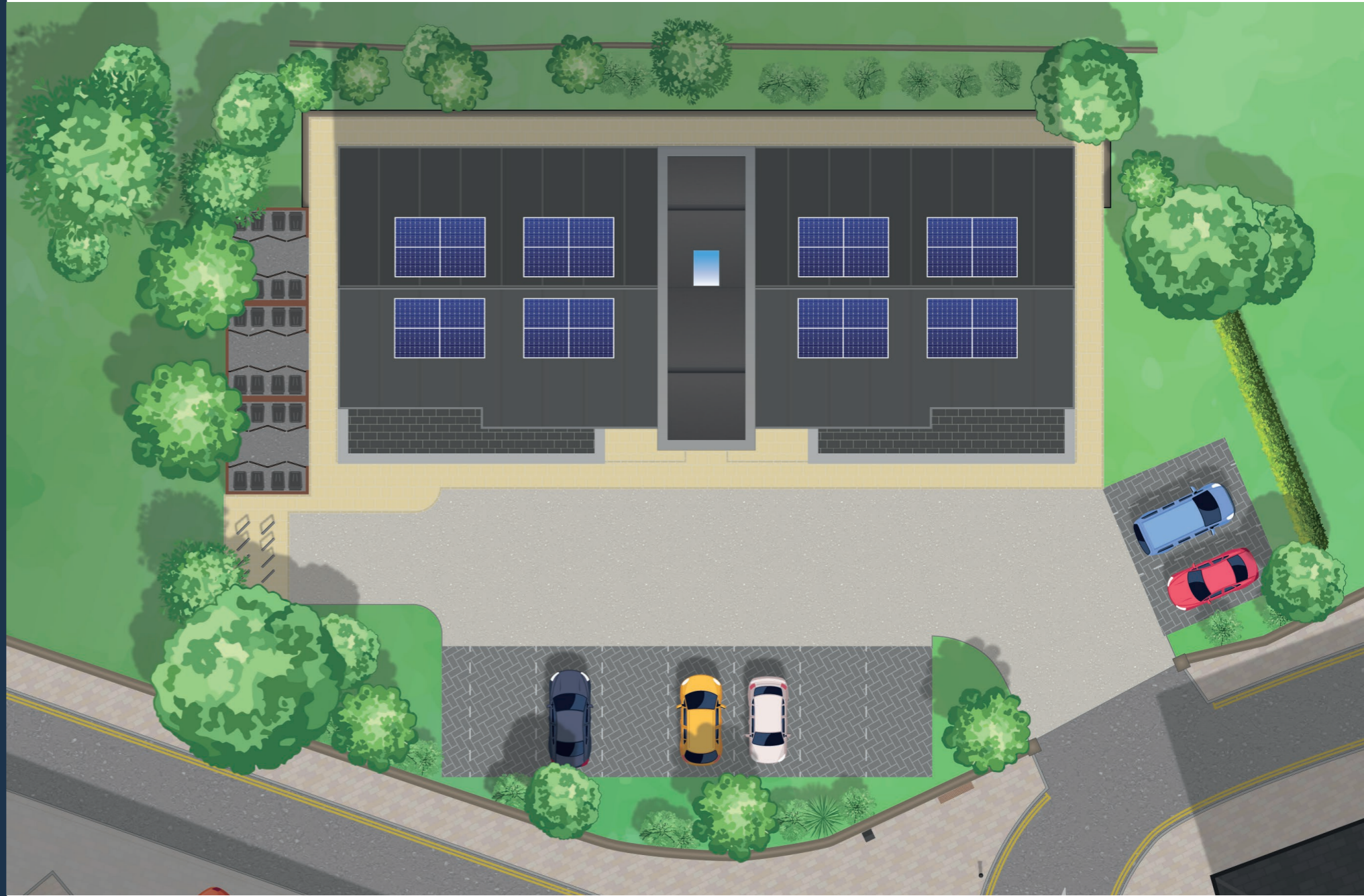
At the heart of the area lies Bearsden Cross with a superb selection of quality local & independent shops, cafés, well regarded restaurants and services. There are a number of excellent leisure facilities

close by including Thorn & Bearsden Tennis Clubs, Allander Leisure Centre and numerous Golf Clubs. Transport links are provided by both bus and rail providing swift access into Glasgow city centre & the West End.

Whether you're drawn by the village-like community, excellent amenities, outstanding schools, or scenic outdoor lifestyle, Bearsden represent exceptional lifestyle living with enduring appeal.



2 Douglas Place, Bearsden, G61 3SH



PLOTS
G1, F1 & S1

129m²
1388 sq.ft.

- Living / Dining**
24'3" x 17'11"
(7.40m x 5.45m)
- Kitchen**
12'2" x 8'2"
(3.70m x 2.50m)
- Principal Bedroom**
9'10" x 19'0"
(3.00m x 5.80m)
- En-Suite**
8'4" x 5'11"
(2.55m x 1.80m)
- Bedroom 2**
9'10" x 13'1"
(3.00m x 4.00m)
- Bedroom 3**
9'10" x 13'1"
(3.00m x 4.00m)
- Bathroom**
8'4" x 6'7"
(2.55m x 2.00m)



PLOTS
G2, F2 & S2

129m²
1388 sq.ft.

- Living / Dining**
24'3" x 17'11"
(7.40m x 5.45m)
- Kitchen**
12'2" x 8'2"
(3.70m x 2.50m)
- Principal Bedroom**
9'10" x 19'0"
(3.00m x 5.80m)
- En-Suite**
8'4" x 5'11"
(2.55m x 1.80m)
- Bedroom 2**
9'10" x 13'1"
(3.00m x 4.00m)
- Bedroom 3**
9'10" x 13'1"
(3.00m x 4.00m)
- Bathroom**
8'4" x 6'7"
(2.55m x 2.00m)



PENTHOUSE 1

119 m²
1280 sq.ft.



PENTHOUSE 2

119 m²
1280 sq.ft.





For more information on New Kirk Gate, contact Corum today

Corum Bearsden, 1 Canniesburn Toll, Bearsden. G61 2QU

T: 0141 942 5888

E: bearsdenenq@corumproperty.co.uk

corumproperty.co.uk

A DEVELOPMENT FROM



The particulars herein have been prepared for the benefit of the intending purchasers. However, the information contained is intended as a preliminary guide only. Fairbright Homes reserves the right to amend or vary specifications. All sizes are indicative and subject to change during construction. Nothing in this brochure shall constitute or form part of any contract. The computer generated images used in this brochure are indicative only. All measurements and distances are approximate and for guidance only. Floor plans and images are for illustration purposes and may not be to scale.



c o r u m

corumproperty.co.uk