



WHITE HOUSE

Station Road, Fladbury, Pershore, Worcestershire



A HANDSOME LISTED FAMILY HOUSE

In the centre of the village with a secluded walled garden and secure parking.



Local Authority: Wychavon District Council

Council Tax band: G

Freehold



SITUATION

White House sits within a Conservation Area in the heart of a picturesque village on the River Avon, with amenities including a primary school, hairdresser, village hall, church, butchers, two pubs, and various sports clubs.

Pershore, 5 miles away, caters for everyday needs, while Worcester, Stratford-upon-Avon and Cheltenham offer wider shopping and services. Evesham and Pershore, just 4 miles away, provide additional facilities and stations with direct trains to London Paddington.

The area has excellent road links via the M5, M40 and M42, good access to schools including Pershore High and Prince Henry's Grammar School in Evesham, and attractive countryside with riverside walks throughout the Vale of Evesham.









THE PROPERTY

White House is a very handsome Grade II listed six bedroom Georgian village house, well-positioned in the village within walking distance of amenities, dating from the early C19 with a beautiful stucco-rendered façade with ornate window mouldings, to the C17 original timbered property.

The house contains fine period elements, and with large windows and bays provides rooms with plenty of light, with French doors out to the garden from the kitchen, breakfast room and drawing room, through the loggia. The accommodation flows comfortably to make full use of the garden.

The house has a lovely ambience, and the accommodation can be adapted by using rooms in different ways to suit the owner. There are flagstone and antique boarded floors, fine cast iron fireplaces, attractive moulded frieze and cornices, bay and Georgian sash and leaded windows. There is a wood-burning stove in the dining room inglenook and another in the sitting room.

With six bedrooms, two on the second floor, and study/ homework areas, the accommodation is versatile to suit a buyer's requirements. The house is very well-maintained, and a purchaser can move straight in without the need to undertake any building or alteration work.







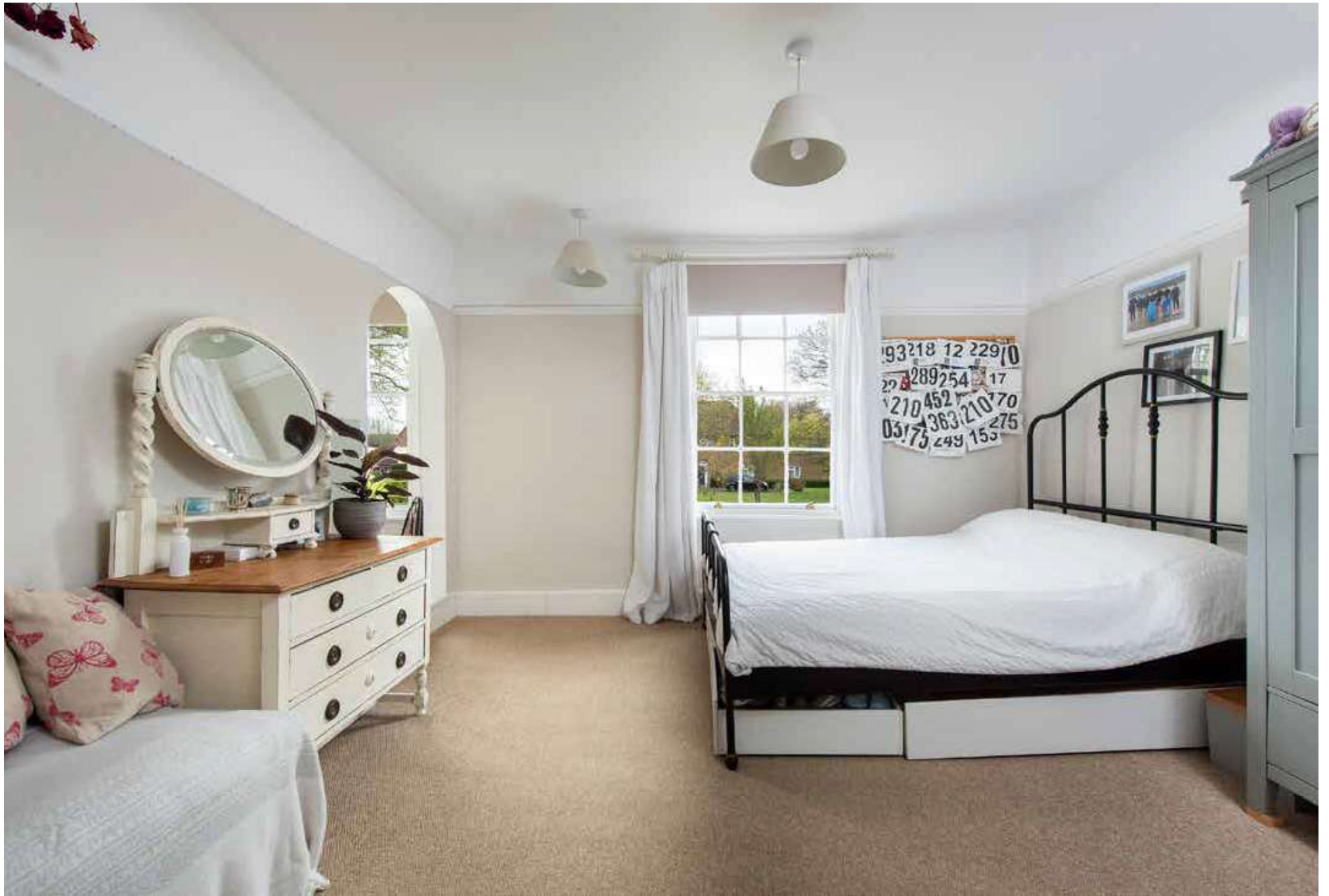
OUTSIDE

Screened from the village street by an evergreen and beech hedge and boundary wall with a shallow front garden to the front door.

The house has a delightful, well-stocked south-west facing walled garden behind, with a loggia, flagstone patio, ornamental pond, lawn and bulb, shrub and herbaceous beds and borders. Fine yew and fruit trees, former timber garage/ garden store and gardener's WC and attached store.

There is secure parking with double wooden gates.







Services

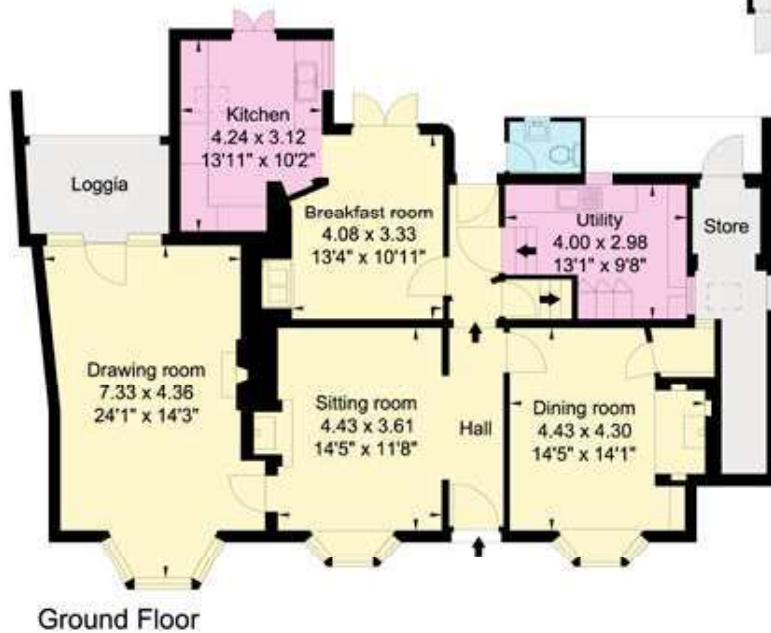
Mains gas, electricity, drainage and water. Gas-fired central heating. Broadband.

Directions (WR10 2QW)

What3words: ///fiery.scripted.flame





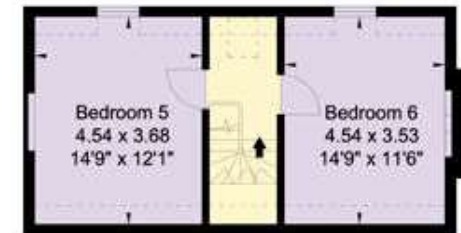


Ground Floor

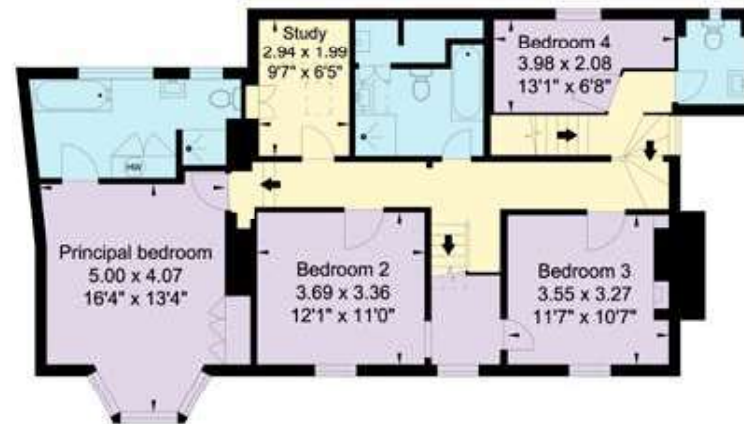
Outbuilding
Not shown in actual location / orientation



Denotes restricted head height



Second Floor



First Floor



APPROXIMATE GROSS INTERNAL FLOOR AREA:

House: 265 sq m (2,853 sq ft)

Attached Loggia/WC/Store: 16 sq m (172 sq ft)

Outbuilding: 20 sq m (218 sq ft)

Total: 301 sq m (3,243 sq ft)

inc. restricted head height

© Cotswold Plans Ltd ma/16513

This plan is for guidance only and must not be relied upon as a statement of fact. Attention is drawn to the Important Notice on the last page of text of the Particulars.

White House Fladbury





James Way

01789 297735

james.way@knightfrank.com

Knight Frank Stratford-upon-Avon

Bridgeway House, Bridgeway

Stratford-upon-Avon, Warwickshire CV37 6YX

knightfrank.co.uk

Your partners in property

1. Particulars: These particulars are not an offer or contract, nor part of one. You should not rely on statements given by Knight Frank in the particulars, by word of mouth or in writing ("information") as being factually accurate about the property, its condition or its value. Neither Knight Frank nor any joint agent has any authority to make any representations about the property, and accordingly any information given is entirely without responsibility on the part of Knight Frank. 2. Material Information: Please note that the material information is provided to Knight Frank by third parties and is provided here as a guide only. While Knight Frank has taken steps to verify this information, we advise you to confirm the details of any such material information prior to any offer being submitted. If we are informed of changes to this information by the seller or another third party, we will use reasonable endeavours to update this as soon as practical. 3. Photos, Videos etc: The photographs, property videos and virtual viewings etc. show only certain parts of the property as they appeared at the time they were taken. Areas, measurements and distances given are approximate only. 4. Regulations etc: Any reference to alterations to, or use of, any part of the property does not mean that any necessary planning, building regulations or other consent has been obtained. A buyer must find out by inspection or in other ways that these matters have been properly dealt with and that all information is correct. 5. Fixtures and fittings: A list of the fitted carpets, curtains, light fittings and other items fixed to the property which are included in the sale (or may be available by separate negotiation) will be provided by the Seller's Solicitors. 6. VAT: The VAT position relating to the property may change without notice. 7. To find out how we process Personal Data, please refer to our Group Privacy Statement and other notices at <https://www.knightfrank.com/legals/privacy-statement>.

Particulars dated May 2026. Photographs and videos dated May 2026. All information is correct at the time of going to print. Knight Frank is the trading name of Knight Frank LLP. Knight Frank LLP is a limited liability partnership registered in England and Wales with registered number OC305934. Our registered office is at 55 Baker Street, London W1U 8AN. We use the term 'partner' to refer to a member of Knight Frank LLP, or an employee or consultant. A list of members names of Knight Frank LLP may be inspected at our registered office. If you do not want us to contact you further about our services then please contact us by either calling 020 3544 0692, email to marketing.help@knightfrank.com or post to our UK Residential Marketing Manager at our registered office (above) providing your name and address.





Date: 09 May 2026
Our reference: STR012640797

White House, Station Road, Fladbury, Pershore, WR10 2QW

We have pleasure in enclosing details of the above property for which we are quoting a guide price of **£975,000**.

Please let us know if you need any further information about the property or surrounding area and we will be delighted to provide it.

Full details of all our properties and a wide range of services can be viewed online at knightfrank.co.uk. You can also receive early information on new properties coming on to the market by signing up to [My Knight Frank](#).

For additional information or to make arrangements to view the property, please get in touch.

We'd love to help you.

Yours faithfully

A stylized, handwritten signature in black ink that reads "Knight Frank".

KNIGHT FRANK LLP

Enc:

James Way
Partner, Head of Midlands Sales
+44 1789206950
james.way@knightfrank.com

Knight Frank, Stratford
Bridgeway House, Bridgeway, Stratford upon Avon, CV37 6YX
+44 1789 297 735

knightfrank.co.uk

Knight Frank LLP is a limited liability partnership registered in England and Wales with registered number OC305934. Our registered office is at 55 Baker Street, London W1U 8AN. We use the term 'partner' to refer to a member of Knight Frank LLP, or an employee or consultant. A list of members' names of Knight Frank LLP may be inspected at our registered office.

Regulated by RICS

Your partners in property

V4.3 Sep 24