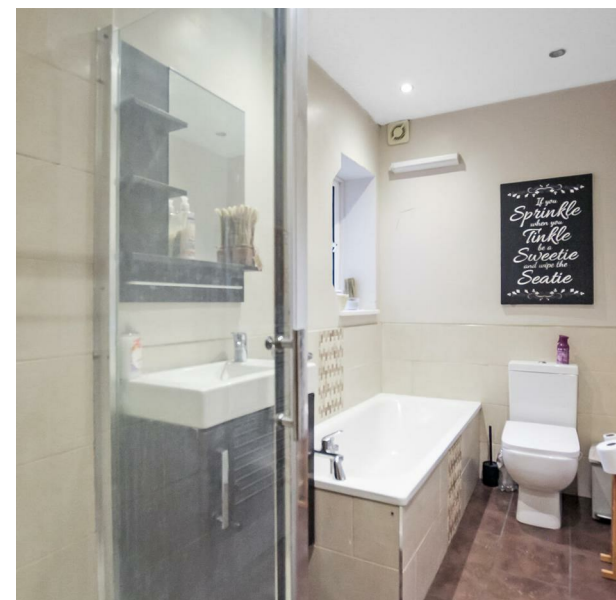


91 Empire Court North End Road, Wembley, HA9 0AH  
Guide price £325,000  
Council Tax Band: B



A highly sought after two bedroom flat with spacious living room, separate kitchen and long lease remaining and within 0.2 miles of Wembley Park Tube Station make this ideal for first time buyers, young families & investors.

The property has a secure communal entrance for residents. Entering the flat, there is a hallway with access to the kitchen which has cupboard space to three sides with space & plumbing for a cooker, fridge-freezer and washing machine. There is a spacious living room and two bedrooms both with built in wardrobes to one side. The family bathroom with shower over the bath, w/c, hand basin and towel rail. Outside there are communal gardens for residents use only.

Property ownership information



91 Empire Court North End Road  
Wembley  
HA9 0AH  
0208 004 0045  
admin@urbankeys.co.uk  
https://urbankeys.co.uk/



| Energy Efficiency Rating                    |                         |           |
|---|-------------------------|-----------|
|   | Current                 | Potential |
| Very energy efficient - lower running costs |                         |           |
| (92 plus) <b>A</b>                          |                         |           |
| (81-91) <b>B</b>                            |                         |           |
| (69-80) <b>C</b>                            |                         |           |
| (55-68) <b>D</b>                            |                         |           |
| (39-54) <b>E</b>                            |                         |           |
| (21-38) <b>F</b>                            |                         |           |
| (1-20) <b>G</b>                             |                         |           |
| Not energy efficient - higher running costs |                         |           |
|   | 70                      |           |
| England & Wales                             | EU Directive 2002/91/EC |           |