



Holland Park Gardens, W14

£923 Per week

Dexters



Holland Park Gardens, W14

An exceptionally spacious and beautifully presented two double-bedroom apartment positioned on the third floor of an attractive period conversion in the heart of Holland Park, W11. The property offers a bright west-facing reception room, a generous eat-in kitchen, and two well-proportioned double bedrooms, including a principal with en-suite. A superb home combining period charm with excellent natural light.

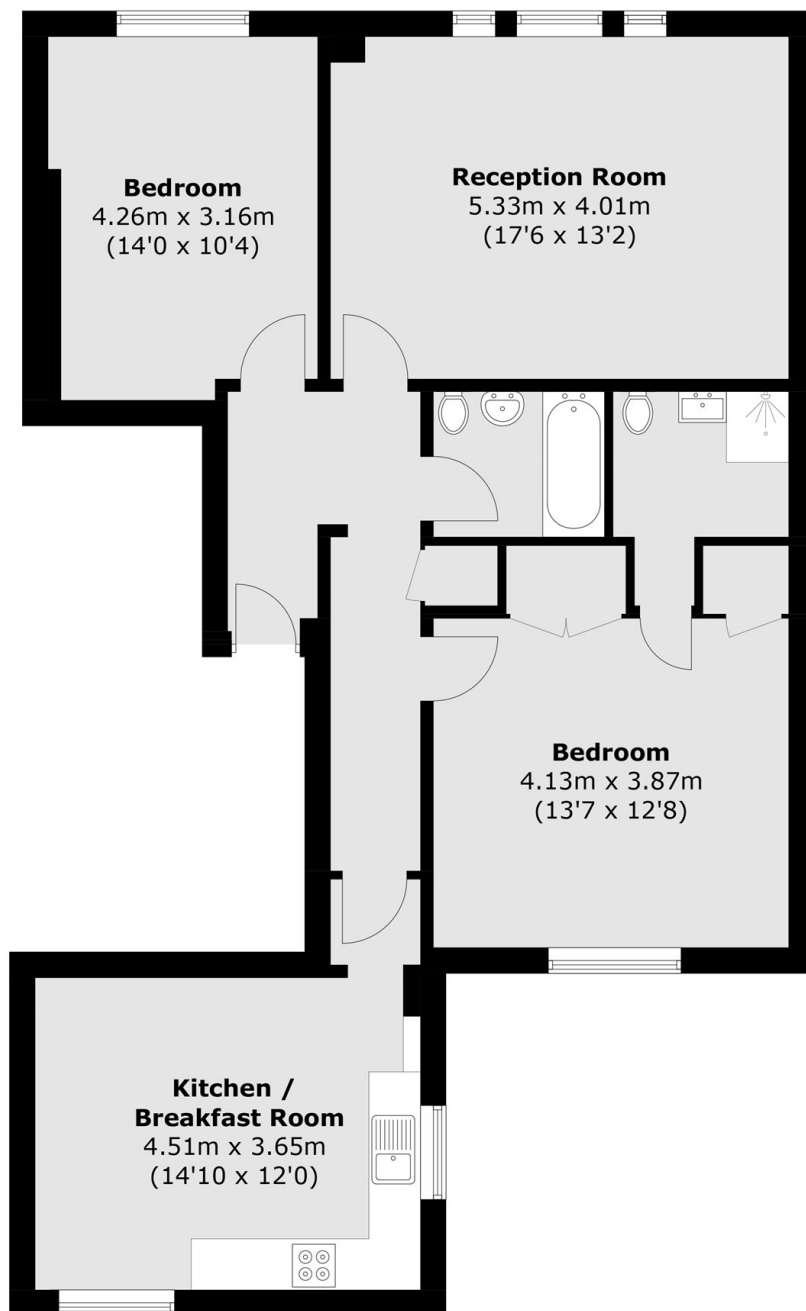
The property is well situated on a residential street in the Holland Park area with local shops, cafes and Holland Park tube station only a short distance away.

Features

- Two Double Bedrooms
- Two Bathrooms
- Separate Eat-In kitchen
- Professionally Managed
- Great Natural Light
- Third Floor



Holland Park Gardens, London, W14



Total area (approx.): 91.1 sq. m (980.6 sq. ft)