

City Road, London EC1V

Price £985 per week - Furnished







Description

Set on the 25th floor of the popular Atlas Building, Old Street, this bright and spacious 2 bedroom apartment boasts stunning views of the City towards Canary Wharf and Stratford Olympic Park and measures to 846 sqft.

This luxurious residence comprises of an open plan living and reception area with floor to ceiling windows allowing natural light to flourish throughout, a fully fitted contemporary kitchen, an inviting and generous balcony, a principal bedroom and a further bedroom, each with fitted wardrobes, two luxury bathrooms with a porcelain finish and polished wooden flooring.

The development offers top of the range amenities which includes pool, spa, gymnasium, private cinema room, resident's only business lounge and 24 hour concierge. Each apartment also benefits from comfort cooling / heating. The Atlas Building is next to Old Street station (0.1 mile) and a short walk to the City, Hoxton, Shoreditch and Angel.

Council tax band: F. Rent is payable on a monthly basis, and you may be required to pay more than a month's rent in advance for tenancies with annual rents exceeding £100,000. You will be required to pay a 1 week holding deposit following a successful offer. Tenancies with annual rents up to £50,000 will require a 5 weeks' security deposit, while those exceeding this threshold will require a 6 weeks' deposit. Utility bills, council tax, telephone line and broadband are not included in the rent. As well as paying the rent, you may also be required to make some additional permitted payments. If your tenancy does not qualify as an APT, additional fees may apply. Please visit jll.co.uk/fees for details of fees that may be payable when renting a property. To check broadband and mobile phone coverage please visit Ofcom here ofcom.org.uk/phones-telecoms-and-internet/advice-for-consumers/advice/ofcom-checker

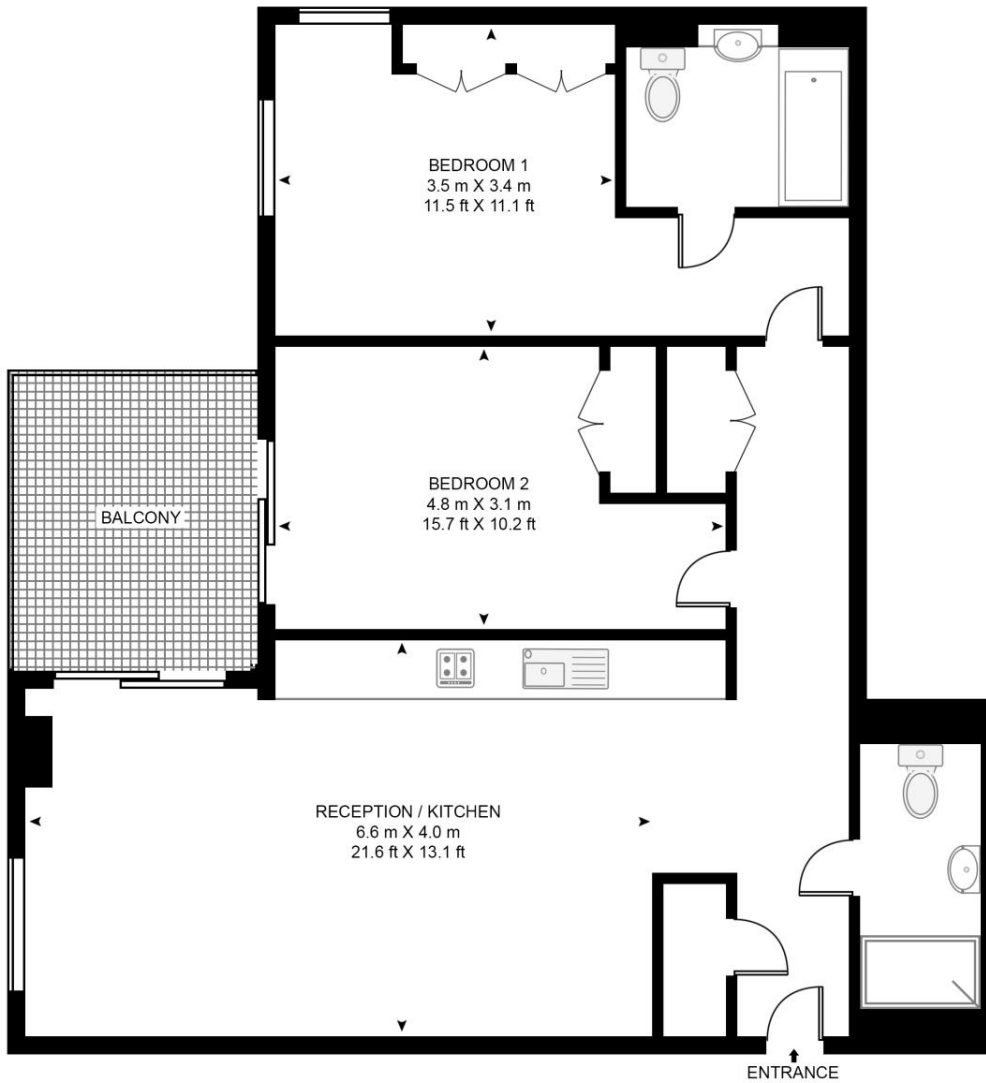
- Two bedroom apartment
- Two bathrooms
- Flowing natural light throughout
- 846 sq ft
- 25th floor
- Generous Balcony offering dual aspect views of the City and Canary Wharf.
- 24 hour concierge, luxury communal facilities including screening room, pool, spa
- Ideally located for Tech City, The City and Islington.
- Council tax: Band F
- Deposit amount: £5,910

Floorplan

846 sq ft | 79 sq m

ATLAS BUILDING

APPROXIMATE GROSS INTERNAL FLOOR AREA 846 SQ.FT (78.6 SQ.M)



TWENTY FIFTH FLOOR



This floor plan has been defined by the RICS Code of Measurement. This floor plan and all others are for approximate representative purposes only and upon usage is agreed to as such by the client.
WWW: hdvirtualart.com | TEL: 0203.974.1567 | EMAIL: info@hdvirtualart.com

City
25 Walbrook The Walbrook
Building,
London EC4N 8AF
+4420 7337 4000

Urban living, your way.

jll.co.uk/residential

© 2019 Jones Lang LaSalle IP, Inc. All rights reserved. All information contained herein is from sources deemed reliable; however, no representation or warranty is made to the accuracy thereof.

