



Yew Tree Rise, Pinewood, Ipswich, IP8 3RJ

welcome to

Yew Tree Rise, Pinewood, Ipswich

This well-presented, one bedroom, end terraced home is situated in a quiet Close and benefits from a separate lounge and kitchen, a 1st floor shower room, a generous rear garden and two allocated parking spaces.

Lounge

Double glazed window to the front, wood effect flooring, one radiator, a wall papered wall, TV point, an understairs storage cupboard and a staircase with stair lift to stay.

Kitchen

A door to the garden, double glazed window to the rear, eye and base level units in wood with stone effect worktop surfaces, a stainless steel sink plus drainer and chrome taps, tiled splashback, tiled effect flooring and space for appliances.

First Floor Landing

Double glazed window to the rear, carpet flooring, one radiator and an airing cupboard.

Bedroom

Double glazed window to the front, carpet flooring, one radiator, a built in wardrobe and loft hatch.

Shower Room

Low level WC, pedestal wash hand basin, a shower, stone effect flooring, part tiled walls and one radiator.

Outside:

Front Garden

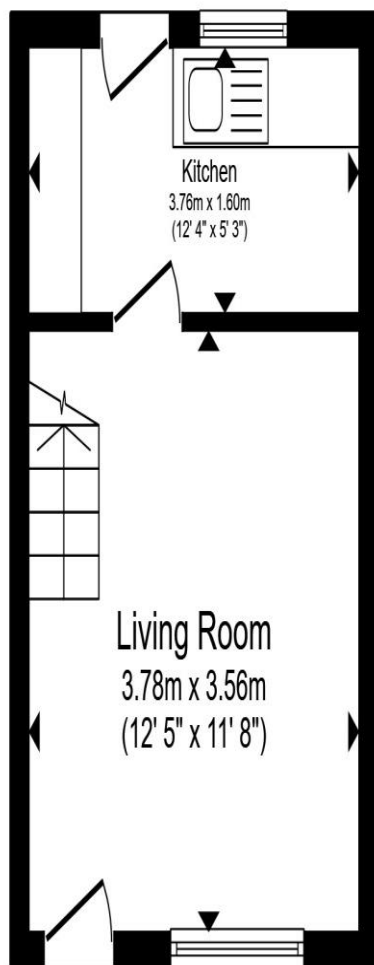
A grassed area and a pathway to the front door.

Rear Garden

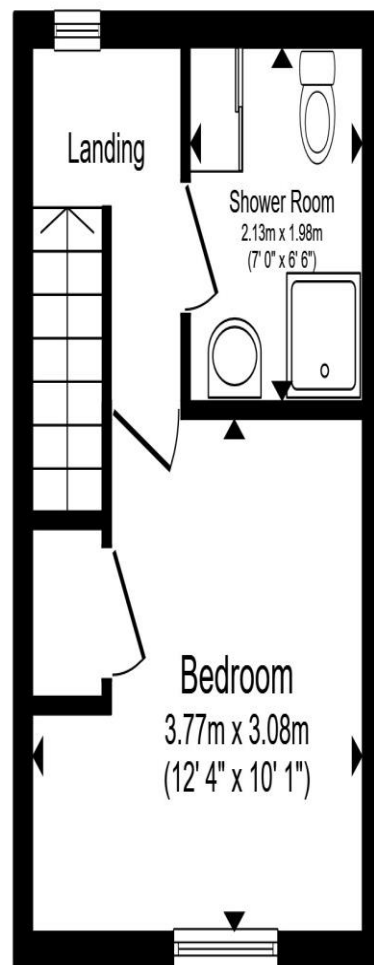
A fully enclosed border, a rear gate, a grassed area, a patio area, stepping stones leading to the rear, a shed and an outside tap.

Parking

Two allocated parking spaces, one is to the side of the property and the other is in the communal car park nearby.



Ground Floor



First Floor

Total floor area 40.1 m² (432 sq.ft.) approx

This floor plan is for illustrative purposes only. It is not drawn to scale. Any measurements, floor areas (including any total floor area), openings and orientation are approximate. No details are guaranteed, they cannot be relied upon for any purpose and they do not form part of any agreement. No liability is taken for any error, omission or misstatement. A party must rely upon its own inspection(s). Powered by www.propertybox.io



welcome to
Yew Tree Rise,
Pinewood, Ipswich

- One large bedroom
- Seperate lounge & kitchen
- 1st floor shower room
- Generous rear garden
- Two allocated parking spaces

Tenure: Freehold EPC Rating: C
Council Tax Band: A

£160,000



view this property online williamhbrown.co.uk/Property/IPS121040



Property Ref:
IPS121040 - 0002

1. MONEY LAUNDERING REGULATIONS Intending purchasers will be asked to produce identification documentation at a later stage and we would ask for your co-operation in order that there is no delay in agreeing the sale. 2. These particulars do not constitute part or all of an offer or contract. 3. The measurements indicated are supplied for guidance only and as such must be considered incorrect. Potential buyers are advised to recheck measurements before committing to any expense. 4. We have not tested any apparatus, equipment, fixtures or services and it is in the buyers interest to check the working condition of any appliances. 5. Where an EPC, or a Home Report (Scotland only) is held for this property, it is available for inspection at the branch by appointment. If you require a printed version of a Home Report, you will need to pay a reasonable production charge reflecting printing and other costs. 6. We are not able to offer an opinion either written or verbal on the content of these reports and this must be obtained from your legal representative. 7. Whilst we take care in preparing these reports, a buyer should ensure that his/her legal representative confirms as soon as possible all matters relating to title including the extent and boundaries of the property and other important matters before exchange of contracts.

William H Brown is a trading name of Sequence (UK) Limited which is registered in England and Wales under company number 4268443, Registered Office is Cumbria House, 16-20 Hockliffe Street, Leighton Buzzard, Bedfordshire, LU7 1GN. VAT Registration Number is 500 2481 05.



william h brown



01473 226101



ipswich@williamhbrown.co.uk



16-18 Wolsey House, Princes Street, IPSWICH,
Suffolk, IP1 1QT



williamhbrown.co.uk