

Directions

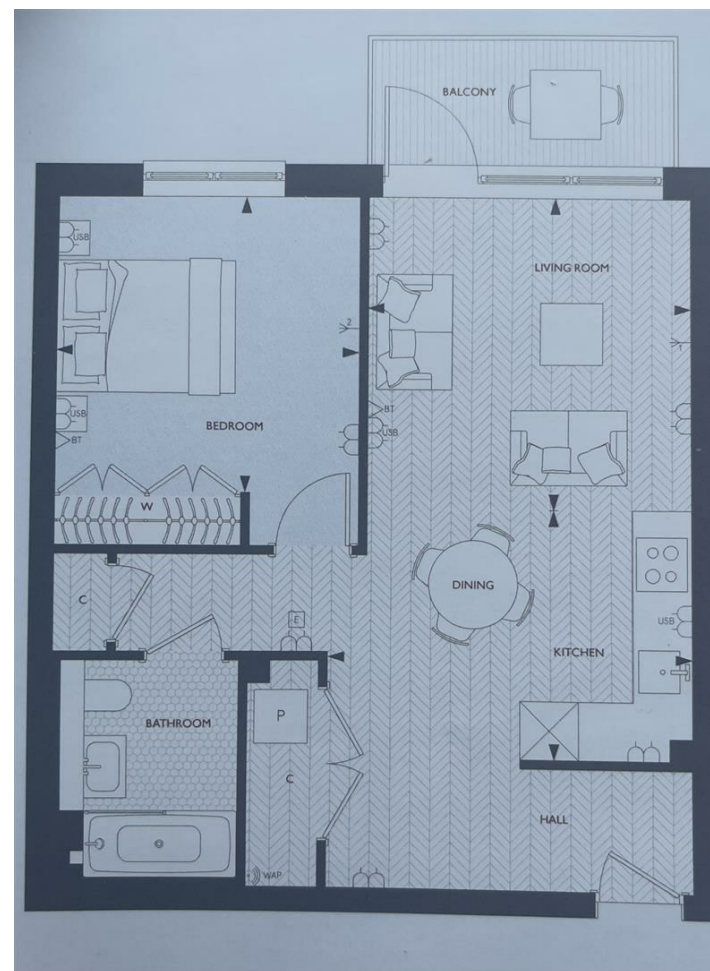
Viewings

Viewings by arrangement only. Call 02033696888 to make an appointment.

EPC Rating

B

Energy Efficiency Rating		Current	Potential
Very energy efficient - lower running costs			
(92 plus) A			
(81-91) B		85	
(69-80) C			
(55-68) D			
(39-54) E			
(21-38) F			
(1-20) G			
Not energy efficient - higher running costs			
England & Wales		EU Directive 2002/91/EC	



CN502 Flat 22, Canning House 7 Heritage Walk, Kingston Upon Thames, KT1 2UT
£508

Canning House 7 Heritage Walk, Kingston Upon

Thames KT1 2JH

*** Please quote reference JC2306142 when contacting the office ***

Welcome to Canning House, a charming flat located in the picturesque area of Kingston Upon Thames. This delightful property features a well-appointed reception room, perfect for relaxing or entertaining guests. The flat boasts a comfortable bedroom, providing a peaceful retreat at the end of the day. Additionally, there is a modern bathroom that caters to all your needs.

Canning House is ideally situated, offering easy access to the vibrant local amenities of Kingston, including shops, restaurants, and parks. The area is well-connected by public transport, making it convenient for commuting to London and beyond.

This flat presents an excellent opportunity for first-time buyers or those looking to downsize. With its appealing layout and prime location, Canning House is a wonderful place to call home. Don't miss the chance to view this property and experience the charm of Kingston Upon Thames for yourself.



Council Tax Band: D

