





Reduced To £699,950



Features

- Executive 17th Century Character Residence
- Sought After Hayfield Village Location
- Generous Grounds With Outbuildings
- Wealth Of Period Features
- Versatile Spacious Accommodation
- Immaculate Presentation
- Four Bedrooms, Two Shower Rooms and Family Bathroom
- Driveway Parking and Car Port
- Double Glazing With Stone Mullions

Located in the heart of picturesque Hayfield Village, on the doorstep of Kinder Scout, a delightful 17th century stone-built cottage of character. Set back from the road with generous, beautifully maintained grounds with ample driveway parking and useful outbuildings. Stunning, superbly presented spacious accommodation with a wealth of features. Blending old with new, this fabulous four bedroom family home is well worth a viewing. Comprising: entrance porch, galleried hall, wc, living room with wood burning stove, breakfast kitchen, separate dining room, utility room, shower room, four first floor bedrooms, bathroom and shower room. Double glazed with mullion windows and gas central heating, Viewing highly recommended

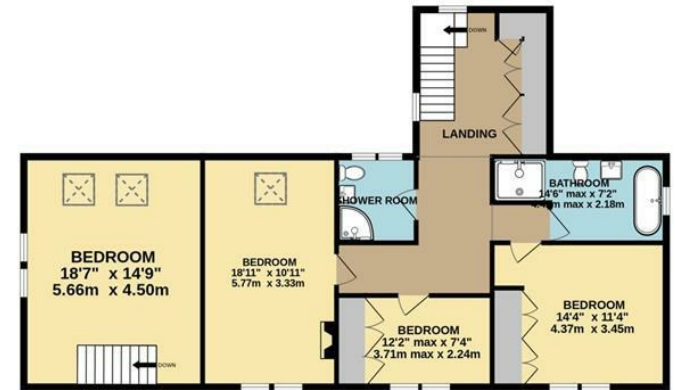
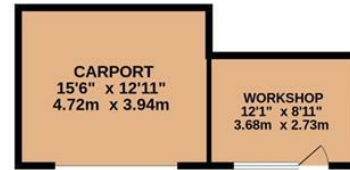


Situated at the foot of the Kinder Scout, Hayfield is renowned for its annual Country Show and Sheepdog trials. You will find a range of shops as well as a popular art gallery and gift shop and the Sett Valley Trail links Hayfield to New Mills. Placed between Glossop, Chapel-en-le-frith and New Mills, it's an ideal place to live away from the busier nearby towns with excellent rail links to Manchester and Sheffield.



GROUND FLOOR

1ST FLOOR



Whilst every attempt has been made to ensure the accuracy of the floorplan contained here, measurements of doors, windows, rooms and any other items are approximate and no responsibility is taken for any error, omission or mis-statement. This plan is for illustrative purposes only and should be used as such by any prospective purchaser. The services, systems and appliances shown have not been tested and no guarantee as to their operability or efficiency can be given.
Made with Metropix ©2024



IMPORTANT: we would like to inform prospective purchasers that these sales particulars have been prepared as a general guide only. A detailed survey has not been carried out, nor the services, appliances and fittings tested. Room sizes should not be relied upon for furnishing purposes and are approximate. If floor plans are included, they are for guidance only and illustration purposes only and may not be to scale. If there are any important matters likely to affect your decision to buy, please contact us before viewing the property.



JORDAN FISHWICK
EXCLUSIVE

Jordan Fishwick
2 Union Road, New Mills, High Peak, Derbyshire, SK22 3ES
01663 767878
newmills@jordanfishwick.co.uk