



Cefn Adda Close, Guide Price £315,000 to £325,000

- Four Bedroom Detached House
- Two Reception Rooms
- Open-plan Kitchen/Diner
- Enclosed Rear Garden
- Garage and Driveway
- En-Suite to Master Bedroom
- Located Near Well-Regarded Schools and Local Amenities
- Excellent Transport Links To Newport City Centre



 4  2  2

Pinkmove

01633 746088
team@pinkmove.co.uk



Pinkmove

About the property

Spacious four-bedroom detached home in Cefn Adda Close, Newport. Features include two reception rooms, open-plan kitchen/diner, utility with WC, master en-suite, family bathroom, garage, and driveway for two cars. Close to schools, shops, and excellent transport links—ideal for family living.



Pinkmove



Pinkmove



Accommodation

Living Room

13' 2" x 10' 8" (4.01m x 3.25m)

Kitchen/Diner

9' 5" x 20' (2.87m x 6.10m)

Utility

6' x 5' (1.83m x 1.52m)

Downstairs Wc

2' 11" x 4' (0.89m x 1.22m)

Reception Room

9' 9" x 10' 8" (2.97m x 3.25m)

Max Measurements

Bathroom

6' 5" x 8' 2" (1.96m x 2.49m)

Bedroom 1

11' 5" x 12' 11" (3.48m x 3.94m)

Max Measurements

En-Suite

6' 5" x 5' 4" (1.96m x 1.63m)

Max Measurements

Bedroom 2

11' 7" x 12' 11" (3.53m x 3.94m)

Max Measurements

Bedroom 3

9' 11" x 9' 3" (3.02m x 2.82m)

Bedroom 4

8' 3" x 7' 9" (2.51m x 2.36m)

Garage

20' x 10' (6.10m x 3.05m)

01633 746088

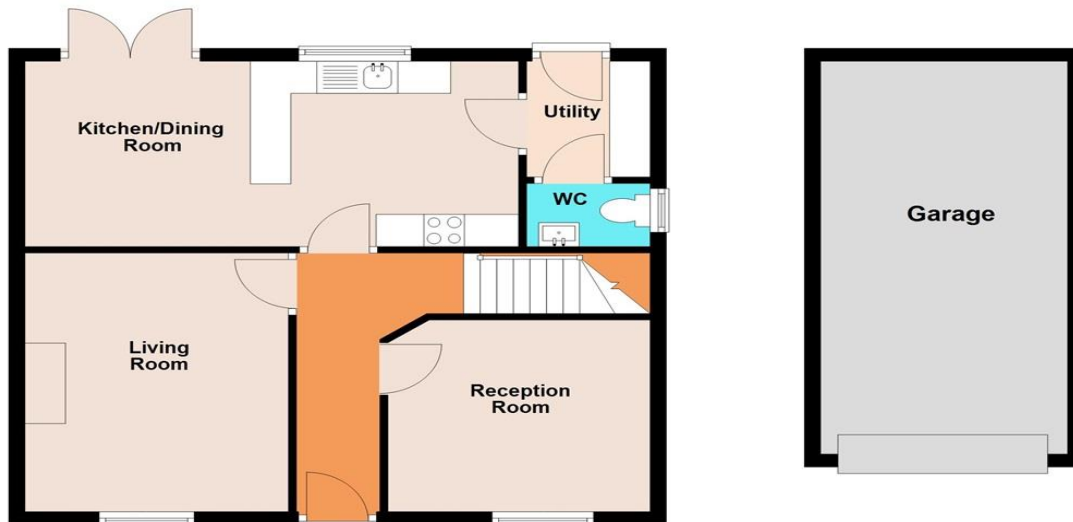
team@pinkmove.co.uk

Pinkmove

Floorplan

Ground Floor

Approx. 72.5 sq. metres (780.5 sq. feet)



First Floor

Approx. 53.9 sq. metres (580.5 sq. feet)



Total area: approx. 126.4 sq. metres (1360.9 sq. feet)

1 Cefn Adda Close

Important Information

Note while we endeavour to make our sales details accurate and reliable, if there is any point which is of particular interest to you, please contact the office and we will be pleased to confirm the position for you. We have not personally tested any apparatus, equipment, fixtures, fittings or services and cannot verify they are in working order or fit for their purposes. Nothing in these particulars is intended to indicate that carpets or curtains, furnishings or fittings, electrical goods (whether wired or not). Gas fires or light fittings or any other fixtures not expressly included form part of the property offered for sale. This computer generated Floorplan, if applicable, is intended as a general guide to the layout and design of the property. It is not to scale and should not be relied upon for dimensions. Tenure: We cannot confirm the tenure of the property as we have not had access to the legal documents. The buyer is advised to obtain verification from their solicitor or surveyor.

Peter Alan Limited is registered in England and Wales under company number 2073153, Registered Office is Cumbria House, 16-20 Hockliffe Street, Leighton Buzzard, Bedfordshire, LU7 1GN. VAT Registration Number is 500 2481 05. For activities relating to regulated mortgages and non-investment insurance contracts, Peter Alan Limited is an appointed representative of Connells Limited which is authorised and regulated by the Financial Conduct Authority. Connells Limited's Financial Services Register number is 302221. Most buy-to-let

