



Guide Price
£190,000

**Share of
Freehold**

1x 🛏️ 1x 🚿 1x 🚗

**Stanhope Road, Deal,
Kent, CT14**

OVER 60?

Secure this property
for up to **59% less!**

Wards
Helping you move forwards



Main features

- Ground floor flat with private courtyard
- Minutes to the beach, town centre and train station
- Potential to acquire the upper flat a great investment
- Large room dimensions

Accommodation

SPLIT LEVEL GROUND FLOOR

Lounge : 15'5 x 15'0 (4.70m x 4.58m)

Hallway

Bedroom : 16'1 x 16'1 (4.91m x 4.91m)

Kitchen: 13'2 x 10'5 (4.02m x 3.18m)

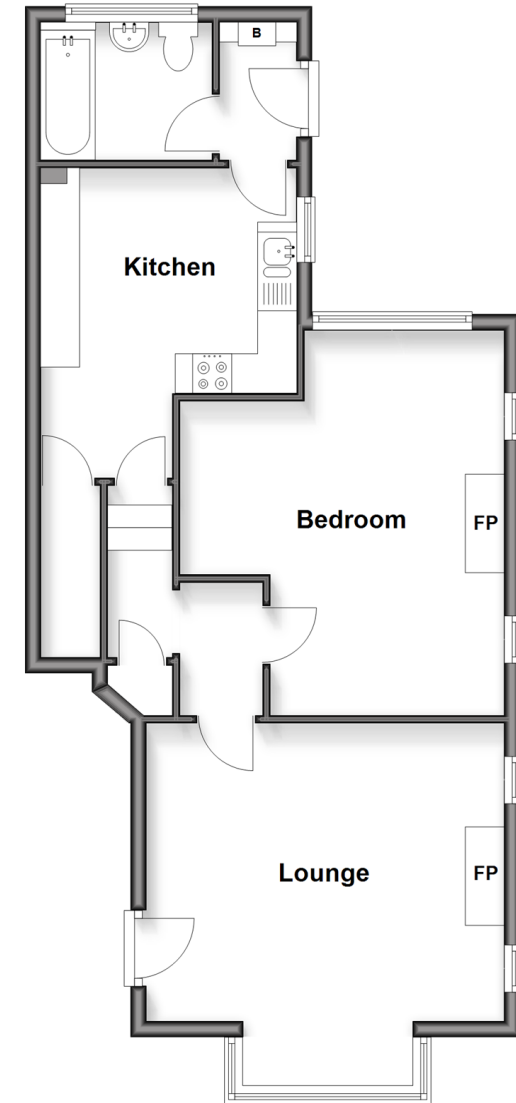
Bathroom

OUTSIDE

Courtyard garden

Split Level Ground Floor

Approx. 59.8 sq. metres (643.8 sq. feet)



Call Deal - 01304 361420 ■ wardsof Kent.co.uk

- Legal advice should be taken to verify fixtures/fittings, planning, alterations and/or lease details
- Appliances & services are untested, dimensions are approximate and floor plans are not to scale
- Through a Homewise Home For Life Plan people aged 60+ can secure this property for up to 59% less, by purchasing a Lifetime Lease



10635633/20260107/LB1/EP