



Flat 5

Leam Terrace | | Leamington Spa | CV31 IBQ

£1,100 Per month



KINGSWAY
ESTATE AGENTS

Flat 5

Leam Terrace |

Leamington Spa | CV31 1BQ

£1,100 Per month

Kingsway Estate Agents are delighted to present this recently redecorated one-bedroom ground floor apartment, ideally located within a five-minute walk of Leamington Town Centre.

The accommodation briefly comprises a spacious living room, fitted kitchen, double bedroom, and a well-appointed bathroom. The property also benefits from ample storage throughout and access to a garden area.

Ideally suited to a single occupant or professional couple, this apartment further benefits from off-road parking to the rear of the property.

EPC Rating: C

- Ground Floor Apartment
- Town Centre Location
- Recently Redecorated
- EPC Rating: C

Living Room

11'6" x 14'10" (3.52m x 4.53m)

Kitchen

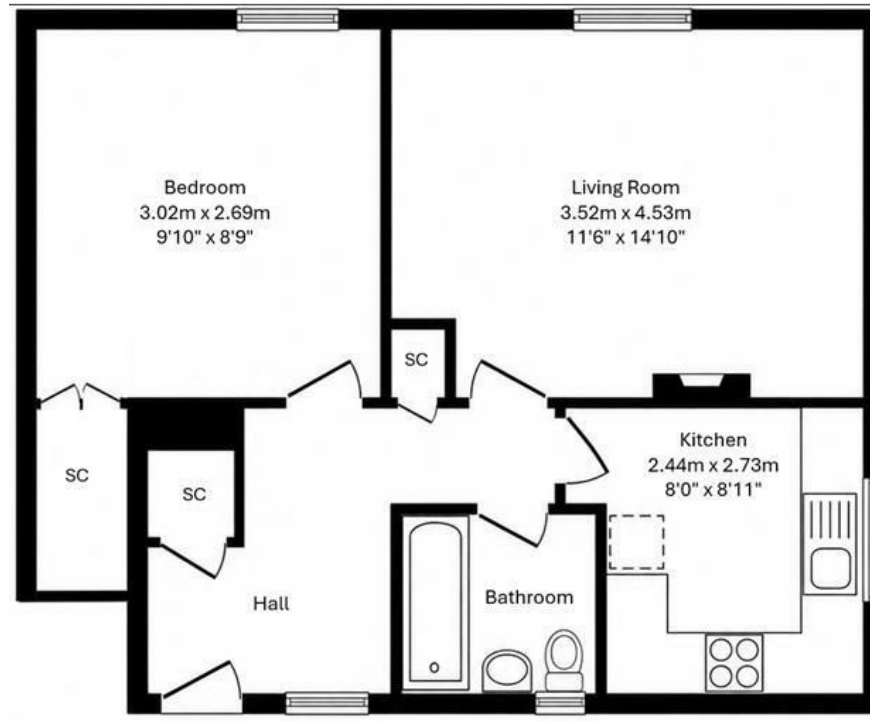
8'0" x 8'11" (2.44m x 2.73m)

Bedroom

9'10" x 8'9" (3.02m x 2.69m)



Ground Floor



Energy Efficiency Rating		Current	Potential
<i>Very energy efficient - lower running costs</i>			
(92 plus) A			
(81-91) B			
(69-80) C			
(55-68) D			
(39-54) E			
(21-38) F			
(1-20) G			
<i>Not energy efficient - higher running costs</i>			
England & Wales		EU Directive 2002/91/EC	

01926 760024

info@kingswayestateagents.co.uk

kingswayestateagents.co.uk



The floor Plan is for illustration purposes only and may not be representative of the property and is not to scale