



**Guide Price**  
**£450,000**

**Freehold**

3x  2x  2x 

**Willement Road,  
Faversham, Kent, ME13**

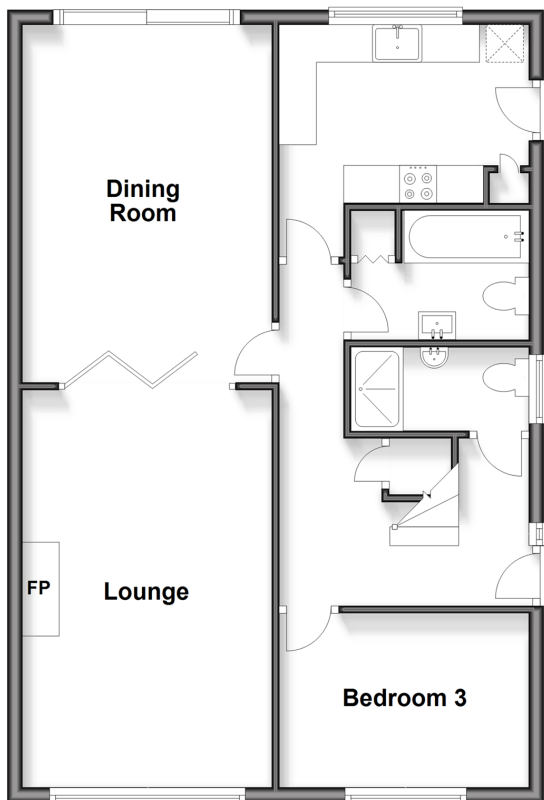
**OVER 60?**

Secure this property  
for up to **59% less!**

*Wards*  
Helping you move forwards

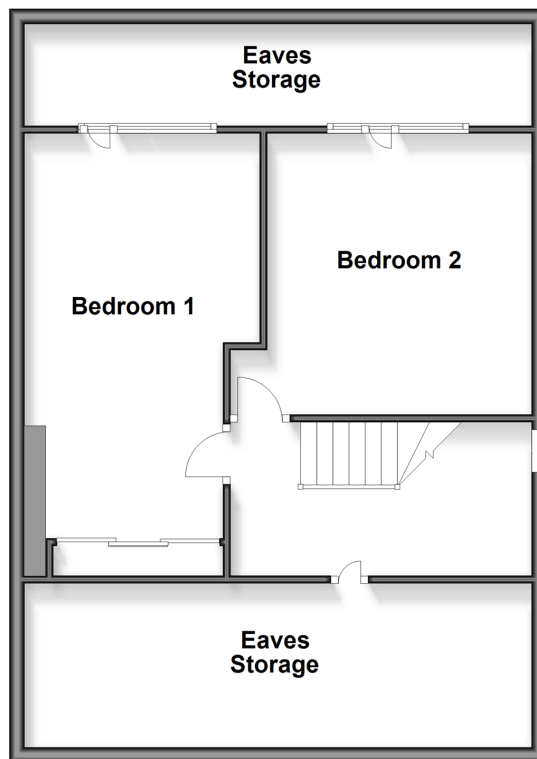
### Ground Floor

Approx. 69.2 sq. metres (745.3 sq. feet)



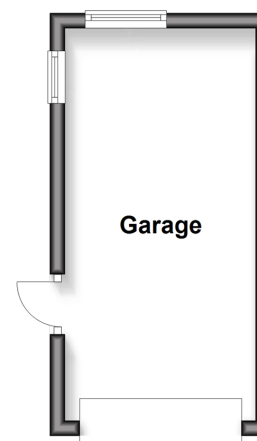
### First Floor

Approx. 65.7 sq. metres (706.9 sq. feet)



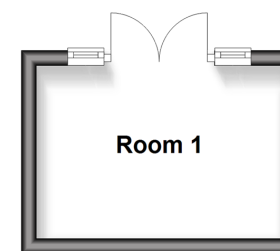
### Outbuilding 1

Approx. 13.4 sq. metres (144.1 sq. feet)



### Outbuilding 2

Approx. 7.6 sq. metres (82.0 sq. feet)



## Accommodation

### GROUND FLOOR

Entrance Hall

Lounge: 17'6 x 10'11 (5.34m x 3.33m)

Dining Room: 15'10 x 10'11 (4.83m x 3.33m)

Kitchen: 11'0 x 8'1 (3.36m x 2.47m)

Bedroom 3: 11'0 x 7'10 (3.36m x 2.39m)

Bathroom

Shower Room

### FIRST FLOOR

Landing

Bedroom 1: 19'2 x 10'7 (5.85m x 3.23m)

Bedroom 2: 13'4 x 12'2 (4.07m x 3.71m)

Eaves Storage

### OUTBUILDING 1

Garage

### OUTBUILDING 2

Room 1: 10'10 x 7'6 (3.30m x 2.29m)

### OUTSIDE

Front and Rear Gardens





## Main features

- Deceptively spacious chalet style bungalow
- Highly prized location with fabulous views to the rear
- Well maintained throughout with modern decor
- Splendid Garden room suitable for many uses
- Garage and parking for additional cars



### Nearest Schools

Primary Schools: Bysing Wood Primary 0.2 miles,  
Ethelbert Road Infant School 0.4 miles

Secondary Schools: The Abbey School 0.7 miles, Queen  
Elizabeth's Grammar School 0.7 miles



### Transport Information

Train Stations: Faversham 0.6 miles, Teynham 3.2 miles,  
Selling 3.8 miles



### Address

Willement Road, Faversham, Kent, ME13



### Directions

For directions to this property please contact us.





**Wards**  
Helping you move forwards

Call Faversham Branch 01795 535517 ■ [wardsofkent.co.uk](http://wardsofkent.co.uk)



■ Legal advice should be taken to verify fixtures/fittings, planning, alterations and/or lease details ■ Appliances & services are untested, dimensions are approximate and floor plans are not to scale  
■ Through a Homewise Home For Life Plan people aged 60+ can secure this property for up to 50% less, by purchasing a Lifetime Lease.



10832491/20251110/PJ/PJ