



35 Stephen Street, Redfield
£369,995



35 Stephen Street

Redfield, Bristol

Council Tax band: TBD

Tenure: Freehold

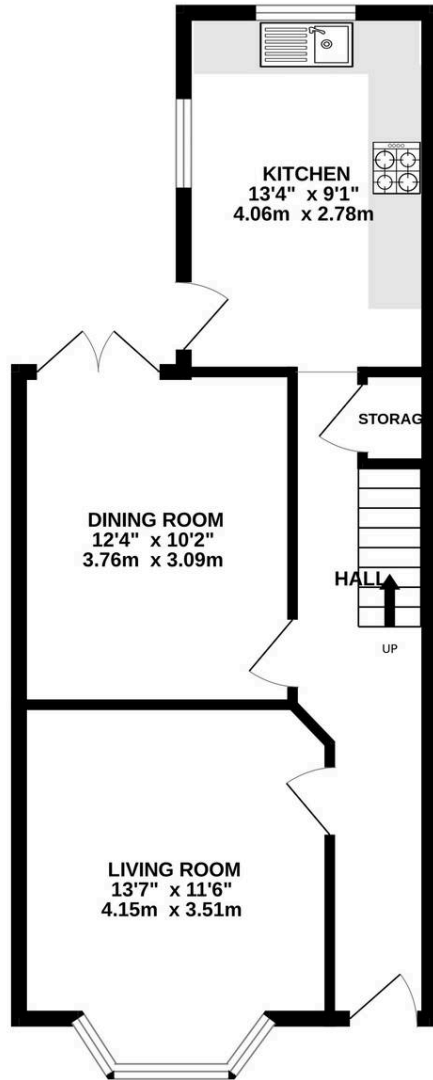
EPC Energy Efficiency Rating: C

EPC Environmental Impact Rating: D

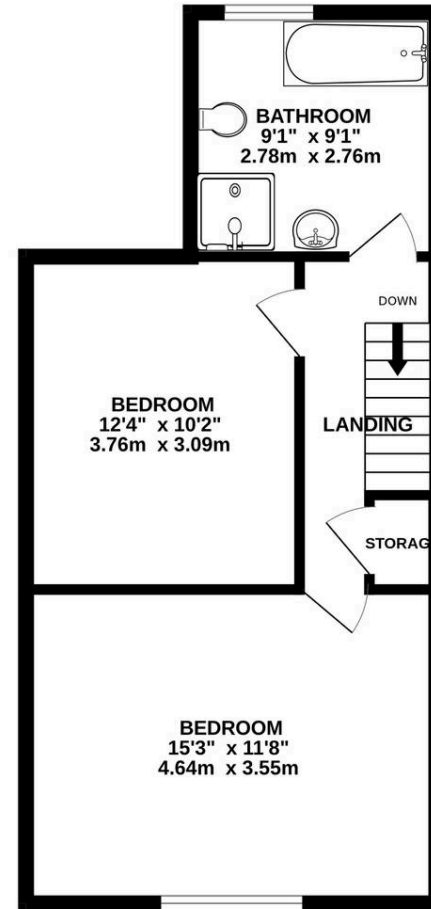
- Beautifully Presented Victorian Terraced House
- Great Location
- Lounge With Woodburning Stove
- Two Reception Rooms
- Spacious Fitted Kitchen
- Sunny West Facing Garden
- Two Double Bedrooms
- Four Piece Family Bathroom



GROUND FLOOR
498 sq.ft. (46.3 sq.m.) approx.



1ST FLOOR
448 sq.ft. (41.6 sq.m.) approx.



TOTAL FLOOR AREA : 946 sq.ft. (87.9 sq.m.) approx.

Whilst every attempt has been made to ensure the accuracy of the floorplan contained here, measurements of doors, windows, rooms and any other items are approximate and no responsibility is taken for any error, omission or mis-statement. This plan is for illustrative purposes only and should be used as such by any prospective purchaser. The services, systems and appliances shown have not been tested and no guarantee as to their operability or efficiency can be given.
Made with Metropix ©2026