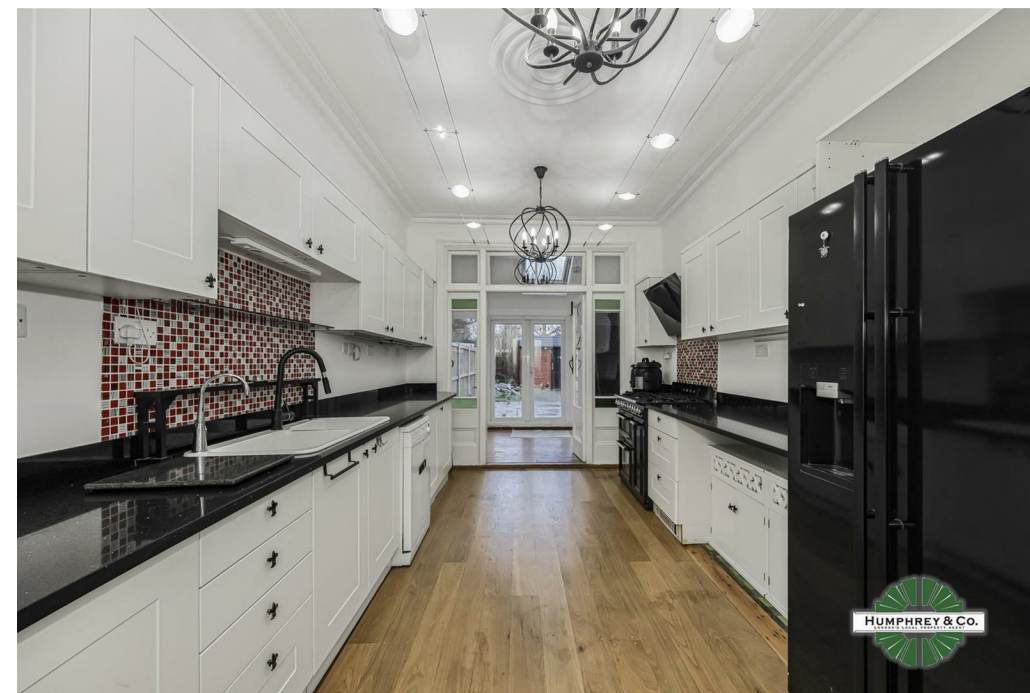


Essex Road

Approximate Gross Internal Area
 Cellar = 8.7 sq m / 94 sq ft
 Ground Floor = 74.2 sq m / 799 sq ft
 Outbuilding = 9.4 sq m / 102 sq ft
 Total = 92.3 sq m / 995sq ft

This plan is for layout guidance only. Not drawn to scale unless stated. Windows and door openings are approximate. Whilst every care is taken in the preparation of this plan, please check all dimensions, shapes and compass bearings before making any decisions reliant upon them.

powered by:
THE360IMAGE
www.the360image.co.uk



Directions

Contact

125 Hoe Street
 London
 E17 4RX

E: sales@hcolondon.com

T: 02085 210 755

hcolondon.com



1 Bed
 Flat
 located in



4A Essex Road

London E10 6HP

Price Guide £415,000

Leasehold



LEASEHOLD ONE BEDROOM FLAT --- NEW LEASE --- CHAIN FREE & VACANT POSSESSION --- APPROX. 995 SQ FT TOTAL SPACE --- BASEMENT /CELLAR --- EXCELLENT TRANSPORT LINKS ---
GUIDE PRICE £415,000 -£430,000

To the rear is a well-configured kitchen/dining area, fully equipped and included within the sale, featuring:

- SMEG six-burner range cooker with wok burner
- Samsung American-style fridge freezer with ice maker and water dispenser
- Hotpoint washer/dryer
- Hyco Zen boiling water tap
- Integrated Insinkerator food waste disposal
- Practical under-cabinet drawer storage



Energy Efficiency Rating		Current	Potential
Very energy efficient - lower running costs			
(92 plus) A			
(81-91) B			
(69-80) C			
(55-68) D			
(39-54) E			
(21-38) F			
(1-20) G			
Not energy efficient - higher running costs			
England & Wales		EU Directive 2002/91/EC	

