



GROUP 1

31 Draycott Avenue | | LONDON | SW3 3BS

£3,810 Per month

ESON2
REAL ESTATE

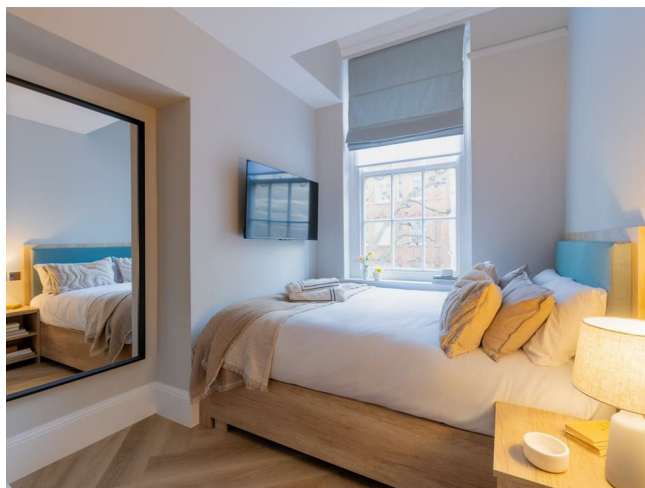
Key features

- Open-Plan Living
- High-End Kitchen
- Luxurious Bathroom
- Smart Design
- On-site Gym
- Workspace Facilities
- 24/7 Security

Description

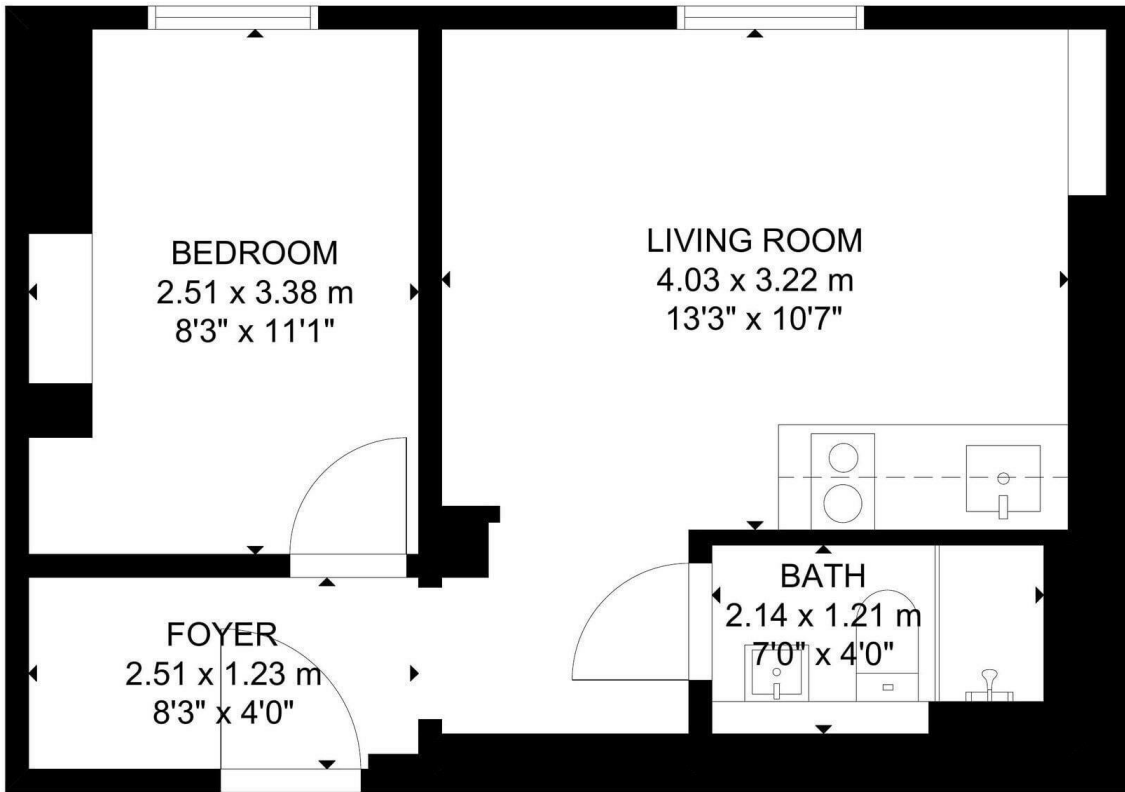
A newly renovated one-bedroom apartment in Chelsea's SW3 featuring a modern kitchen with premium appliances, wood flooring, and a stylish bathroom with a raised base shower. Residents benefit from 24-hour gym access, secure entry, and CCTV. Ideally located in the Draycott area, close to shops, cafés, transport links, and green spaces.

Directions



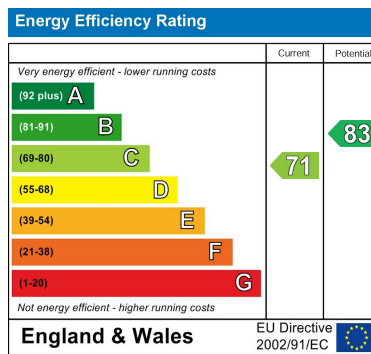
A beautifully refurbished one-bedroom apartment situated in the sought-after Draycott area of Chelsea SW3, combining contemporary design with city living.

Floor plans



THIRD FLOOR

GROSS INTERNAL AREA
 TOTAL: 30 m²/324 sq ft
 GROUND FLOOR: 30 m²/324 sq ft
 SIZE AND DIMENSIONS ARE APPROXIMATE, ACTUAL MAY VARY.



Council Tax Band EPC Rating C



301 Michelin House 81 Fulham road
 London
 Greater London
 SW3 6RD
 07920 257649
 fayeel@eson2.co.uk
 www.eson2.co.uk