

## 3a Chobham Road, London – E15 1LU

£300,000 Share of Freehold

Guide Price: £300,000–£325,000 • Unique one-bedroom Victorian basement flat • Front and rear private garden spaces • Share of freehold with approx. 995 years remaining • Private entrance and well-presented interiors • Open-plan living room with fitted kitchen • Separate utility room and full bathroom • Close to Stratford Station, Maryland (Elizabeth Line) • Near Wanstead Flats and Olympic Park



**HIGHCASTLE  
ESTATES**

**020 3026 4420**  
**sales@hceuk.com**



GUIDE PRICE £300,000–£325,000. Unique one-bed Victorian basement flat with front and rear gardens, share of freehold and ready to move into.

Close to Stratford, Maryland and Wanstead Flats.

Council Tax band: B

Tenure: Share of Freehold

EPC Energy Efficiency Rating: C

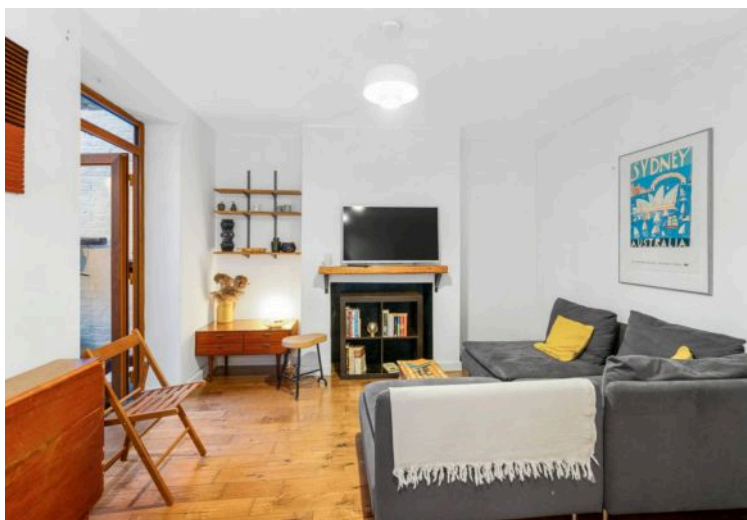
EPC Environmental Impact Rating: C



- Guide Price: £300,000–£325,000
- Unique one-bedroom Victorian basement flat
- Front and rear private garden spaces
- Share of freehold with approx. 995 years remaining
- Private entrance and well-presented interiors
- Open-plan living room with fitted kitchen
- Separate utility room and full bathroom
- Close to Stratford Station, Maryland (Elizabeth Line)
- Near Wanstead Flats and Olympic Park









Disclaimer : Floorplan measurements are approximate and are for illustrative purposes only. While we do not doubt the floorplan accuracy and completeness, you or your advisors should conduct a careful, independent investigation of the property in respect of monetary valuation.

**Maison  
VUE**

You can include any text here. The text can be modified upon generating your brochure.