



HOMES BY VICTORIA
ESTATE AGENCY

Edgefield Close, Redditch, B98 7WB

Offers Over £470,000

🛏 4 🚿 2 🚗 1



Welcome to Edgefield Close, Redditch, a truly standout four-bedroom detached residence that perfectly combines elegant styling, generous proportions and a calm, luxurious feel throughout. This striking double-fronted family home instantly captures attention from the outside and continues to impress as you step inside, revealing beautifully presented interiors designed with modern family living in mind.

[homesbyvictoria.co.uk](https://www.homesbyvictoria.co.uk)

victoria@homesbyvictoria | 07833 136521

FOR M HOMES MIDLANDS LIMITED trading as Homes By Victoria Company Number: 13688840 VAT no: 470190115

ico.

The Property
Ombudsman

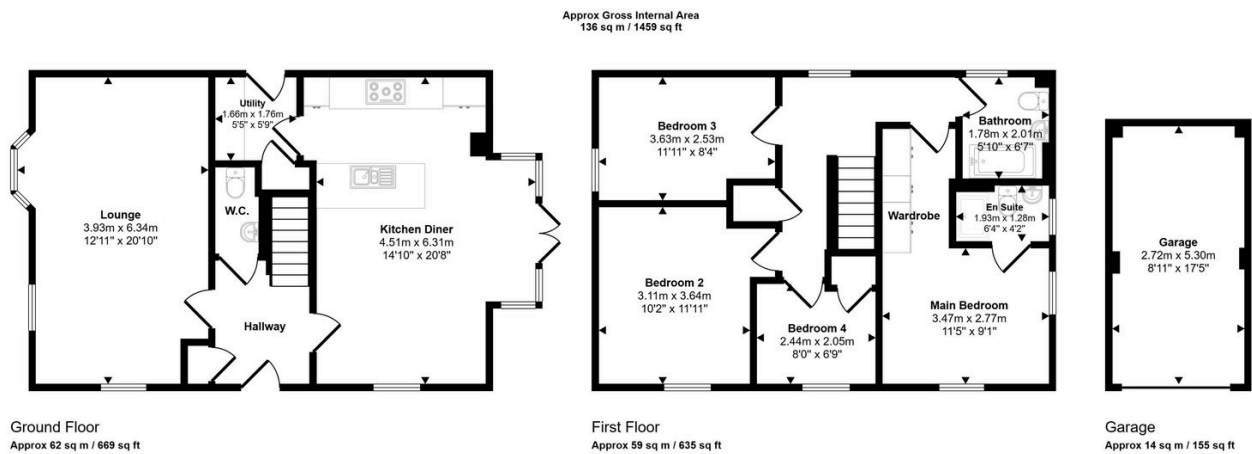


HOMES BY VICTORIA
ESTATE AGENCY



Key Features

- LOCATED IN THE SOUGHT AFTER AREA OF WIREHILL
- STUNNING DETACHED FAMILY HOME
- MODERN KITCHEN DINER
- THREE FURTHER WELL PROPORTIONED BEDROOMS
- DELIGHTFUL REAR GARDEN
- BEAUTIFULLY POSITIONED IN THE CUL DE SAC
- GENEROUS AND LIGHT FILLED LOUNGE
- MASTER BEDROOM WITH EN-SUITE SHOWER ROOM
- FAMILY BATHROOM
- OFF ROAD PARKING AND SINGLE GARAGE



This floorplan is only for illustrative purposes and is not to scale. Measurements of rooms, doors, windows, and any items are approximate and no responsibility is taken for any error, omission or mis-statement. Icons of items such as bathroom suites are representations only and may not look like the real items. Made with Made Snappy 360.