



**3 Fawley Close, Maidenhead SL6 7UP**

**welcome to**

**3 Fawley Close, Maidenhead**

A well-presented three bedroom semi-detached home in a popular cul-de-sac. Conveniently located within easy reach of the town centre, mainline station and a range of local shops, own drive to detached garage and no chain.



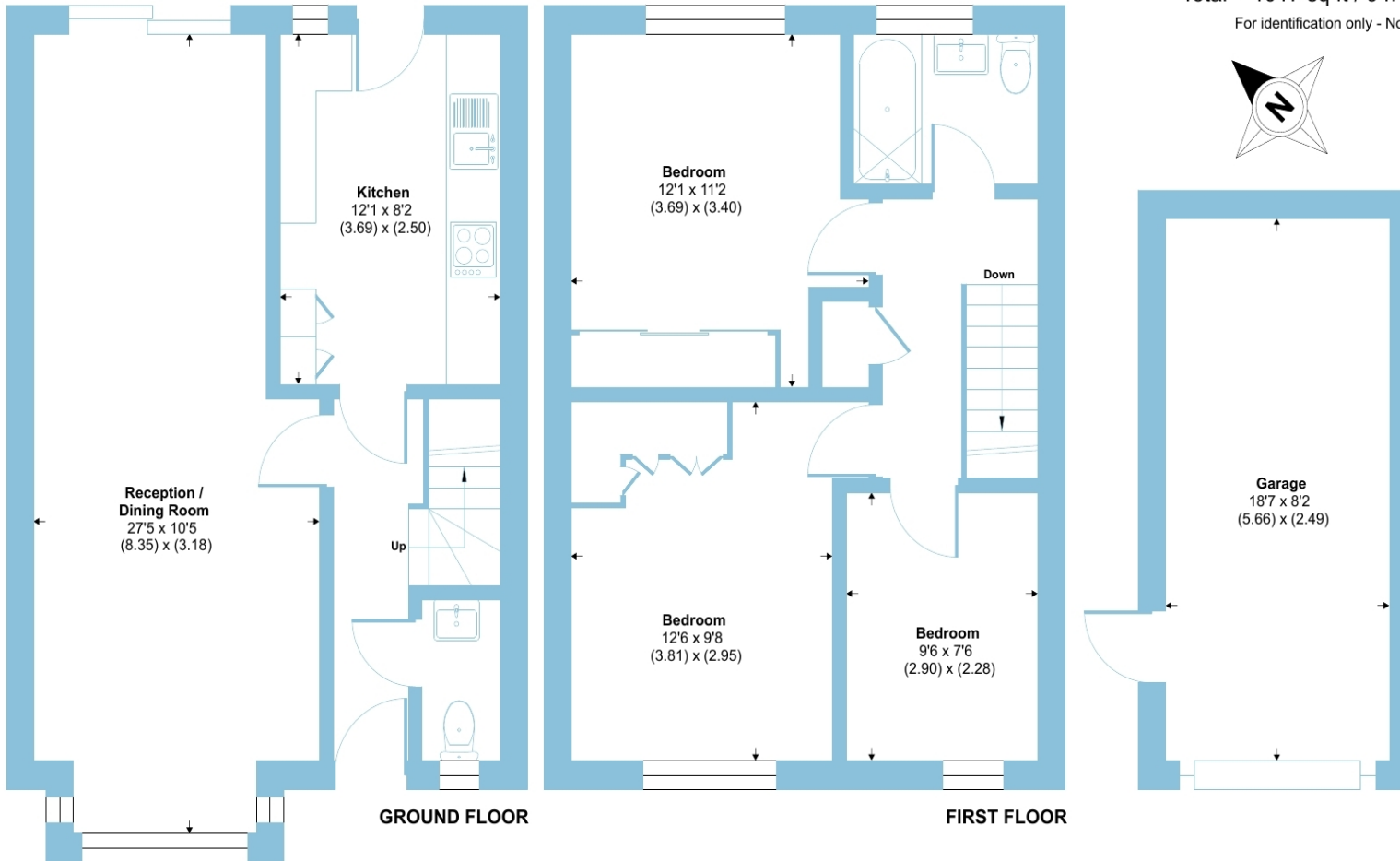
# Fawley Close, Maidenhead, SL6

Approximate Area = 865 sq ft / 80.3 sq m

Garage = 152 sq ft / 14.1 sq m

Total = 1017 sq ft / 94.4 sq m

For identification only - Not to scale



A well-presented three bedroom semi-detached home offering generous accommodation, pleasantly positioned within a popular cul-de-sac. The property is conveniently located within easy reach of the town centre, mainline station and a range of local shops, making it ideal for commuters and families alike.

The ground floor features a spacious and welcoming hallway, cloakroom, a well-appointed fitted kitchen and the interconnecting living/dining room provides an excellent space for both everyday living and entertaining, with direct access to the rear garden allowing for a seamless indoor-outdoor flow.

Upstairs, the spacious principal bedroom benefits from fitted wardrobes, complemented by a second double bedroom, a good-size third bedroom and a modern family bathroom finished to a high standard.

Outside, the well-tended rear garden offers a good degree of seclusion and privacy, providing an attractive space to relax or entertain.

To the front, ample driveway parking leads to a detached garage, adding further convenience. The property also offers scope to extend to the side, subject to the usual planning consents. Importantly, this attractive home is offered with the significant advantage of no onward chain, making for a straightforward purchase.

welcome to

## 3 Fawley Close, Maidenhead

- WELL PRESENTED SEMI-DETACHED HOME
- THREE BEDROOMS
- PRIVATE REAR GARDEN
- AMPLE DRIVEWAY PARKING
- DETACHED GARAGE
- SCOPE TO EXTEND, STPP
- EASY ACCESS TO TOWN CENTRE AND LOCAL SCHOOLS
- NO ONWARD CHAIN

Tenure: Freehold EPC Rating: C

Council Tax Band: D

offers in excess of

**£530,000**



Please note the marker reflects the postcode not the actual property

check out more properties at [rogerplatt.co.uk](http://rogerplatt.co.uk)



Property Ref:  
MHD123757 - 0004

1. MONEY LAUNDERING REGULATIONS Intending purchasers will be asked to produce identification documentation at a later stage and we would ask for your co-operation in order that there is no delay in agreeing the sale. 2. These particulars do not constitute part or all of an offer or contract. 3. The measurements indicated are supplied for guidance only and as such must be considered incorrect. Potential buyers are advised to recheck measurements before committing to any expense. 4. We have not tested any apparatus, equipment, fixtures or services and it is in the buyers interest to check the working condition of any appliances. 5. Where an EPC, or a Home Report (Scotland only) is held for this property, it is available for inspection at the branch by appointment. If you require a printed version of a Home Report, you will need to pay a reasonable production charge reflecting printing and other costs. 6. We are not able to offer an opinion either written or verbal on the content of these reports and this must be obtained from your legal representative. 7. Whilst we take care in preparing these reports, a buyer should ensure that his/her legal representative confirms as soon as possible all matters relating to title including the extent and boundaries of the property and other important matters before exchange of contracts.

Roger Platt is a trading name of Sequence (UK) Limited which is registered in England and Wales under company number 4268443, Registered Office is Cumbria House, 16-20 Hockliffe Street, Leighton Buzzard, Bedfordshire, LU7 1GN. VAT Registration Number is 500 2481 05.

roger platt



**01628 773333**



Maidenhead@rogerplatt.co.uk



25-29 Queen Street, MAIDENHEAD, Berkshire,  
SL6 1NB



**rogerplatt.co.uk**