



Canonbury Road | | Enfield | EN1 3LW

Offers Over £450,000



## Key features

- OLDER STYLE MID TERRACE HOME
- TWO WELL PROPORTIONED BEDROOMS
- BRIGHT & AIRY RECEPTION-DINING ROOM
- MODERN FITTED KITCHEN
- FIRST FLOOR SHOWER/WC
- PAVED REAR GARDEN WITH STORAGE SHED
- GATED FRONT GARDEN
- CLOSE TO LOCAL SHOPPING PARADES & TRANSPORT LINKS
- GREEN SPACES AND GOOD SCHOOLS CLOSE BY
- WITHIN EASY REACH OF ENFIELD TOWN, MOTORWAY LINKS, SPORTS & LEISURE FACILITIES

## Description

We are delighted to offer, in the charming Canonbury Road in Enfield, an attractive older style, mid-terrace house, which offers a perfect blend of character and modern living. With two well-proportioned bedrooms, this property is ideal for small families, couples, or individuals seeking a comfortable home. This attractive property is well maintained but also offers the chance to elevate to your own style.

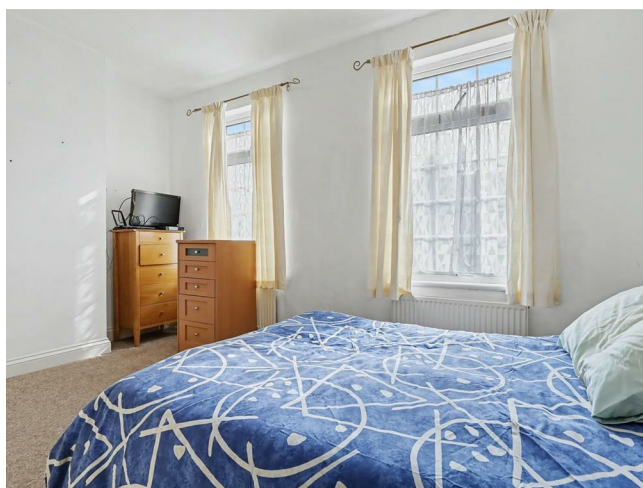
Upon entering, you are welcomed into a spacious reception-dining room with feature fireplace, which serves as the heart of the home. This large area is perfect for entertaining guests or enjoying quiet evenings in. The modern fitted kitchen is conveniently located, providing ample space for culinary creations. The first floor features a well-appointed shower room with a WC, ensuring convenience and privacy for all residents.

The house is thoughtfully designed and offers versatility for everyday living; it is complemented by a paved garden with storage shed and if you are creative, there is a wonderful opportunity waiting, to enhance the outside area.

The property is situated in a desirable location, offering easy access to local amenities in Lancaster Road, schools, parks, and transport links, making it an excellent choice for those who appreciate both tranquillity and connectivity. Motorway links and Enfield Town Centre are also within easy reach.

This characterful home on Canonbury Road is a wonderful opportunity for anyone looking to settle in a lively community while enjoying the comforts of well-designed living space. Do not miss the chance to make this charming house your new home.

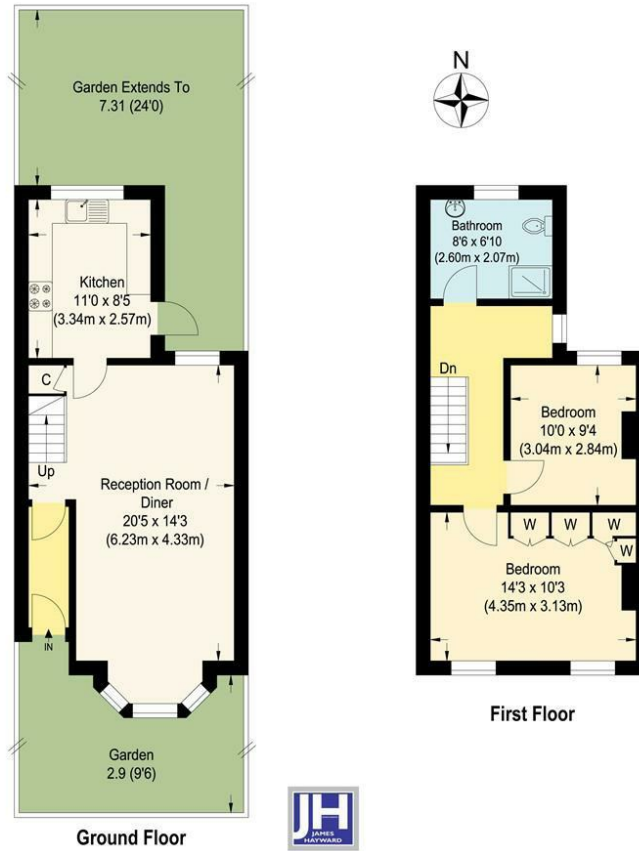
## Directions



A charming two bedroom older style house with some lovely original features and adaptable living space. The property offers a first floor shower room, modern fitted kitchen, bright and airy reception-dining room with feature fireplace and the opportunity to still enhance to your own vision. The rear garden is paved with a storage shed . Location wise, this very appealing property is within walking distance of local amenities in Lancaster road, transport links, schools and green spaces. Enfield Town is close by and motorway links are easily accessed.

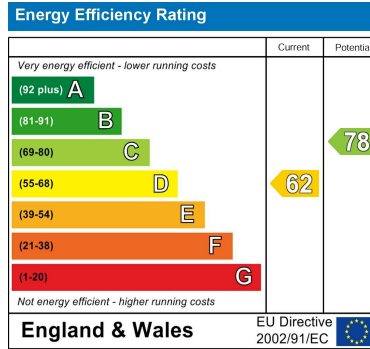


# Floor plans



## Canonbury Road, EN1

Approximate Gross Internal Floor Area : 72.80 sq m / 783.61 sq ft  
 Illustration for identification purposes only, measurements are approximate, not to scale.



181 Chase Side  
 Enfield  
 Greater London  
 EN2 0PT  
 020 8367 4000  
 sales@james-hayward.com  
 James-Hayward.com