



## Stamford Brook Road - First Floor Flat, W6 OXH

A nicely presented two-bedroomed apartment which has undergone refurbishment, situated in the very popular Stamford Brook area within a short walk of local shopping facilities, further afield are the more extensive shopping and restaurant facilities of Chiswick High Road, Askew Road, Goldhawk Road & King Street Hammersmith. The accommodation provides: freshly painted and carpeted throughout, two bedrooms (one double, one single), fitted kitchen, new tiled shower room, cloakroom, spacious reception room, gas fired central heating, CPZ parking. Local transport links include Stamford Brook & Turnham Green tube stations. Numerous local bus routes with convenient vehicular access via A4/M4 central London, Heathrow & The West. Hammersmith & Fulham Band D. EPC: D. The property is available now and is offered part-furnished (as shown)

- Recently refurbished
- Great for transport links
- Freshly decorated and new carpets
- Fitted kitchen with skylight
- Double & single bedroom/study area
- New tiled shower room
- Separate cloakroom
- Gas fired central heating
- Offered part furnished
- Available now

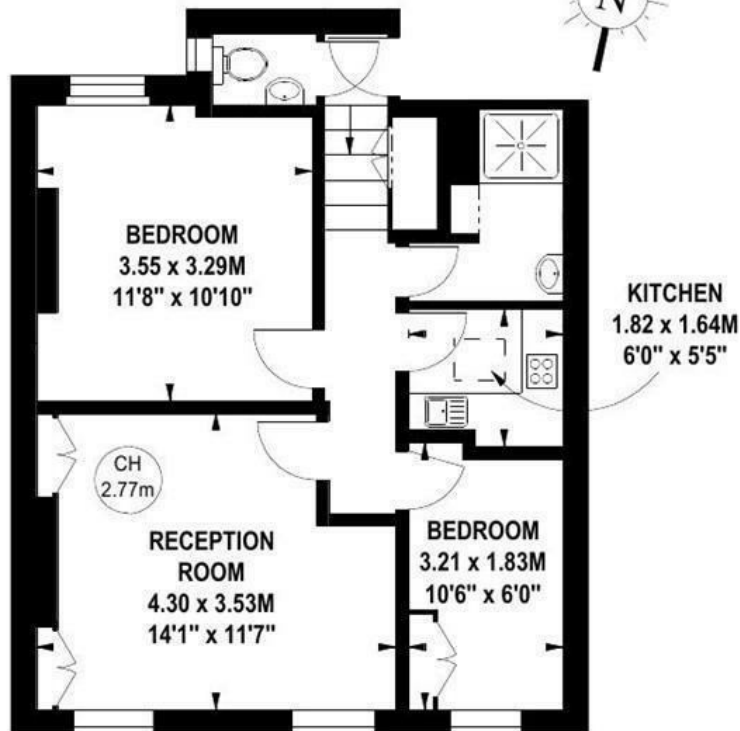
**£1,750 PCM**

# Stamford Brook Road, W6

Approximate gross internal area

47.29 sq m / 509 sq ft

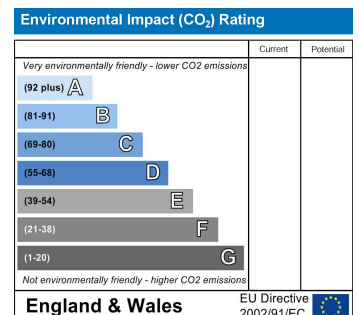
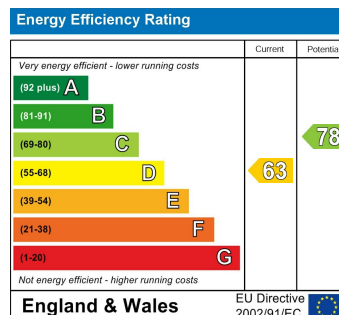
Key :  
CH - Ceiling Height



## First Floor

The floor plan is not to scale and measurements and areas shown are approximate and therefore should be used for illustrative purposes only. The plan has been prepared in accordance with the RICS code of Measuring Practice and whilst we have confidence in the information produced, it must not be relied on. If there is any aspect of particular importance, you should carry out or commission your own inspection of the property.

Copyright of FeaturePRO.



5-7 Turnham Green Terrace, Chiswick, London, W4 1RG

Tel 020 8747 8800

E-mail [lettings@whitmanandco.com](mailto:lettings@whitmanandco.com)

Website [www.whitmanandco.com](http://www.whitmanandco.com)

[PrimeLocation.com](http://PrimeLocation.com)

[Zoopla.co.uk](http://Zoopla.co.uk)

[rightmove](http://rightmove.com)

[OnTheMarket.com](http://OnTheMarket.com)

MISREPRESENTATION ACT 1967

Whitman & Co. for themselves and for the vendors give notice that these particulars do not constitute any part of, an offer of contract. All statements contained in these particulars are made without responsibility on the part of Whitman & Co. or the vendor. None of the statements contained in these particulars is to be relied upon as statements or representations of facts. Any intending purchaser must satisfy himself by inspection or otherwise as to the correctness of each of the statements contained in these particulars. The vendor does not make or give, and neither Whitman & Co. or any person in their employment has any authority to make or give, any representation or warranty whatever in relation to the property.