



The Causeway
Bristol BS36 2PD

Price:
£1,600 PCM

Property Features

- Semi Detached Family Home
- 4 Bedrooms
- Lounge & Playroom
- Bedroom 1 with En-suite
- Family Bathroom
- Unfurnished
- Pets Considered
- Off Street Parking
- Available Immediately



Full Description

ENTRANCE HALL

CLOAKROOM

PLAY ROOM
9'4" x 8'5"

LOUNGE AREA
16'10" x 11'9"

KITCHEN/DINING ROOM
22'4" x 9'10"

CONSERVATORY
11'0" x 8'8"

LANDING

BEDROOM 1
13'1" x 8'10"

ENSUITE SHOWER ROOM

BEDROOM 2
12'2" x 9'5"

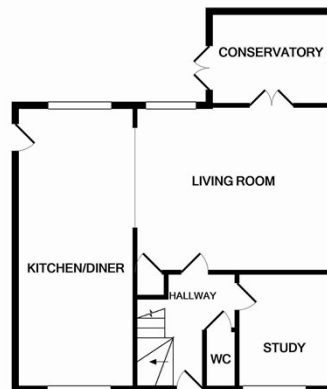
BEDROOM 3
9'6" x 8'0"

BEDROOM 4
9'6" x 7'10"

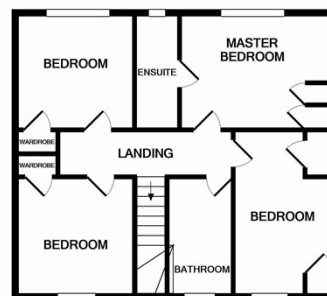
BATHROOM

FRONT GARDEN

REAR GARDEN



GROUND FLOOR



1ST FLOOR

Measurements are approximate. Not to scale. Illustrative purposes only
Made with Metropix ©2021

Agents Note: Whilst every care has been taken to prepare these sales particulars, they are for guidance purposes only. All measurements are approximate are for general guidance purposes only and whilst every care has been taken to ensure their accuracy, they should not be relied upon and potential buyers are advised to recheck the measurements

4 Flaxpits Lane
Winterbourne
Bristol
BS36 1JX

www.aj-homes.co.uk
info@aj-homes.co.uk
01454 252140