



Guide Price
£340,000

Freehold

4x  1x  1x 

**Stonebridge Way,
Faversham, Kent, ME13**

Wards
Helping you move forwards



Main features

- Good sized family home offering well planned living space
- Close to primary and secondary schools
- Walking distance to town centre
- Driveway and parking
- Duck pond close by, perfect for a stroll with young children

Accommodation

GROUND FLOOR

Entrance Hall

Lounge: 20'4 x 11'7 (6.20m x 3.53m)

Kitchen: 9'3 x 7'11 (2.82m x 2.41m)

Half Landing

Separate Toilet

SPLIT LEVEL FIRST FLOOR

Landing

Bedroom 1: 17'11 x 9'6 (5.46m x 2.90m)

Bedroom 2: 11'3 x 10'2 (3.43m x 3.10m)

Bedroom 3: 9'11 x 8'1 (3.02m x 2.47m)

Bedroom 4: 8'2 x 7'4 (2.49m x 2.24m)

Bathroom

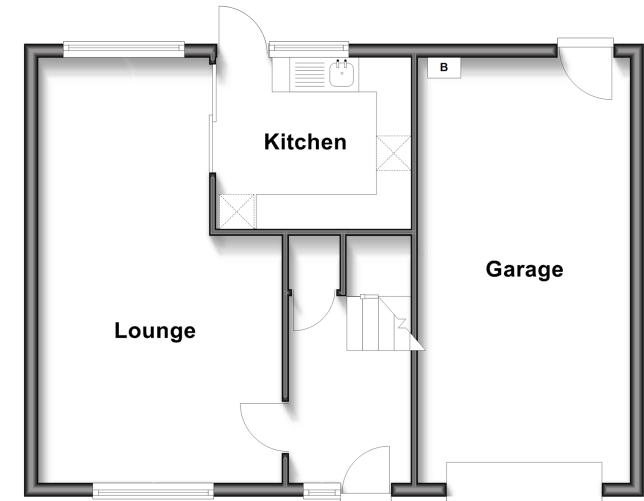
OUTSIDE

Front and Rear Gardens

Garage: 20'0 x 10'0 (6.10m x 3.05m)

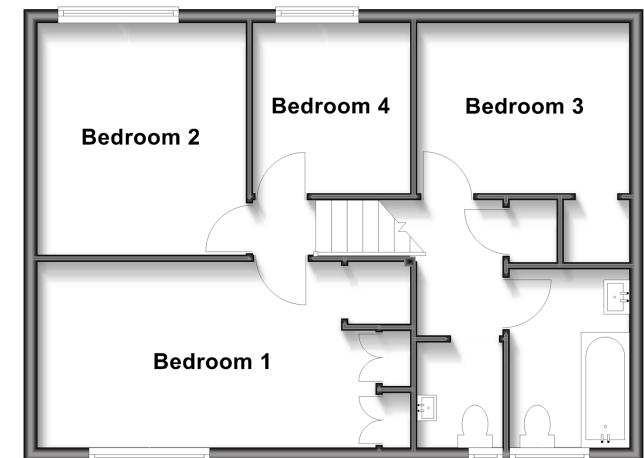
Ground Floor

Approx. 52.9 sq. metres (569.8 sq. feet)



Split Level First Floor

Approx. 52.9 sq. metres (569.8 sq. feet)



Call Faversham - 01795 535517 ■ wardsokent.co.uk



10832216/20260404/JB/PJ