



Guide Price
£325,000

Freehold

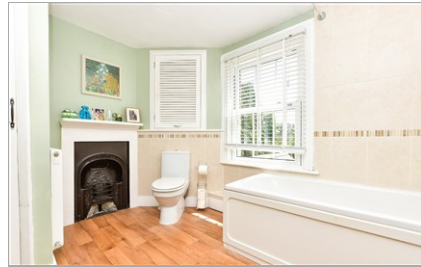
2x  1x  1x 

**Southview Cottages,
Newchapel Road,
Lingfield, Surrey, RH7**

OVER 60?

Secure this property
for up to **59% less!**

cubitt&west
Helping you move forwards



Main features

- Charming terraced cottage with character features
- Deceptively spacious
- Lovely good sized sunny garden - great for kids, pets and outdoor entertaining
- Popular village location with Primary and Independent schools and train to London
- Close to Lingfield Marriott Hotel & Spa

Accommodation

GROUND FLOOR

Lounge/Diner: 11'9 x 11'6 (3.58m x 3.51m)
Kitchen: 10'3 x 8'6 (3.13m x 2.59m)

FIRST FLOOR

Landing
Bedroom 2: 11'6 x 8'9 (3.51m x 2.67m)
Bathroom

SECOND FLOOR

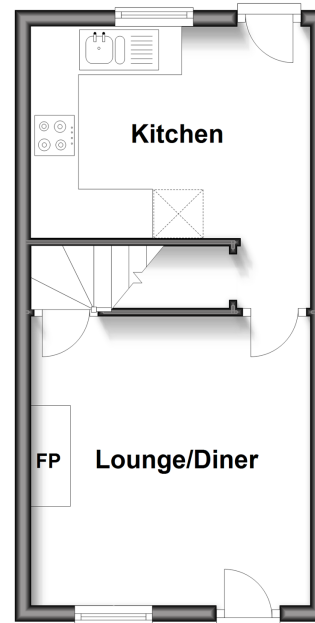
Bedroom 1: 11'6 x 11'6 (3.51m x 3.51m)
Walk-in Wardrobe

OUTSIDE

Front & Rear Garden

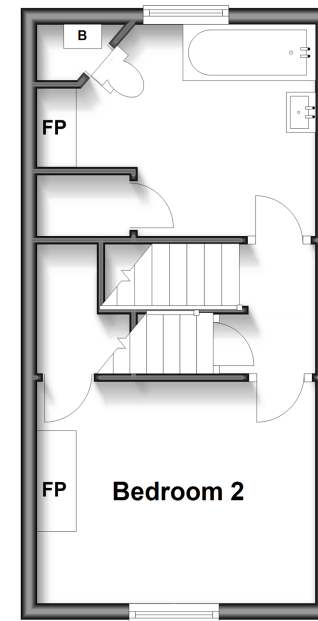
Ground Floor

Approx. 25.3 sq. metres (272.9 sq. feet)



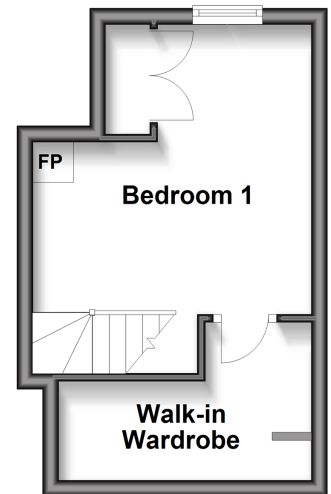
First Floor

Approx. 25.3 sq. metres (272.9 sq. feet)



Second Floor

Approx. 18.2 sq. metres (195.8 sq. feet)



Call East Grinstead - 01342 314324 ■ cubittandwest.co.uk

■ Legal advice should be taken to verify fixtures/fittings, planning, alterations and/or lease details
■ Through a Homewise Home For Life Plan people aged 60+ can secure this property for up to 50% less, by purchasing a Lifetime Lease.

■ Appliances & services are untested, dimensions are approximate and floor plans are not to scale