



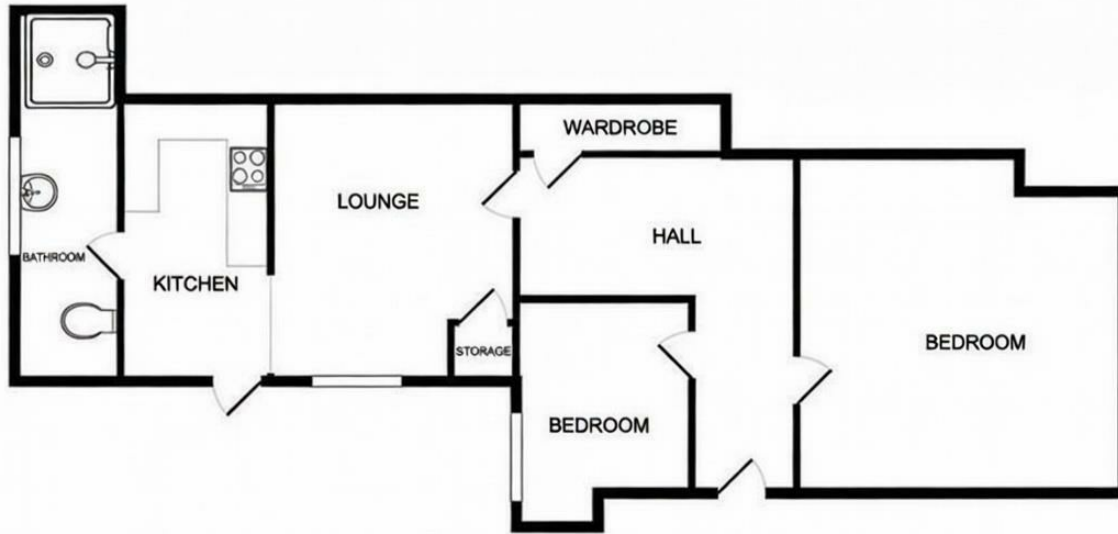
HARCOURT AVENUE

SOUTHEND-ON-SEA, SS2 6HU

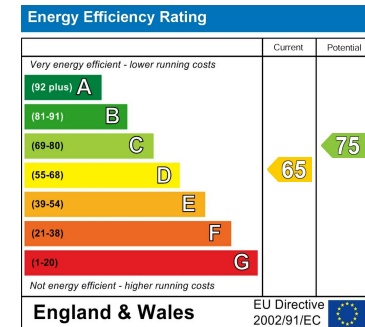
GUIDE PRICE £230,000
LEASEHOLD

* £230,000 - £250,000 * NO ONWARD CHAIN * LARGE REAR GARDEN * BEAUTIFULLY MAINTAINED
TWO BEDROOM GROUND-FLOOR FLAT, POSITIONED CENTRALLY FOR EASY ACCESS TO A WEALTH
OF TRAVEL LINKS INTO CENTRAL LONDON, SOUTHEND CITY CENTRE, PRIORY PARK AND MUCH
MORE. A WONDERFUL FIRST TIME PURCHASE OR DOWNSIZE.

RP&C.
RICKY, PLANT & CHEN-PORTER



TOTAL APPROX. FLOOR AREA 722 SQ.FT. (67.1 SQ.M.)
 Whilst every attempt has been made to ensure the accuracy of the floor plan contained here, measurements of doors, windows, rooms and any other items are approximate and no responsibility is taken for any error, omission, or mis-statement. This plan is for illustrative purposes only and should be used as such by any prospective purchaser. The services, systems and appliances shown have not been tested and no guarantee as to their operability or efficiency can be given
 Made with Metropix ©2021



Agents Note: Whilst every care has been taken to prepare these particulars, they are for guidance purposes only. All measurements are approximate and are for general guidance purposes only and whilst every care has been taken to ensure their accuracy, they should not be relied upon and potential buyers/tenants are advised to recheck the measurements

RP & C Estate Agents
 15 Nelson Street
 Southend On Sea
 SS1 1EF

01702 844984
 info@rpcestateagents.co.uk
 www.rpcestateagents.co.uk

RP & C.
 RICKY, PLANT & CHEN-PORTER