

for sale

£190,000 Freehold



Latimer Street Willenhall WV13 1EU

A well-proportioned **THREE-BEDROOM SEMI-DETACHED HOUSE** offering spacious accommodation across two floors.

Latimer Street Willenhall WV13 1EU

Hallway

A welcoming entrance hallway providing access to all main living areas with staircase to first floor.

Dining Room

12' 1" x 9' 11" (3.68m x 3.02m)

Separate dining room, with space for dining furniture.

Living Room

12' 5" x 13' 3" (3.78m x 4.04m)

A bright and spacious reception room positioned to the front of the property, offering ample space for seating and relaxation.

Kitchen

12' 2" x 7' 5" (3.71m x 2.26m)

Fitted Kitchen with a range of units and work surfaces, positioned to the rear with access to the garden. Scope for updating to create a modern open-plan space if desired.

Pantry

7' 4" x 4' 9" (2.24m x 1.45m)

Useful additional storage space located off the hallway/kitchen area.

Landing

Doors to all bedrooms, shower room and toilet.

Bedroom One

10' 5" x 13' 2" (3.17m x 4.01m)

A generous double bedroom positioned to the front aspect.

Bedroom Two

12' 2" x 9' 11" (3.71m x 3.02m)

Another well-proportioned double bedroom to the rear aspect with space for bedroom furniture.

Bedroom Three

11' 4" x 7' 7" (3.45m x 2.31m)

A comfortable single bedroom overlooking the rear garden.

Shower Room

6' 6" x 4' 9" (1.98m x 1.45m)

Comprising a shower enclosure and wash basin.

Toilet

3' 8" x 4' 7" (1.12m x 1.40m)

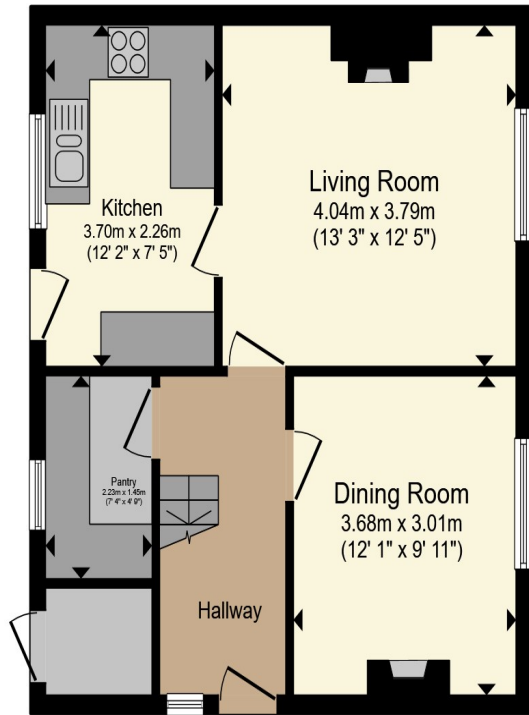
Convenient separate toilet.



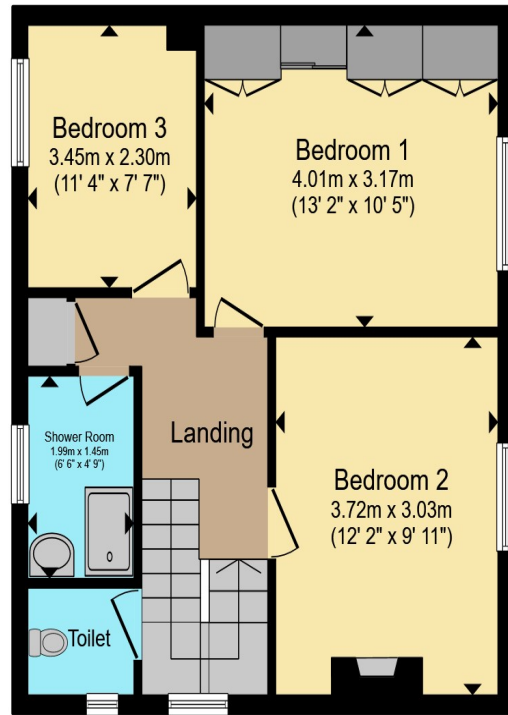
Rear Garden

Generous rear garden mainly laid to lawn and paved pathway.





Ground Floor



first floor

Total floor area 94.2 m² (1,014 sq.ft.) approx

This floor plan is for illustrative purposes only. It is not drawn to scale. Any measurements, floor areas (including any total floor area), openings and orientation are approximate. No details are guaranteed, they cannot be relied upon for any purpose and they do not form part of any agreement. No liability is taken for any error, omission or misstatement. A party must rely upon its own inspection(s). Powered by www.propertybox.io



To view this property please contact Paul Dubberley on

T 01902 633323
E willenhall@pauldubberley.co.uk

14 New Road
 WILLENHALL WV13 2BG

Property Ref: PWI104483 - 0003
 Tenure:Freehold EPC Rating: G
 Council Tax Band: A

view this property online PaulDubberley.co.uk/Property/PWI104483



1. MONEY LAUNDERING REGULATIONS Intending purchasers will be asked to produce identification documentation at a later stage and we would ask for your co-operation in order that there will be no delay in agreeing the sale. 2. These particulars do not constitute part or all of an offer or contract. 3. The measurements indicated are supplied for guidance only and as such must be considered incorrect. Potential buyers are advised to recheck measurements before committing to any expense. 4. We have not tested any apparatus, equipment, fixtures, fittings or services and it is in the buyers interest to check the working condition of any appliances.

Paul Dubberley is a trading name of Connells Residential which is registered in England and Wales under company number 1489613, Registered Office is Cumbria House, 16-20 Hockliffe Street, Leighton Buzzard, Bedfordshire, LU7 1GN. VAT Registration Number is 500 2481 05.

see all our properties at www.pauldubberley.co.uk | www.rightmove.co.uk | www.zoopla.co.uk