



Camberwell Grove

London, SE5 8JE

£1,700 Per Month



One double bedroom period conversion on Camberwell Grove.

This well proportioned apartment has recently been refurbished to a very high standard and forms part of an imposing Georgian House.

Situated on one of the most beautiful roads in the Borough, Camberwell Grove, the property benefits from a good sized double bedroom with contemporary en-suite bathroom and open plan reception containing a modern fitted kitchen with integrated appliances.

To the rear of the property is a large well maintained communal garden.

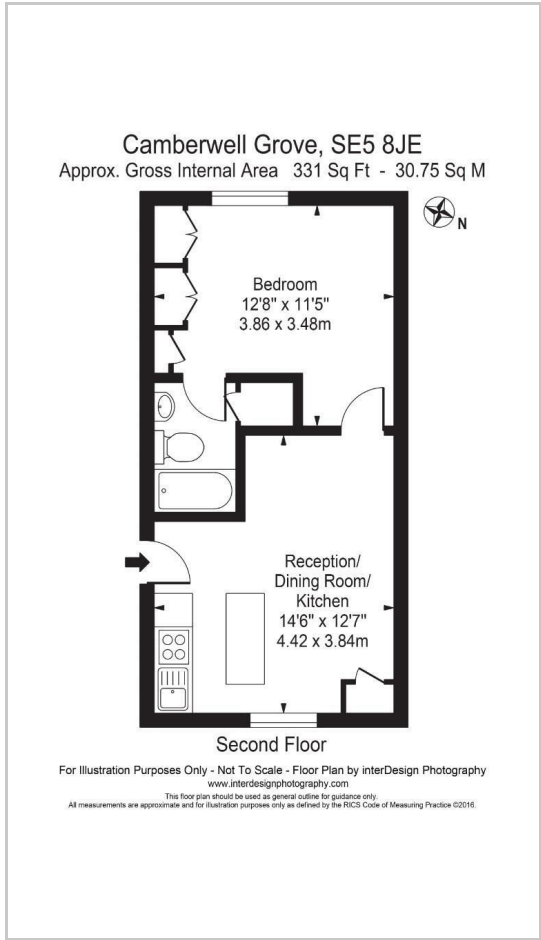
Minutes from excellent transport links and a amenities and a short walk to Kings College Hospital.



Area Map



Floor Plans



Energy Efficiency Graph



These particulars are intended to give a fair and reliable description of the property but no responsibility for any inaccuracy or error can be accepted and do not constitute an offer or contract. We have not tested any services or appliances (including central heating if fitted) referred to in these particulars and the purchasers are advised to satisfy themselves as to the working order and condition. If a property is unoccupied at any time there may be reconnection charges for any switched off/disconnected or drained services or appliances - All measurements are approximate. **THINKING OF SELLING?** If you are thinking of selling your home or just curious to discover the value of your property, Hunters would be pleased to provide free, no obligation sales and marketing advice. Even if your home is outside the area covered by our local offices we can arrange a Market Appraisal through our national network of Hunters estate agents.