



Peckham Rye, SE22

£335,000

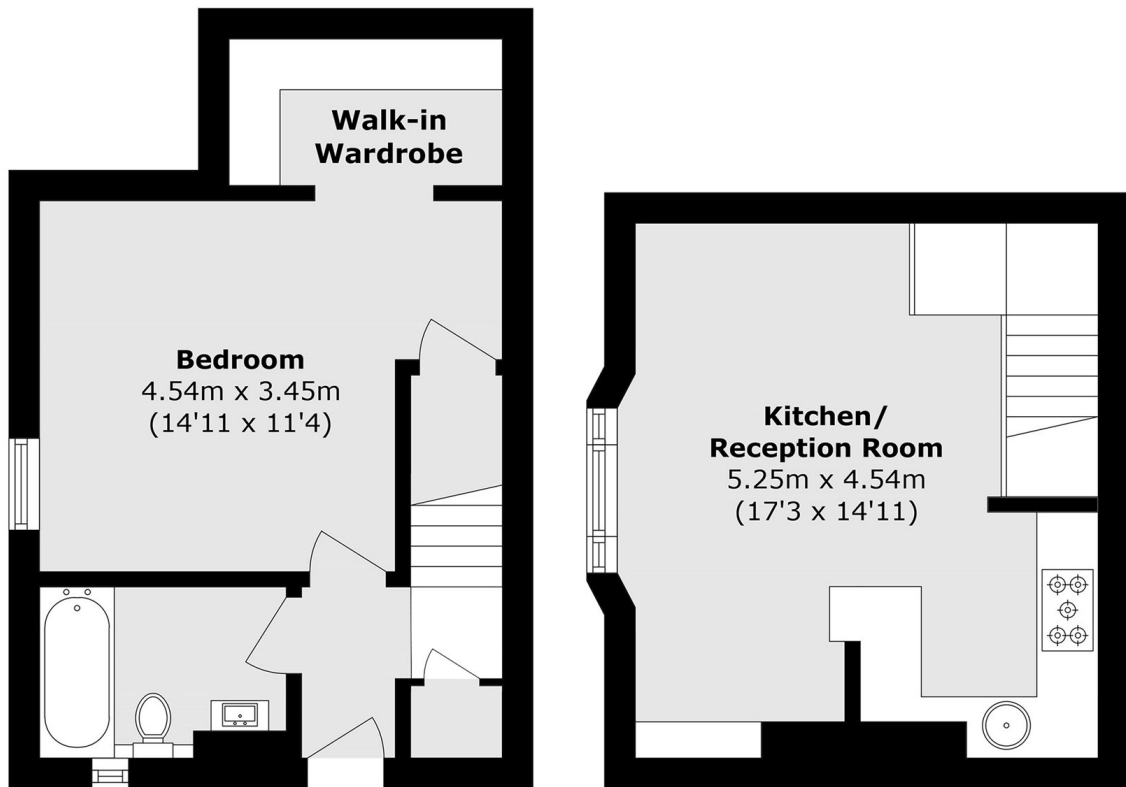
Situated in an impressive period building, this one bedroom flat offers 469 sq ft of well appointed split level living space and enjoys uninterrupted views across the leafy expanse of Peckham Rye. This flat offers the rare benefit of being sold with no onward chain and comes with a long lease.

Peckham Rye is located in the heart of East Dulwich moments from an abundance of shopping amenities and excellent restaurants and bars along Lordship Lane. Peckham Rye & East Dulwich stations provides rail links to the city with the open spaces of Peckham Rye Park on your doorstep.

Features

- Views of Peckham Rye Park
- Period Building
- Split Level
- Excellent Location
- Long Lease
- No Onward Chain

Peckham Rye, London, SE22



Ground Floor

First Floor

Total area (approx.): 52.9 sq. m (469.4 sq. ft)