

for sale
£110,000 Leasehold

**Paul
Dubberley**



Creed Way West Bromwich B70 9JT

Creed Way West Bromwich B70 9JT



Property Description

DO YOU HAVE A PROPERTY TO SELL?

We offer FREE selling valuations

DO YOU NEED A MORTGAGE?

Our fully qualified mortgage experts offer mortgage & remortgage advice

Entrance Hall

Having a double glazed door to the front, central heating radiator, telephone intercom, airing cupboard and doors to

Lounge

Having a double glazed bay window to the front elevation, double glazed window to the side, central heating radiator and TV.

Kitchen

Having a double glazed window to the front elevation, fitted kitchen with a range of wall and base units, with worksurfaces over, stainless steel one and half bowl sink and drainer, tiling to splash prone areas, electric oven and gas hob with cooker hood over, plumbing for a washing machine, fridge freezer and central heating boiler.

Bedroom One

Having a double glazed window to the front elevation, and central heating radiator.

Bedroom Two

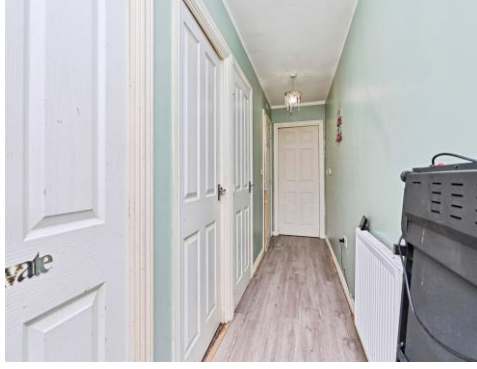
Having a double glazed window to the front elevation, and central heating radiator.

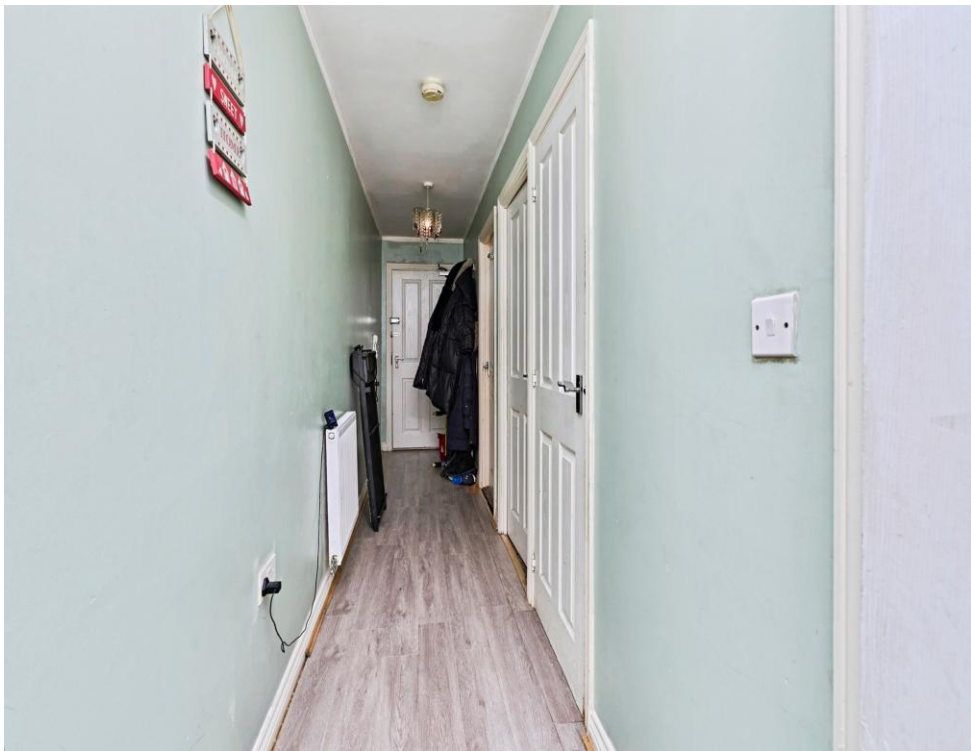
Bathroom

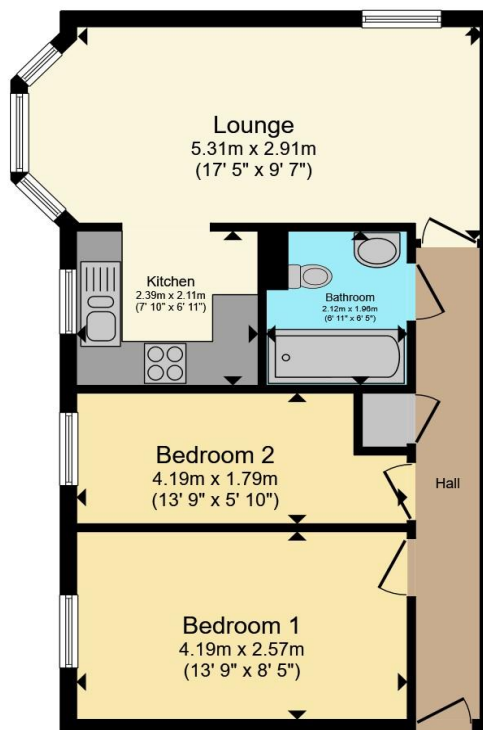
Fully tiled, bath with shower over, wash hand basin, low level WC, shaver point, extractor fan and central heating radiator.

Agent Note

Agents Note: 'There is a easement on the title, please enquire with the branch'.







Total floor area 51.4 m² (554 sq.ft.) approx

This floor plan is for illustrative purposes only. It is not drawn to scale. Any measurements, floor areas (including any total floor area), openings and orientation are approximate. No details are guaranteed, they cannot be relied upon for any purpose and they do not form part of any agreement. No liability is taken for any error, omission or misstatement. A party must rely upon its own inspection(s). Powered by www.propertybox.io



To view this property please contact Paul Dubberley on

T 0121 525 2111
E westbromwich@pauldubberley.co.uk

290 - 292 High Street
 WEST BROMWICH B70 8EN

EPC Rating: C Council Tax
 Band: B

Service Charge:
 1280.00

Ground Rent:
 125.00

view this property online PaulDubberley.co.uk/Property/PWB105477

1. MONEY LAUNDERING REGULATIONS Intending purchasers will be asked to produce identification documentation at a later stage and we would ask for your co-operation in order that there will be no delay in agreeing the sale. 2. These particulars do not constitute part or all of an offer or contract. 3. The measurements indicated are supplied for guidance only and as such must be considered incorrect. Potential buyers are advised to recheck measurements before committing to any expense. 4. We have not tested any apparatus, equipment, fixtures, fittings or services and it is in the buyers interest to check the working condition of any appliances.

Paul Dubberley is a trading name of Connells Residential which is registered in England and Wales under company number 1489613, Registered Office is Cumbria House, 16-20 Hockliffe Street, Leighton Buzzard, Bedfordshire, LU7 1GN. VAT Registration Number is 500 2481 05.

see all our properties at www.pauldubberley.co.uk | www.rightmove.co.uk | www.zoopla.co.uk

Property Ref: PWB105477 - 0002

