

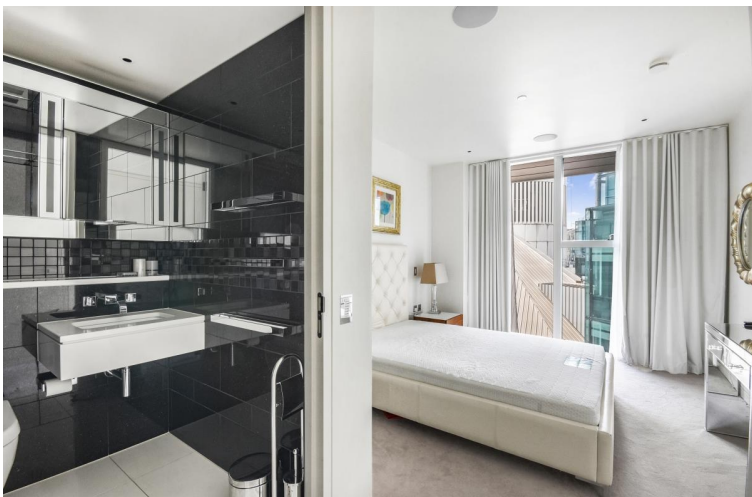
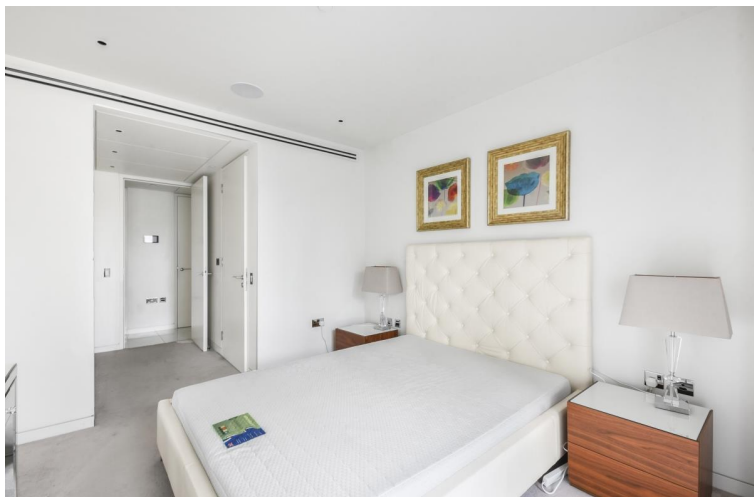


Moor Lane, London EC2Y

Price £1,100 per week - Furnished







Description

A luxury 852sqft two bedroom apartment situated in the sought after Heron development.

This rare to the market apartment boasts a high specification with comfort cooling and smart home technology complete with central control panel, iPod docking system and ceiling speakers. The property comprises two double bedrooms each with fitted wardrobes and en-suite to master, two luxury bathrooms, open plan kitchen with natural wood work surfaces and Miele appliances, white Porcelain tiled flooring, spacious reception area, large balcony and floor to ceiling windows.

The Heron is located in the heart of the City of London and approximately 0.2 miles from Moorgate station. The development benefits from an on-site gym, exclusive resident's club and 24 hour concierge.

Council tax band: G. Rent is payable on a monthly basis and you may be required to pay more than a month's rent in advance, depending on your circumstances. You will be required to pay a 1 week holding deposit following a successful offer. Tenancies with annual rents up to £50,000 will require a 5 weeks' security deposit, while those exceeding this threshold will require a 6 weeks' deposit. Utility bills, council tax, telephone line and broadband are not included in the rent. As well as paying the rent, you may also be required to make some additional permitted payments. If your tenancy does not qualify as an AST, additional fees may apply. Please visit jll.co.uk/fees for details of fees that may be payable when renting a property. To check broadband and mobile phone coverage please visit Ofcom here ofcom.org.uk/phones-telecoms-and-internet/advice-for-consumers/advice/ofcom-checker

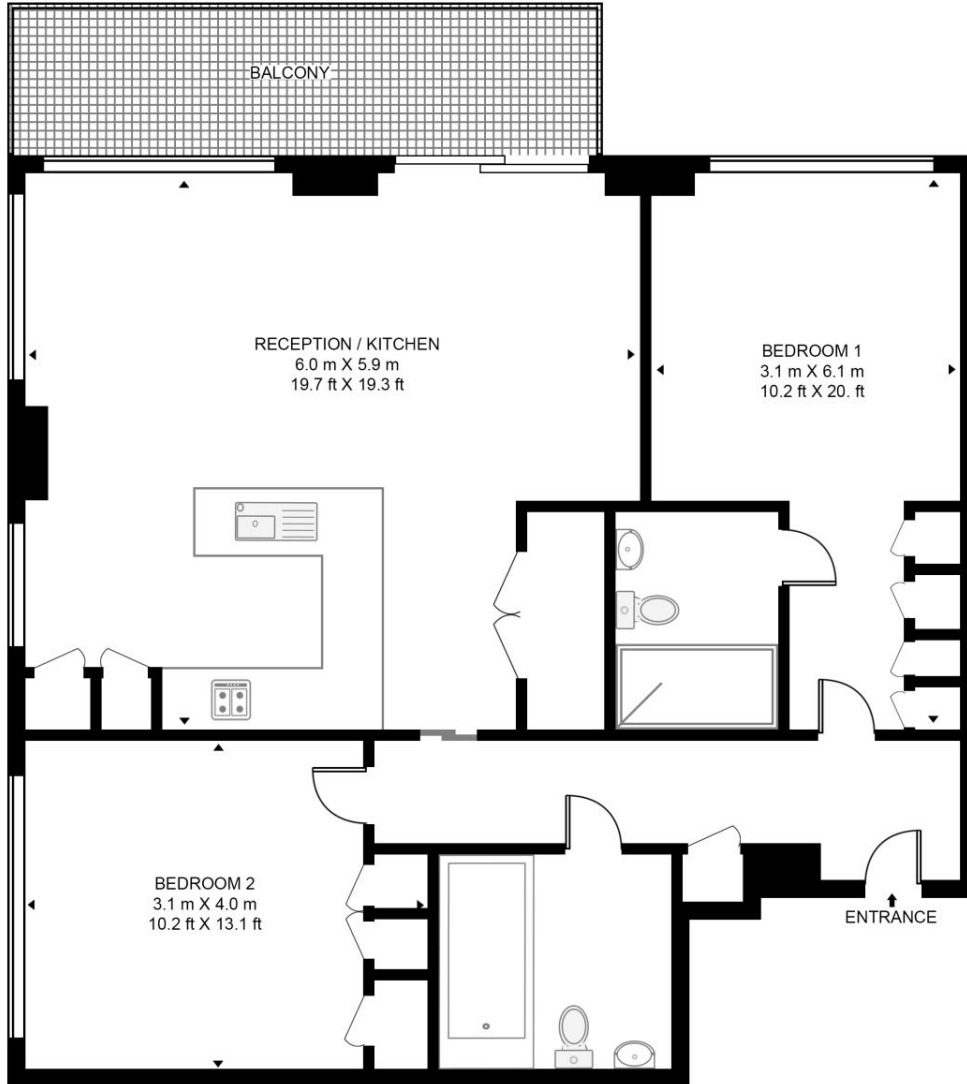
- Bright dual aspect reception room
- 2 Good-Sized Bedrooms with fitted wardrobes
- 2 Large Bathrooms
- 10th Floor
- Large balcony
- On site gym
- 24 hour concierge
- 0.2 miles from Moorgate Station
- Approx. 852 sq ft (79.2 sq m)
- Furnished

Floorplan

852 sq ft | 79 sq m

THE HERON, 5 MOOR LANE

APPROXIMATE GROSS INTERNAL FLOOR AREA 852 SQ.FT (79.2 SQ.M)



TENTH FLOOR



This floor plan has been defined by the RICS Code of Measurement. This floor plan and all others are for approximate representative purposes only and upon usage is agreed to as such by the client.
WWW: hdvirtualart.com | TEL: 0203.974.1567 | EMAIL: info@hdvirtualart.com

City
25 Walbrook The Walbrook
Building,
London EC4N 8AF
+4420 7337 4000

Urban living, your way.

jll.co.uk/residential

© 2019 Jones Lang LaSalle IP, Inc. All rights reserved. All information contained herein is from sources deemed reliable; however, no representation or warranty is made to the accuracy thereof.

