



**Guide Price**  
**£375,000**

**Freehold**

3x  2x  2x 

**Mincers Close,  
Lordswood, Chatham,  
Kent, ME5**

**OVER 60?**

Secure this property  
for up to **59% less!**

*Wards*  
Helping you move forwards



## Main features

- Extended end of terrace house
- En suite bathroom to main bedroom
- Lounge & dining room
- Modern fitted kitchen
- Good sized rear garden and garage and parking

## Accommodation

### GROUND FLOOR

Entrance Hall

Dining Area : 13'8 x 10'9 (4.17m x 3.28m)

Lounge : 22'4 x 10'5 (6.81m x 3.18m)

Kitchen : 14'0 x 8'1 (4.27m x 2.47m)

### FIRST FLOOR

Landing

Bedroom 1 : 16'10 x 10'6 (5.13m x 3.20m)

En Suite Bathroom Room : 10'6 x 5'1 (3.20m x 1.55m)

Bedroom 2 : 8'7 x 7'1 (2.62m x 2.16m)

Bedroom 3 : 11'3 x 10'10 (3.43m x 3.30m)

Shower Room : 7'1 x 5'11 (2.16m x 1.80m)

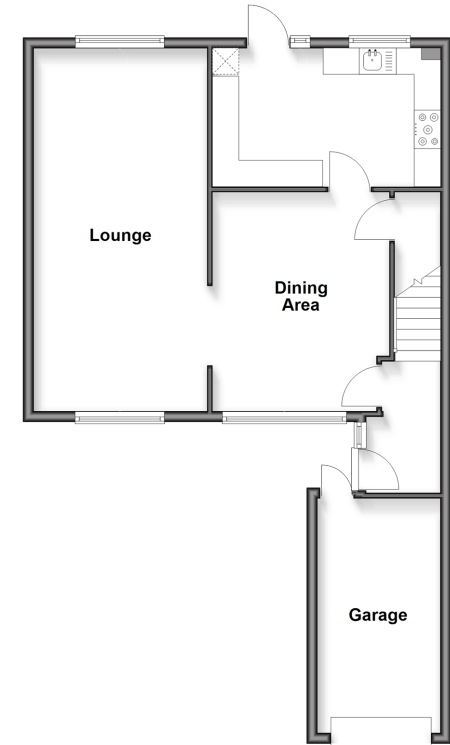
### OUTSIDE

Driveway

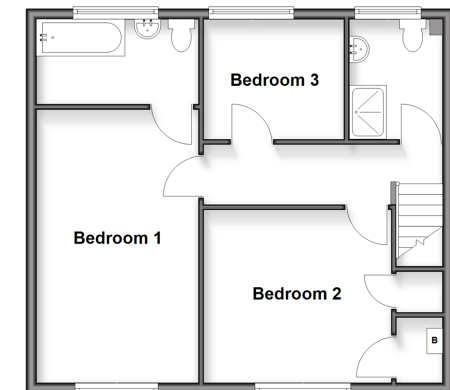
Garage

Rear Garden

**Ground Floor**  
Approx. 65.6 sq. metres (706.6 sq. feet)



**First Floor**  
Approx. 53.0 sq. metres (570.5 sq. feet)



**Call Walderslade - 01634 865661 ■ [wardsofkent.co.uk](http://wardsofkent.co.uk)**

- Legal advice should be taken to verify fixtures/fittings, planning, alterations and/or lease details
- Appliances & services are untested, dimensions are approximate and floor plans are not to scale
- Through a Homewise Home For Life Plan people aged 60+ can secure this property for up to 59% less, by purchasing a Lifetime Lease



12143048/20260313/JT1/AJB