



# HARDINGS



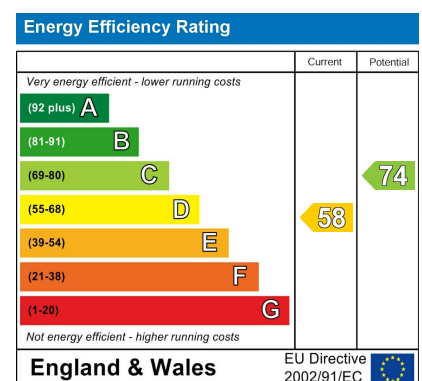
Aston Mead  
Guide Price £520,000





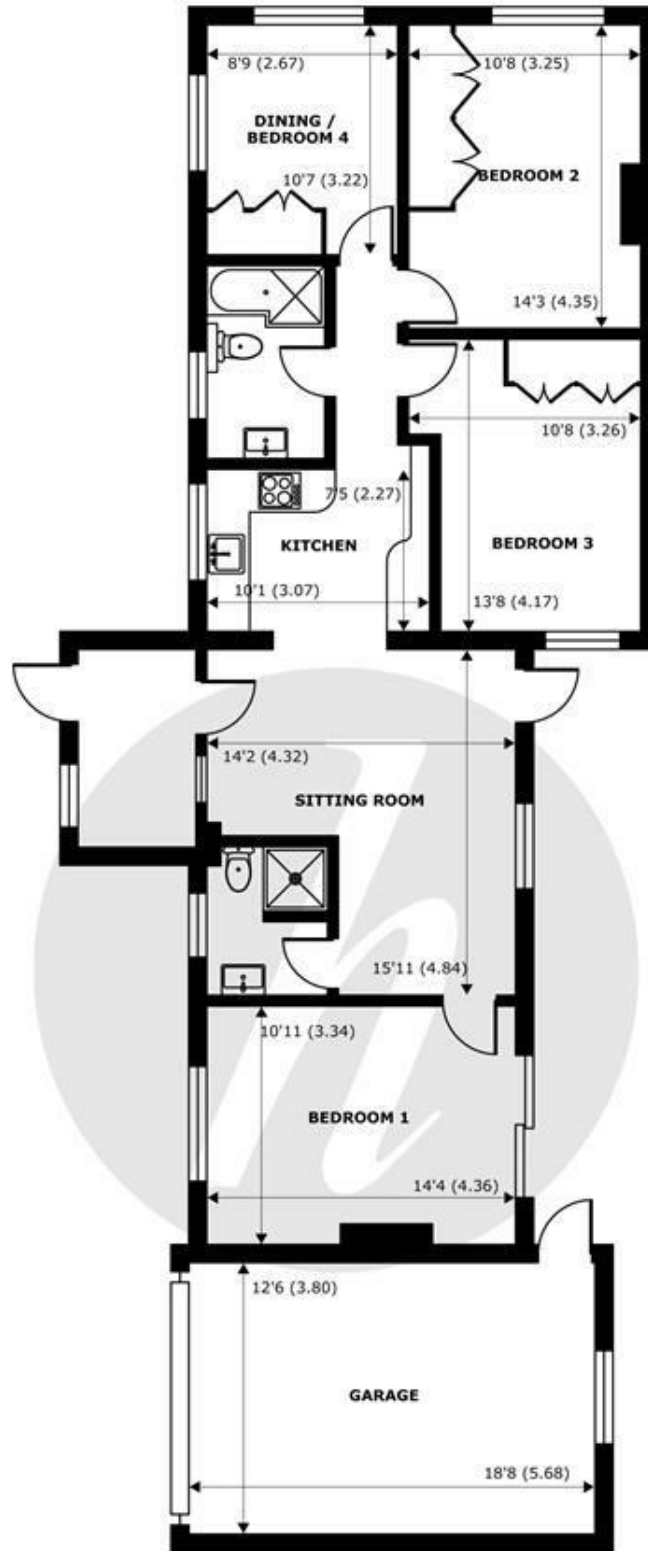
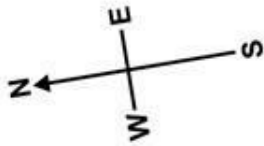
A fully refurbished semi detached three/ four bedroom bungalow with two bathrooms tucked away on a quiet residential road all within a short distance to excellent local amenities and well regarded nearby schools. Offering flexible accommodations with ample storage it further benefits include south facing garden, garage and driveway parking for multiple cars.

Please note, some of the photographs used are CGI images for illustrative purposes.



## Features

- Semi-Detached Bungalow
- Private South-Facing Garden
- Modern Integrated Kitchen
- Refurbished
- Close to Excellent Schools and Local Amenities
- Three/Four Bedrooms
- Ample Driveway Parking
- Garage
- Two Modern Bathrooms



**GROUND FLOOR**  
abt 1138 SQFT (105.7 SQMT)

## Aston Mead, Windsor, SL4

Approximate Internal Area = 1007 sq ft / 93.6 sq m (Exclude Garage)  
Approximate External Area = 1138 sq ft / 105.7 sq m (Exclude Garage)

For identification only - Not to scale



Floor plan produced in accordance with RICS Property Measurement 2nd Edition, Incorporating International Property Measurement Standards (IPMS2 Residential). © nichecom 2025. Produced for Hardings. REF: 1345716





11 High Street, Windsor, Berkshire, SL4 1LD,  
T: 01753 833 118 | E: info@hardings.co.uk  
www.hardings.co.uk

