



## 19 Kirkland Road, Dunlop

In Excess of £160,000

DONALD  
**ROSS**  
RESIDENTIAL



## 19 Kirkland Road

Dunlop, Kilmarnock

Spacious three bedroom semi-detached villa in Dunlop with flexible layout, west facing garden and driveway. Ideal for families with excellent access to amenities, schooling and transport links.

Council Tax band: C

Tenure: Freehold

EPC Energy Efficiency Rating: E

EPC Environmental Impact Rating: E

- Generous plot within sought after village setting
- Bright and spacious lounge
- Kitchen with ample storage
- Flexible layout with ground floor double bedroom / dining room
- Ground floor shower room
- Two further double bedrooms on the upper level
- Large private west facing rear garden
- Driveway providing off street parking
- Excellent access to local amenities, schooling and transport links



















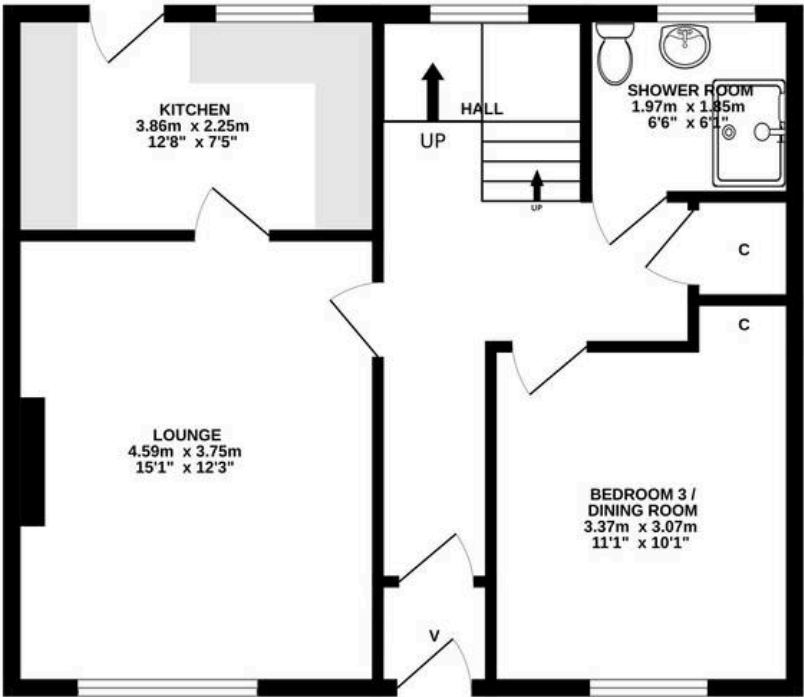




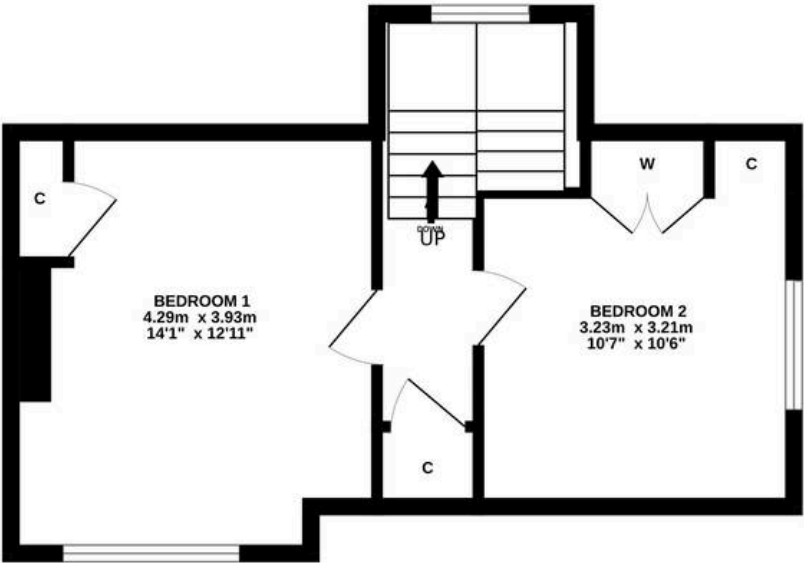




GROUND FLOOR



1ST FLOOR



ALL SIZES TAKEN AT WIDEST POINTS

Whilst every attempt has been made to ensure the accuracy of the floorplan contained here, measurements of doors, windows, rooms and any other items are approximate and no responsibility is taken for any error, omission or mis-statement. This plan is for illustrative purposes only and should be used as such by any prospective purchaser. The services, systems and appliances shown have not been tested and no guarantee as to their operability or efficiency can be given.  
 Made with Metropix ©2026



## Donald Ross Residential Kilmarnock

Donald Ross Residential, 104-106 John Finnie Street – KA1 1BB

01563 550088 • [kilmarnock@donaldross.co.uk](mailto:kilmarnock@donaldross.co.uk) • [www.donaldross.co.uk](http://www.donaldross.co.uk)

While every effort has been made to ensure accuracy, buyers should independently verify all details and review the Home Report before submitting an offer. No warranty or representation is given regarding the property, and neither the agent nor the seller accepts responsibility for any inaccuracies. Buyers must satisfy themselves on all legal aspects.