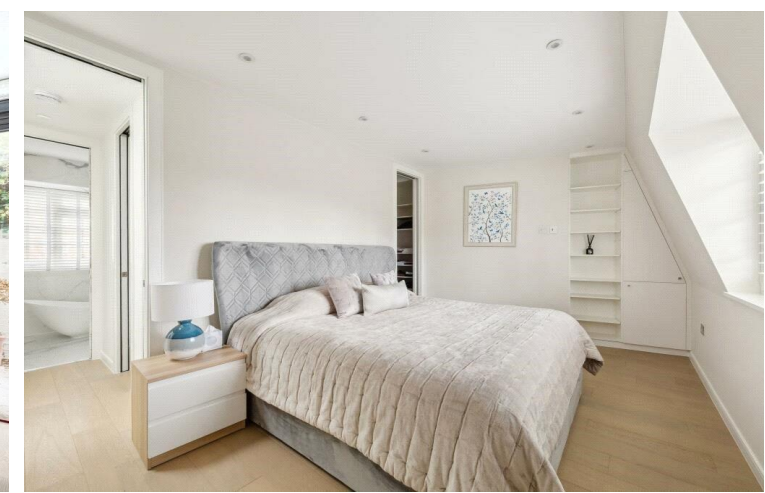




Burnsall Street  
SW3

CHESTERTONS





A beautifully presented house with accommodation over three floors including a fantastic patio. The property is over 1459 sq ft and offers three bedrooms, two bathrooms, kitchen/breakfast room, reception and a paved garden.

- Prime location
- Modern
- Garden
- Flex on furniture

**£2,450 per week (£10,616.67 pcm)**

Additional tenant charges apply (fees apply to non-AST tenancies only)

Tenancy Agreement Fee: £300

References per Tenant/Guarantor: £60

Inventory check (approx. £100 – £250 inc. VAT)

[chestertons.co.uk/property-to-rent/applicable-fees](http://chestertons.co.uk/property-to-rent/applicable-fees)

Energy Efficiency Rating		Current	Potential
92-100	A		
81-91	B		
69-80	C		77
55-68	D	53	
39-54	E		
21-38	F		
1-20	G		

Not energy efficient - higher running costs

EU Directive 2002/91/EC  
England, Scotland & Wales

**Minimum Term:** 12 months  
**Deposit Required:** £14,700.00  
**Local Authority:** Royal Borough of Kensington & Chelsea  
**Council Tax Band:** H  
**EPC Rating:** D  
**Furnished, Part Furnished, Unfurnished**

**Chestertons Chelsea Lettings**

17 Cale Street

London

SW3 3QR

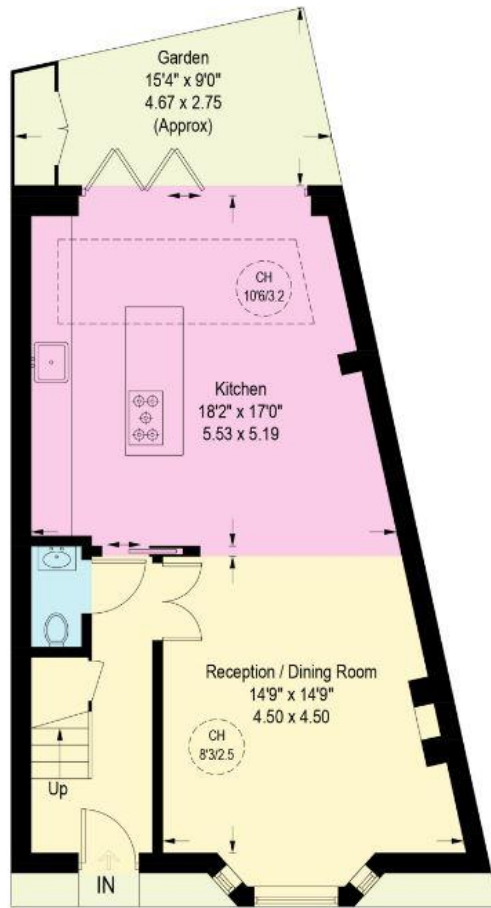
[chelsea@chestertons.co.uk](mailto:chelsea@chestertons.co.uk)

02075944750

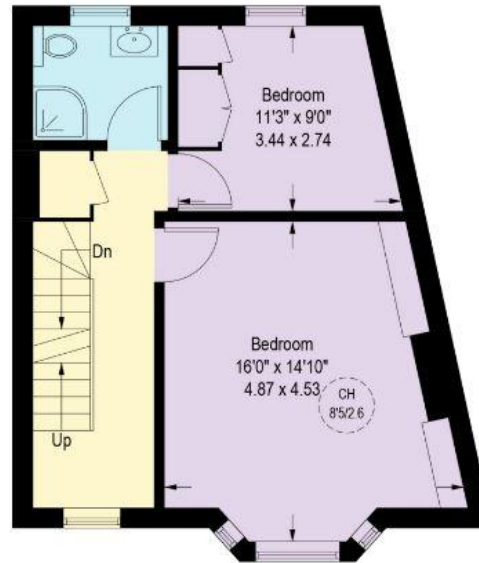
[chestertons.co.uk](http://chestertons.co.uk)

# Burnsall Street, SW3

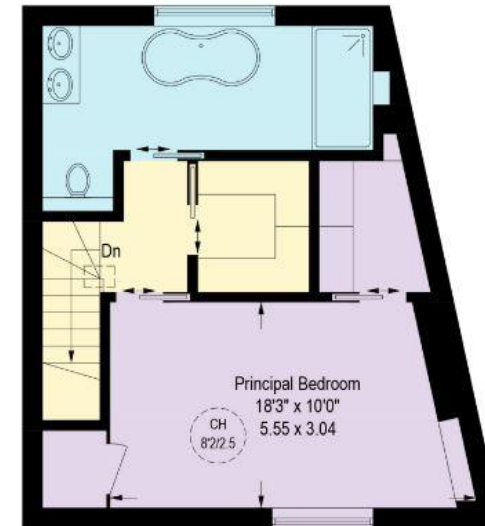
Approximate Gross Internal Area = 1459 sq ft / 135.6 sq m  
External Area = 137 sq ft / 12.7 sq m



Ground Floor



First Floor



Second Floor

Illustration for identification purposes only.  
measurements are approximate, not to scale. (ID899538)

Chesterton Global Ltd trading as Chestertons for themselves and for the vendor of this property whose agents they are, give notice that (i) these particulars do not constitute any part of an offer or contract, (ii) all statements contained within these particulars are made without responsibility on the part of Chestertons or the vendor, (iii) whilst made in good faith, none of the statements contained within these particulars are to be relied upon as a statement or representation of fact, (iv) any intending purchasers must satisfy themselves by inspection or otherwise as to the correctness of each of the statements contained within these particulars, (v) the vendor does not make or give either Chestertons or any person in their employment any authority to make or give representation or warranty whatsoever in relation to this property. Wide angle lenses may be used. ©Copyright Chestertons | Chesterton Global Ltd | Registered Office 40 Connaught Street, Hyde Park, London W2 2AB Registered Company Number 05334580.



This paper is  
100% recyclable