



Sunningdale Manor

La Rue De La Vignette



Sunningdale Manor, La Rue De La Vignette, St Saviour, JE27HY

Just exhaustively restored, extended, and enhanced to most extravagant standards, without regard to cost, this most imposing and important classical Victorian country mansion, stands protected by several acres of gardens, grounds, and agricultural lands. The estate stands in tranquil rural surroundings and is approached via an attractive gated main driveway leading off a country lane: Additionally, there is a secondary gated entrance driveway access.

The gardens have been newly landscaped, together with the creation of a fine and extensive main entrance forecourt, from which twin sweeping Haddonstone balustraded stairways lead up to the imposing front doorway and to extensive range of vegetables, fruits and cut flowers. This area is fully irrigated and also planted with young fruit trees. There is a large propagation enclosure and with leisure in mind, there is the provision of a sizeable conservatory style sunroom, opening to a dining terrace, together with a very comprehensively equipped catering kitchen for the provision of outdoor entertaining and dining facilities.

Sunningdale Manor offers a superb range of lavishly appointed and elegantly proportioned accommodation within the main residence, together with the benefit of a fully self-contained and equally well-appointed air-conditioned guests' lodge and a further spacious three bedroom apartment, set above the garage block, with the benefit of a separate private gated entrance. The accommodation of the main house includes a truly stunning 53' family kitchen/living room complex, the whole fitted and appointed to extraordinarily high standards and being air-conditioned, together with numerous French doors opening on three sides to Haddonstone balustraded terrace and leisure/dining deck. There are two further impressive reception rooms on the ground floor, plus at lower ground floor level, a magnificent open-plan study and further dining room area, set surrounding the feature centrally located air-conditioned glass sided wine cellar, which forms the focal feature of this lower ground floor complex. Also, at this level there is a most comprehensively equipped catering kitchen with the finest of appliances. Additionally, there is an air-conditioned gymnasium, house laundry and Estate Manager's office with external access doorway. The lower ground floor accommodation also externally accesses to a covered bar-b-que terrace facility.

Only personal inspection can allow the viewer to appreciate the exhaustive efforts that have been employed to make this such a most exceptional home.



Parish: St Saviour

Qualification: Qualified

Tenure: Freehold

Price £15,500,000



- Stunning country mansion
- Extravagantly restored
- exceptional guests lodge
- Separate staff wing
- Extensive landscaped gardens and grounds
- Truly outstanding throughout



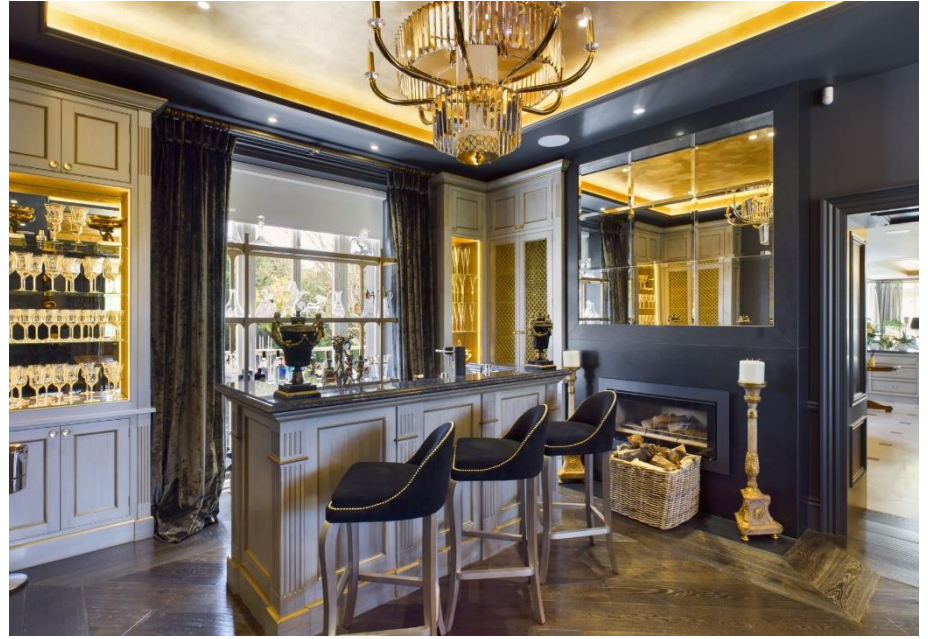




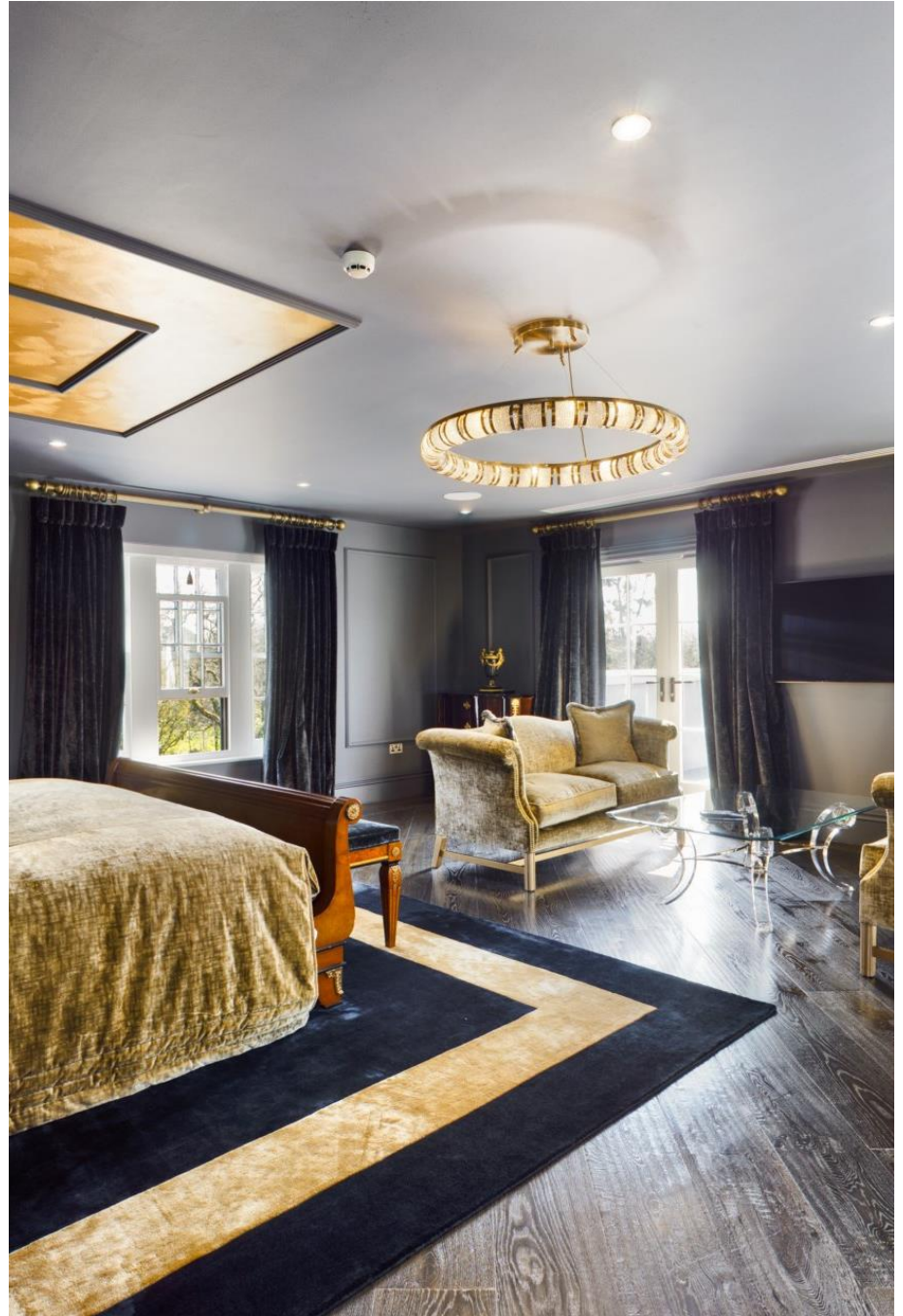




















+441534 877977

Knight Frank Jersey

37-39 Halkett Place, St. Helier, Jersey JE2 4WG

knightfrank.je

Your partners in property

1. Particulars: These particulars are not an offer or contract, nor part of one. You should not rely on statements given by Knight Frank Jersey in the particulars, by word of mouth or in writing ("information") as being factually accurate about the property, its condition or its value. Neither Knight Frank Jersey nor any joint agent has any authority to make any representations about the property, and accordingly any information given is entirely without responsibility on the part of Knight Frank Jersey. 2. Material Information: Please note that the material information is provided to Knight Frank Jersey by third parties and is provided here as a guide only. While Knight Frank Jersey has taken steps to verify this information, we advise you to confirm the details of any such material information prior to any offer being submitted. If we are informed of changes to this information by the seller or another third party, we will use reasonable endeavours to update this as soon as practical. 3. Photos, Videos etc: The photographs, property videos and virtual viewings etc. show only certain parts of the property as they appeared at the time they were taken. Areas, measurements and distances given are approximate only. 4. Regulations etc: Any reference to alterations to, or use of, any part of the property does not mean that any necessary planning, building regulations or other consent has been obtained. A buyer must find out by inspection or in other ways that these matters have been properly dealt with and that all information is correct. 5. Fixtures and fittings: A list of the fitted carpets, curtains, light fittings and other items fixed to the property which are included in the sale (or may be available by separate negotiation) will be provided by the Seller's Lawyer. Particulars dated 03/09/2025. All information is correct at the time of going to print.

