



The Gable Hill Farm Close,
Botcheston,
Leics, LE9 9RQ





Offers Over £395,000

GENERAL

The Gables is a stylish contemporary barn conversion in a lovely country location with wonderful southerly views. The Barn is set well back from the road on an exclusive gated development of similar high quality properties. Particular attention has been paid to the design and specification with external finishes including a mix of red brick, natural stone and rendered elevations. The beautifully planned accommodation briefly includes a large reception hall with study area, zoned open plan living kitchen with vaulted ceiling, three bedrooms with an en-suite and family bathroom.

The property is designed to be energy efficient with a Vaillant air source heat pump with underfloor heating creating a cosy environment. There is also intermorm triple glazed windows.



LOCATION

The house is located just outside the West Leicestershire village of Botcheston. There is a public house in the village and more comprehensive amenities in the nearby villages of Kirby Muxloe and Desford. Botcheston is well located for access to the motorway network and is also close to Fosse Park for shopping.

THE BARN

The accommodation is arranged as follows. Front door opens into the Reception Hall.

RECEPTION HALL

An impressive introduction to the barn. The reception is a really good size and is used by the current owner as a study area.

LIVING KITCHEN

18'4" x 15'4" max

A spectacular open plan zoned living area. The kitchen area is fitted with a generous range of fashionable base and wall cabinets with quartz work surfaces and integrated appliances including a double oven, induction hob, fridge freezer and dishwasher. Bi fold doors open from the living area into the garden and there is a large media wall.

PLANT ROOM

Housing the boiler and under floor heating manifolds.

MASTER BEDROOM

15'6" x 11'3"

A charming room with a high ceiling giving a real feeling of space.

EN-SUITE

A stylish en suite with fashionable matt black fittings. There is a shower enclosure with rainfall and hand held shower attachments, floating wash hand basin and double flush lavatory. Electric shaving point and ladder style towel rail.

BEDROOM TWO

12'7" x 12'2"

A good sized double bedroom.

BEDROOM THREE

9'9" x 9'6"

A charming single bedroom

BATHROOM

A contemporary bathroom with a panelled bath, shower enclosure with rainfall and hand held shower attachments, ladder style towel rail and low flush lavatory.

OUTSIDE

The Gable is approached down a long shared drive leading to a stoned parking area

IMPORTANT NOTE

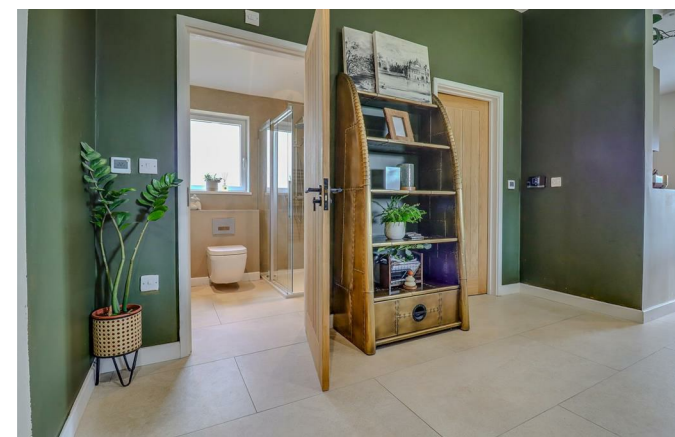
The purchaser will have a right of way down the shared drive and be responsible for contributing towards the maintenance.

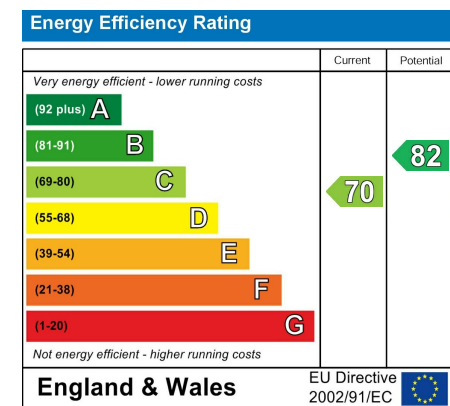
THE GARDEN

There is a lawned garden that wraps around the barn with a terrace which is accessed via the bifold doors from the living kitchen.

COUNCIL TAX BAND

Hinckley and Bosworth Council Tax Band F.



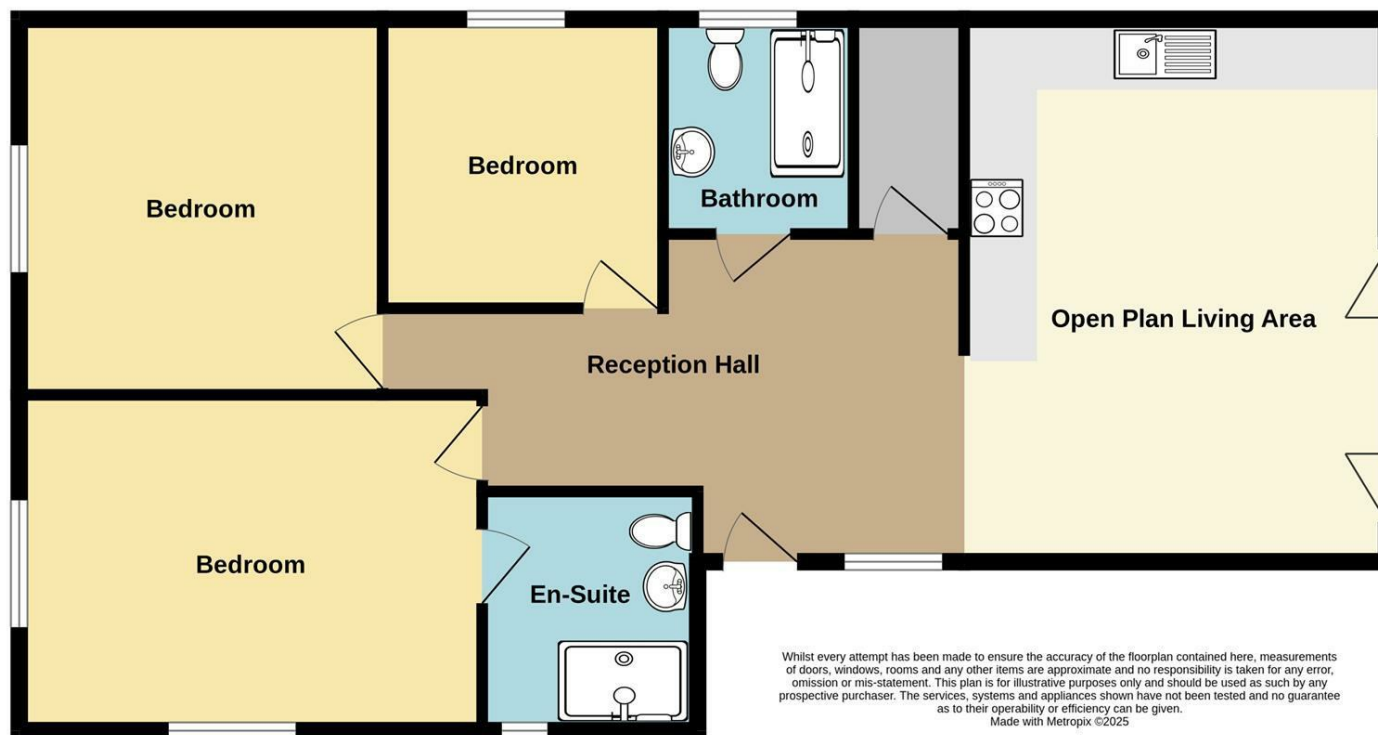








Ground Floor



Important Notice: Fox Country Properties Limited, their clients and any joint agents give notice that: 1. They are not authorised to make or give any representations or warranties in relation to the property either here or elsewhere, either on their own behalf or on behalf of their client or otherwise. They assume no responsibility for any statement that may be made in these particulars. These particulars do not form part of any offer or contract and must not be relied upon as statements or representations of fact. 2. Any areas, measurements or distances are approximate. The text, photographs and plans are for guidance only and are not necessarily comprehensive. It should not be assumed that the property has all necessary planning, building regulation or other consents and Fox Country Properties have not tested any services, equipment or facilities. Purchasers must satisfy themselves by inspection or otherwise.



5 Market Place, Market Bosworth, Nuneaton, Warwickshire CV13 0LF

Sales: **01455 890898**

41 High Street, Kibworth Beauchamp, Leicester LE8 0HS

Sales: **0116 2796543**

foxcountryproperties.co.uk