



SOUL ESTATES

SALES & LETTINGS

TO LET - 3 BEDROOM HOUSE

Haines Close, Tipton, DY4

£1,250 PCM

Soul Estates are proud to present this well presented 3 bedroom semi-detached house To Let. This perfect family home is situated in a cul-de-sac location in a very popular area of Tipton. Situated near Dudley Port Train Station with good schools, local amenities and transport links and close to Great Bridge Asda and Burnt Tree island Tesco.

The property offers an entrance porchway leading into the hallway with rooms going off to the downstairs WC, spacious lounge with dining area and family kitchen. Kitchen with a range of wall and base units to match, splashback tiling, washing machine and a 7 gas burner hob and oven.

Stairs leading to the first-floor landing which leads off to, three bedrooms and a family bathroom. The property also benefits gas central heating, double glazing, low maintenance front and rear garden with off-road parking. The property will be provided un-furnished.

✓ **PERFECT FAMILY HOME**

✓ **3 BEDROOM SEMI-DETACHED HOUSE**

✓ **SPACIOUS LOUNGE**

✓ **CUL-DE-SAC LOCATION & OFF-ROAD PARKING**











SOUL ESTATES

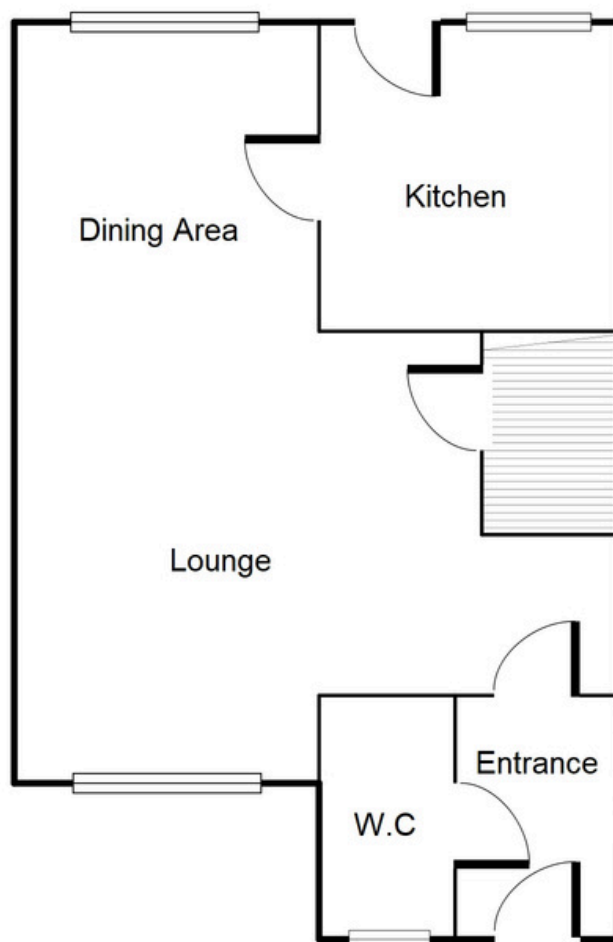
SALES & LETTINGS

TO LET - 3 BEDROOM HOUSE

Haines Close, Tipton, DY4

£1,250 PCM

Ground Floor



This floorplan is just an example, this is not to scale.
Please see description for exact room sizes.
(c) Soul Estates

Entrance

5' 9" x 3' 0" (1.75m x 0.91m)

W.C

5' 9" x 2' 10" (1.75m x 0.86m)

Lounge / Dining

23' 9" x 15' 0" (7.23m x 4.57m)

Kitchen

10' 7" x 7' 0" (3.22m x 2.13m)



SOUL ESTATES

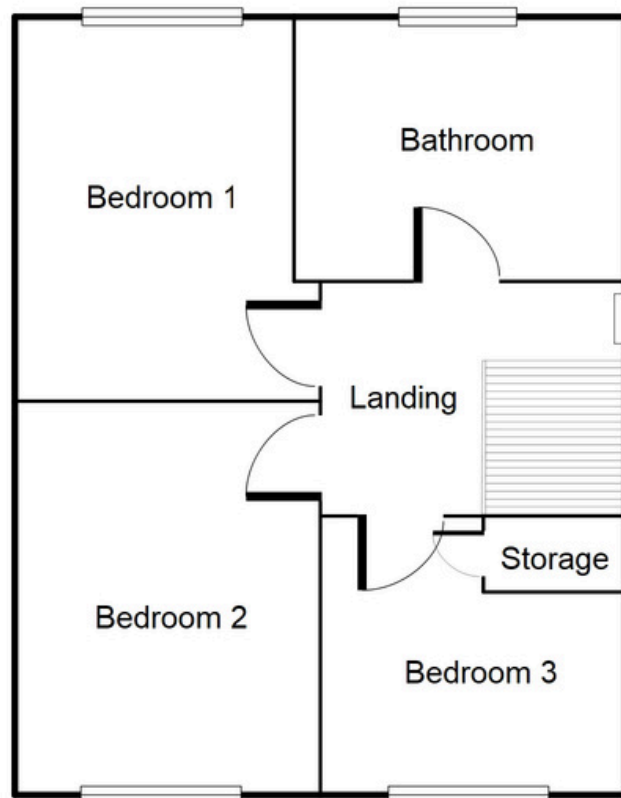
SALES & LETTINGS

TO LET - 3 BEDROOM HOUSE

Haines Close, Tipton, DY4

£1,250 PCM

First Floor



This floorplan is just an example, this is not to scale.
Please see description for exact room sizes.
(c) Soul Estates

First Floor Landing

8' 10" x 5' 10" (2.69m x 1.78m)

Bedroom 1

11' 10" x 9' 9" (3.60m x 2.97m)

Bedroom 2

11' 10" x 8' 4" (3.60m x 2.54m)

Bedroom 3

6' 6" x 6' 7" (1.98m x 2.01m)

Bathroom

5' 5" x 6' 4" (1.65m x 1.93m)