



75 Roman Way
Kettering, NN14 2QL



This four-bedroom detached home has an incredible amount to offer, occupying a fantastic-sized plot with off-road parking and an oversized garage.

A standout feature of the property is the substantial lounge extension, creating an impressive and spacious living area ideal for modern family life. With footings already in place, there is potential to extend above the lounge (subject to the necessary planning permissions), offering exciting future development opportunities.

The ground floor comprises an entrance porch, a welcoming and spacious hallway, and a convenient WC. The kitchen/dining room forms the heart of the home, providing excellent space for family living and entertaining, with further scope to open through to the separate dining room if desired.

Upstairs, the property offers four well-proportioned bedrooms, a family bathroom, and a separate WC.

Externally, the home sits on a generous plot with enormous potential for further extension (subject to planning) or for creating a beautifully landscaped private garden. The outdoor space provides the perfect setting for family enjoyment, entertaining, and relaxation, while offering a high degree of privacy.

A fantastic family home with huge potential – early viewing is highly recommended.

£325,000



4

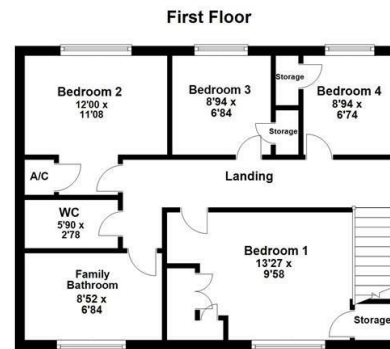
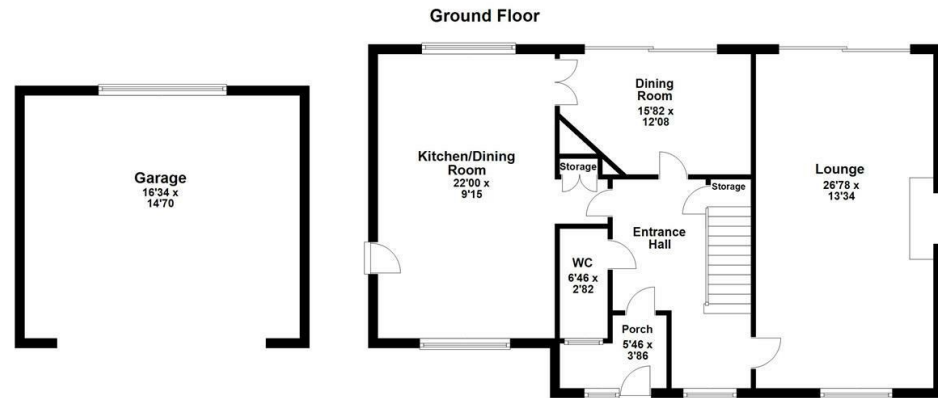


2



3





Energy Efficiency Rating

	Current	Potential
<i>Very energy efficient - lower running costs</i>		
(92 plus) A		
(81-91) B		
(69-80) C		
(55-68) D		
(39-54) E		
(21-38) F		
(1-20) G		
<i>Not energy efficient - higher running costs</i>		
England & Wales	EU Directive 2002/91/EC	





**Simpson
Ellson**

T: 01536 645960
E: rothwell@simpsonellson.co.uk



01536 645960
rothwell@simpsonellson.co.uk
<https://www.simpsonellson.co.uk>

32 High Street, Rothwell, Northants, NN14 6BQ