



Temple Yard, E2

£3,750 Per calendar month

A spacious two double bedroom, two bathroom house located in a private gated car-free mews. This property which is located off of Temple Street has a great size dual aspect reception and kitchen, two double bedrooms and two bathrooms. Available furnished or unfurnished.

The mews, which also benefits from secure covered bike storage, is ideally located for numerous amenities whilst the weekend markets of Columbia Road and Broadway Market are both moments away. Shoreditch and Liverpool Street are also within walking distance.

Features

- Two Bedroom
- Two Bathroom
- Gated Mews House
- Modern
- Dual Aspect
- Secure Covered Bike Storage

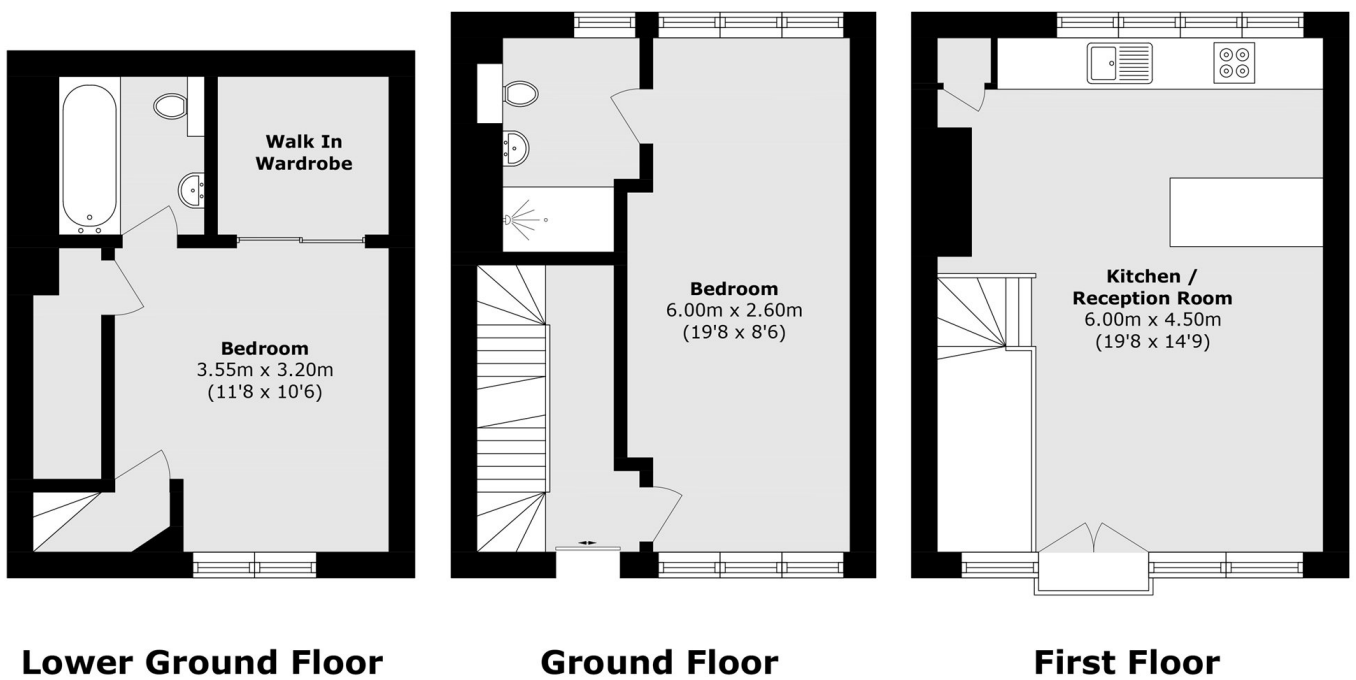


Temple Yard, E2

A spacious two double bedroom, two bathroom house located in a private gated car-free mews. This property which is located off of Temple Street has a great size dual aspect reception and kitchen, two double bedrooms and two bathrooms. Available furnished or unfurnished.



Temple Yard, London, E2



Total area (approx.): 75.3 sq. m (810.5 sq. ft)