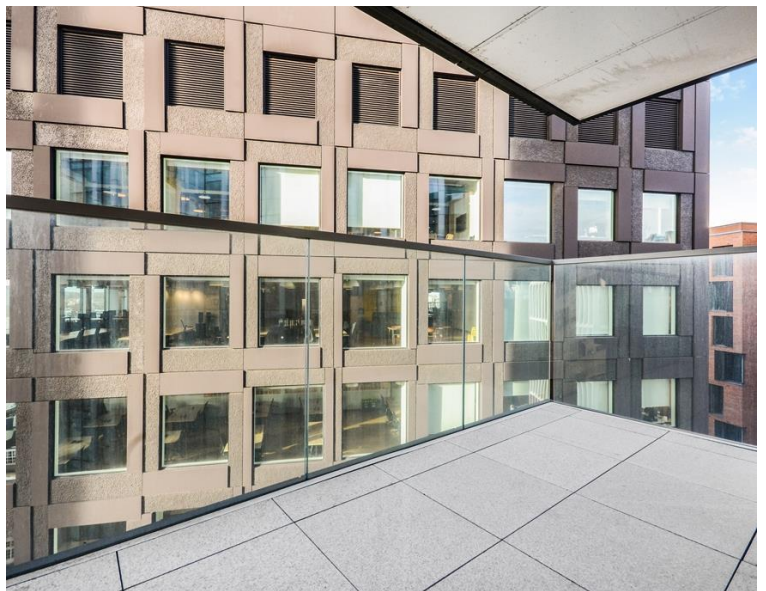


City Road, London EC1V

£750,000 Leasehold







Description

Set on the 10th floor, and extending to an impressive 773 sq ft of well-proportioned living and entertaining space, the apartment comprises a spacious reception area with fully fitted kitchen, large balcony with views towards the Olympic Park, 2 double bedrooms each with large fitted wardrobes, 2 luxury bathrooms with porcelain finish, wood flooring and comfort cooling / heating.

The Atlas Building is next to Old Street station (0.1 mile) and ideally situated for the City, Hoxton, Shoreditch and Angel. The development offers top of the range amenities which includes pool, spa, gymnasium, private cinema room, resident's only business lounge and 24 hour concierge.

Leasehold 988 years (exp. 31/12/3013)
Ground Rent: Approx. £600 pa
Service Charge: Approx. £9,863.48 pa
Council Tax Band: F
EPC Rating: B

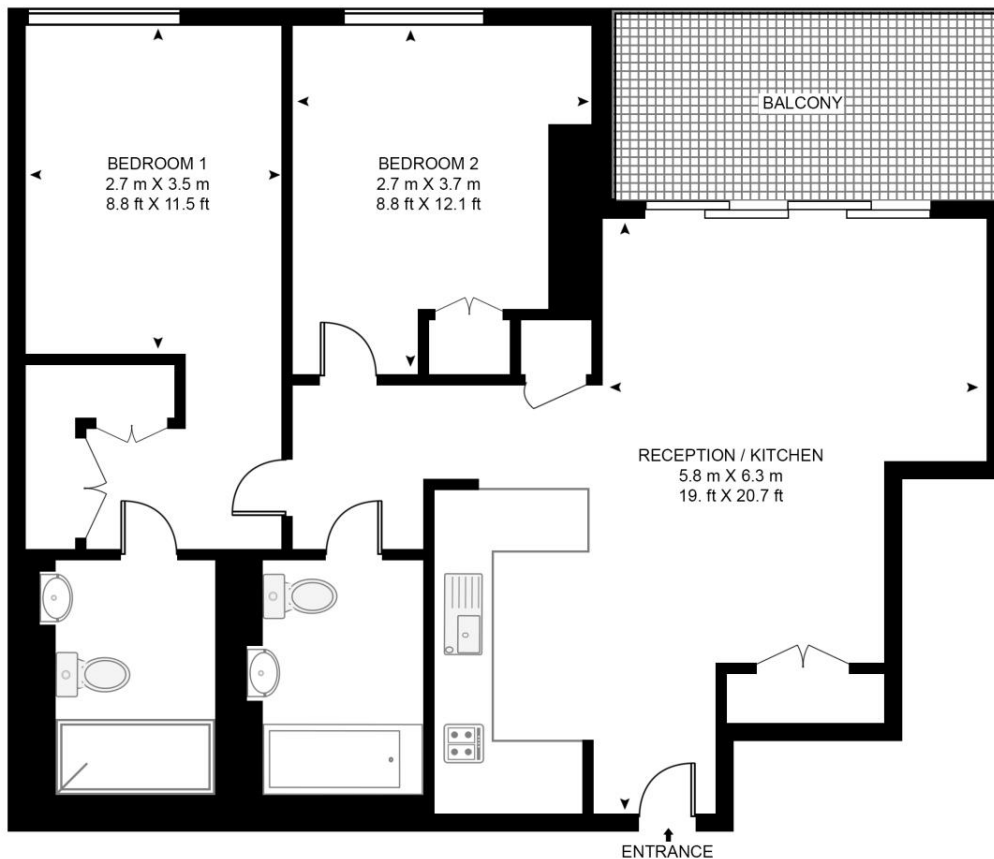
- 2 Bedrooms
- 2 Bathrooms
- Good sized balcony
- On-site leisure facilities including pool, spa and cinema
- 24 hour concierge
- 0.1 miles from Old Street Station
- Approx. 773 sq ft / 71.8 sq m

Floorplan

773 sq ft | 72 sq m

ATLAS BUILDING, 145 CITY ROAD

APPROXIMATE GROSS INTERNAL FLOOR AREA 773 SQ.FT (71.8 SQ.M)



TENTH FLOOR

HDVA

This floor plan has been defined by the RICS Code of Measurement. This floor plan and all others are for approximate representative purposes only and upon usage is agreed to as such by the client.

WWW: hdvirtualart.com | TEL: 0203.974.1567 | EMAIL: info@hdvirtualart.com

City
25 Walbrook The Walbrook
Building,
London EC4N 8AF
+4420 7337 4000

Urban living, your way.

jll.co.uk/residential

© 2019 Jones Lang LaSalle IP, Inc. All rights reserved. All information contained herein is from sources deemed reliable; however, no representation or warranty is made to the accuracy thereof.

