



9, Fordwich Rise, Hertford

SG14 2BL

Guide Price £1,200,000



[stevenoates.com](http://stevenoates.com)



## 9 Fordwich Rise, Hertford, Hertfordshire, SG14 2BL

An extended and stylishly finished 4 bedroom 1930's detached family home located within a highly sought after residential road. Arranged over two floors, the accommodation comprises of an entrance porch and hallway, cloakroom, comfy living room, spacious family kitchen/breakfast room with bi-folding doors to garden and vaulted roof and a large utility room. The first floor comprises of four good size bedrooms, with an en-suite shower room to the principal bedroom, and a modern family bathroom. Externally, there is off street parking for several vehicles and a mature rear garden.

Located within a highly sought after residential road, the property is ideally positioned for commuters. Hertford North mainline station is only a short distance away (0.4 miles) which provides fast and regular services to London's Moorgate and Finsbury Park. Hertford town centre is also only 1 mile away offering an excellent choice of restaurants, coffee shops and boutique shops along with an additional mainline train station, Hertford East.



70 Fore Street, Hertford, Hertfordshire, SG14 1BY



70 Fore Street, Hertford, Hertfordshire, SG14 1BY



70 Fore Street, Hertford, Hertfordshire, SG14 1BY

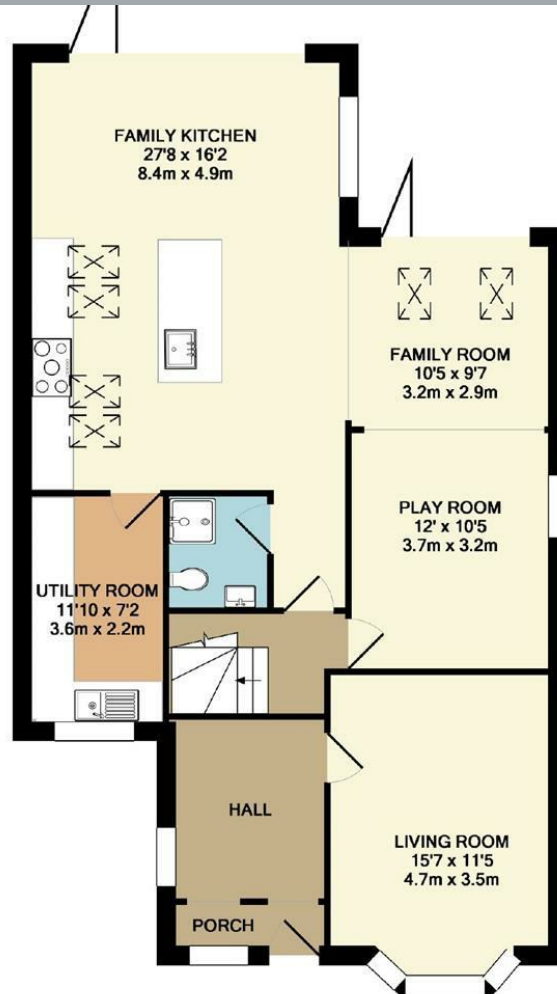




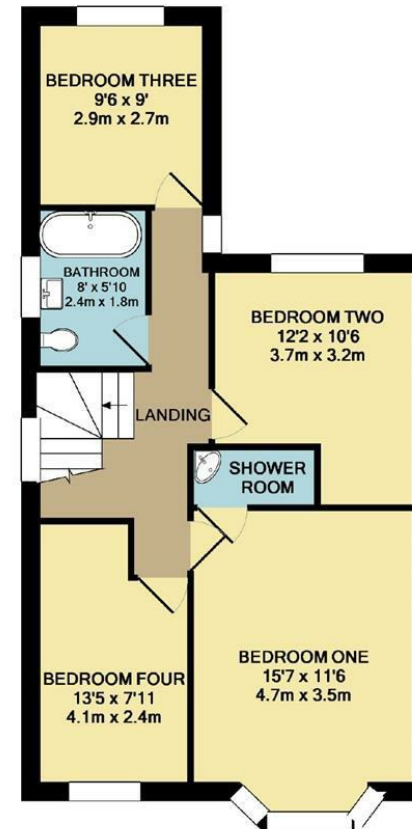
70 Fore Street, Hertford, Hertfordshire, SG14 1BY



70 Fore Street, Hertford, Hertfordshire, SG14 1BY



GROUND FLOOR  
APPROX. FLOOR  
AREA 1026 SQ.FT.  
(95.3 SQ.M.)



1ST FLOOR  
APPROX. FLOOR  
AREA 629 SQ.FT.  
(58.4 SQ.M.)

These particulars, whilst believed to be accurate are set out as a general outline only for guidance and do not constitute any part of an offer or contract. Intending purchasers should not rely on them as statements of representation of fact, but must satisfy themselves by inspection or otherwise as to their accuracy. No person in this firm's employment has the authority to make or give any representation or warranty in respect of the property.



[stevenoates.com](http://stevenoates.com)