



## 26 Leathermarket Court London

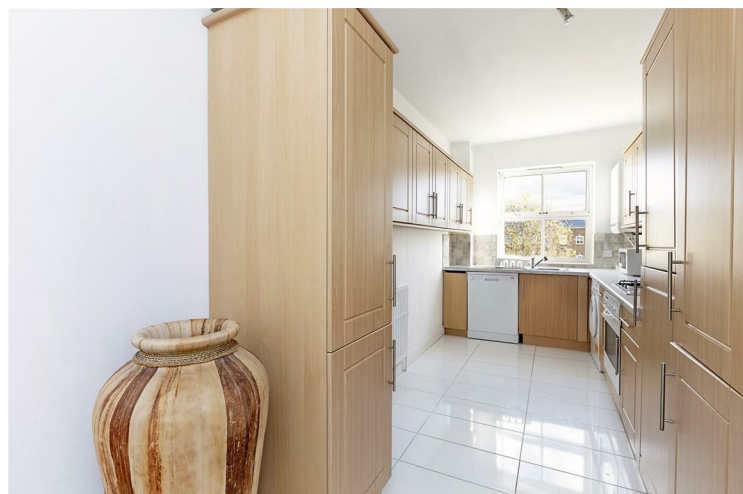
£2,500 PCM

A top floor two bedroom two bathroom apartment within Leathermarket Court SE1. The property comprises two double bedrooms, two newly refurbished bathrooms (one en-suite shower room), a spacious reception room with a Juliette balcony and a separate eat-in kitchen. Secure gated parking available (subject to offer and terms). Offered furnished.

Call the lettings department to arrange a viewing or for more information - 020 7015 1363



• Two Bedroom Apartment • Leathemarket Court • Top Floor • Two Bathrooms • Gated Development • Furnished







Energy Efficiency Rating		
	Current	Potential
Very energy efficient - lower running costs		
(92 plus) A		
(81-91) B		
(69-80) C	72	77
(55-68) D		
(39-54) E		
(21-38) F		
(1-20) G		
Not energy efficient - higher running costs		
England & Wales	EU Directive 2002/91/EC	

Agents Note: Whilst every care has been taken to prepare these particulars, they are for guidance purposes only. All measurements are approximate and are for general guidance purposes only and whilst every care has been taken to ensure their accuracy, they should not be relied upon and potential buyers/tenants are advised to recheck the measurements

Borough Lettings  
230 Borough High Street  
London  
SE1 1JX

020 7015 1360  
enquiries@leonardleese.com  
www.leonardleese.com

